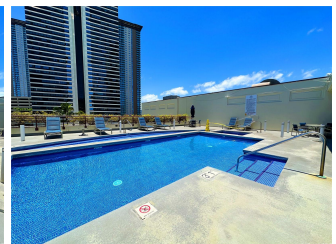
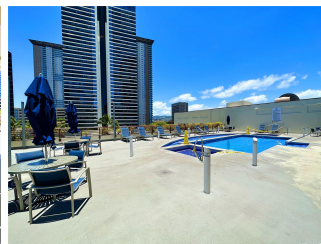
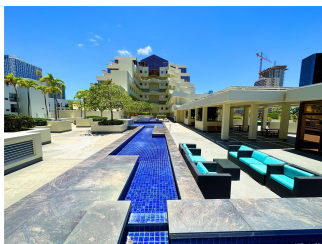
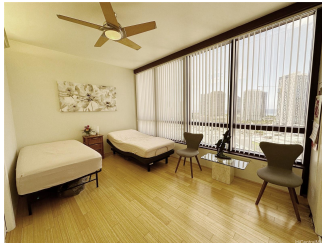


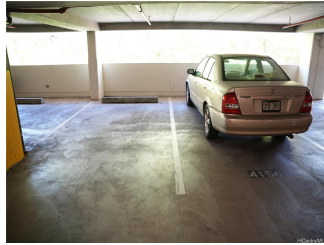
Imperial Plaza 725 Kapiolani Boulevard Unit 2002, Honolulu 96813 * Imperial Plaza *

\$689,000 * Originally \$729,000

Beds: 2	MLS#: 202316882, FS	Year Built: 1991
Bath: 2/0	Status: Active Under Contract	Remodeled: 2018
Living Sq. Ft.: 911	List Date & DOM: 07-20-2023 & 229	Total Parking: 2
Land Sq. Ft.: 110,294	Condition: Excellent, Above Average	Assessed Value
Lanai Sq. Ft.: 94	Frontage:	Building: \$491,800
Sq. Ft. Other: 0	Tax/Year: \$130/2023	Land: \$93,900
Total Sq. Ft. 1,005	Neighborhood: Kakaako	Total: \$585,700
Maint./Assoc. \$1,211 / \$0	Flood Zone : Zone X - Tool	Stories / CPR: / No
Parking: Covered - 2, Garage, Guest	Frontage:	
Zoning : Kak - Kakaako Community Development Project	View: City, Ocean	

Public Remarks: Excellent condition 20th floor unit in Imperial Plaza! The unit features 2 bedrooms, 2 bathrooms, and 2 assigned covered parking stalls side by side and storage. The unit also boasts large windows in both bedrooms along with living room to bring in tons of natural lighting and has direct access to your own private lanai. Imperial Plaza is located in the heart of Kakaako in close proximity to restaurants, shops, salons, shopping centers, Ward area along with Ala Moana! Unit #2002 has access to direct breathtaking views of the ocean side along with the city for you to enjoy. Imperial Plaza offers amenities such as secured entry, resident manager, security, pool on property along with outside recreation area just to name a few. Don't wait, schedule your viewing today to come take a look at this beautiful unit! Maintenance fee is \$1,210.93, \$78.7 special assessment, and \$40.29 for Hawaiian Telcom Bulk Cable TV. Total \$1,329.92 **Sale Conditions:** None **Schools:** [Royal, Keelikolani, Mckinley](#) * [Request Showing, Photos, History, Maps, Deed, Watch List, Tax Info](#)





Address	Price	Bd & Bth	Living / Avg.	Land Avg.	Lanai	Occ.	FL	DOM
725 Kapiolani Boulevard 2002	\$689,000	2 & 2/0	911 \$756	110,294 \$6	94	65%	20	229

Address	Tax Maint. Ass.	Assessed Land	Assessed Building	Assessed Total	Ratio	Year & Remodeled
725 Kapiolani Boulevard 2002	\$130 \$1,211 \$0	\$93,900	\$491,800	\$585,700	118%	1991 & 2018

[725 Kapiolani Boulevard 2002](#) - MLS#: [202316882](#) - Original price was \$729,000 - Excellent condition 20th floor unit in Imperial Plaza! The unit features 2 bedrooms, 2 bathrooms, and 2 assigned covered parking stalls side by side and storage. The unit also boasts large windows in both bedrooms along with living room to bring in tons of natural lighting and has direct access to your own private lanai. Imperial Plaza is located in the heart of Kakaako in close proximity to restaurants, shops, salons, shopping centers, Ward area along with Ala Moana! Unit #2002 has access to direct breathtaking views of the ocean side along with the city for you to enjoy. Imperial Plaza offers amenities such as secured entry, resident manager, security, pool on property along with outside recreation area just to name a few. Don't wait, schedule your viewing today to come take a look at this beautiful unit! Maintenance fee is \$1,210.93, \$78.7 special assessment, and \$40.29 for Hawaiian Telcom Bulk Cable TV. Total \$1,329.92 **Region:** Metro **Neighborhood:** Kakaako **Condition:** Excellent, Above Average **Parking:** Covered - 2, Garage, Guest **Total Parking:** 2 **View:** City, Ocean **Frontage:** **Pool:** **Zoning:** Kak - Kakaako Community Development Project **Sale Conditions:** None **Schools:** [Royal](#), [Keelikolani](#), [Mckinley](#) * [Request Showing](#), [Photos](#), [History](#), [Maps](#), [Deed](#), [Watch List](#), [Tax Info](#)

DOM = Days on Market, Occ. = Occupancy, FL = Floor Number