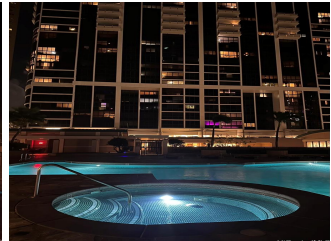
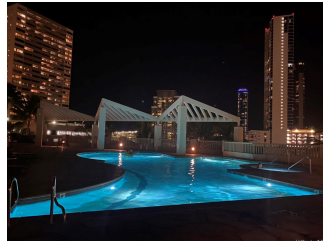
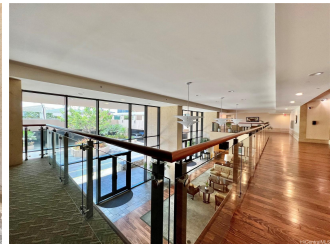
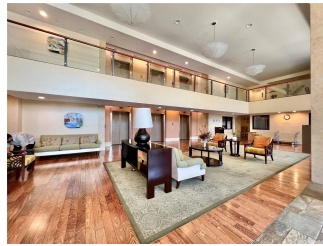


Keola Lai 600 Queen Street Unit 1407, Honolulu 96813 * Keola Lai * \$835,000 * Originally \$850,000

Beds: 2	MLS#: <u>202319937</u>, FS	Year Built: 2008
Bath: 2/0	Status: Active	Remodeled:
Living Sq. Ft.: 1,045	List Date & DOM: 08-28-2023 & 255	Total Parking: 2
Land Sq. Ft.: 0	Condition: Excellent	Assessed Value
Lanai Sq. Ft.: 0	Frontage:	Building: \$744,300
Sq. Ft. Other: 0	Tax/Year: \$214/2023	Land: \$88,100
Total Sq. Ft. 1,045	Neighborhood: Kakaako	Total: \$832,400
Maint./Assoc. \$883 / \$0	Flood Zone : Zone X - Tool	Stories / CPR: 21+ / No
Parking: Assigned, Covered - 2, Guest	Frontage:	
Zoning : KA - State jurisdiction, refer	View: City, Mountain, Ocean, Sunrise	

Public Remarks: Beautiful, good as new, 2 bed, 2 bath, 2 spacious non-tandem parking stalls. Floor to ceiling windows in livingroom and primary bedroom, cooler side of the building. Enjoy city views, partial mountain and ocean views too. Spacious living room and kitchen, real wood cabinets, obscured glass features, granite counters, new stainless steel stove, large pantry closet, breakfast bar, space for full size dining! Preferred model, primary bedroom privately located at the end of long hall is quite spacious... room for kingsized furniture and desk or sitting area. Large primary bath, long double vanity, closet. Newer full size laundry set! Luxury, pet friendly condo, Energy Star rated, windows stylishly tinted filtering direct sunlight. Windows open wide for indoor outdoor feel. Keola Lai has phenomenal amenities: large heated pool, whirlpool, outdoor kitchen, BBQ and eating area, fitness center, elegant spaces, 24hr security, guest parking, EV chargers, car wash area. Exquisite building in Kakaako, walk to shop and dine- a classy condo that can quickly become "home" or home away. Fee of approximately \$180/mo covers portion of shared common area electric. Less than most other condo fees. **Sale Conditions:** None **Schools:** , , * [Request Showing](#), [Photos](#), [History](#), [Maps](#), [Deed](#), [Watch List](#), [Tax Info](#)





Address	Price	Bd & Bth	Living / Avg.	Land Avg.	Lanai	Occ.	FL	DOM
600 Queen Street 1407	\$835,000	2 & 2/0	1,045 \$799	0 \$inf	0	60%	14	255

Address	Tax Maint. Ass.	Assessed Land	Assessed Building	Assessed Total	Ratio	Year & Remodeled
600 Queen Street 1407	\$214 \$883 \$0	\$88,100	\$744,300	\$832,400	100%	2008 & NA

[600 Queen Street 1407](#) - MLS#: [202319937](#) - Original price was \$850,000 - Beautiful, good as new, 2 bed, 2 bath, 2 spacious non-tandem parking stalls. Floor to ceiling windows in livingroom and primary bedroom, cooler side of the building. Enjoy city views, partial mountain and ocean views too. Spacious living room and kitchen, real wood cabinets, obscured glass features, granite counters, new stainless steel stove, large pantry closet, breakfast bar, space for full size dining! Preferred model, primary bedroom privately located at the end of long hall is quite spacious... room for kingsized furniture and desk or sitting area. Large primary bath, long double vanity, closet. Newer full size laundry set! Luxury, pet friendly condo, Energy Star rated, windows stylishly tinted filtering direct sunlight. Windows open wide for indoor outdoor feel. Keola Lai has phenomenal amenities: large heated pool, whirlpool, outdoor kitchen, BBQ and eating area, fitness center, elegant spaces, 24hr security, guest parking, EV chargers, car wash area. Exquisite building in Kakaako, walk to shop and dine- a classy condo that can quickly become "home" or home away. Fee of approximately \$180/mo covers portion of shared common area electric. Less than most other condo fees. **Region:** Metro **Neighborhood:** Kakaako **Condition:** Excellent **Parking:** Assigned, Covered - 2, Guest **Total Parking:** 2 **View:** City, Mountain, Ocean, Sunrise **Frontage:** **Pool:** **Zoning:** KA - State jurisdiction, refer **Sale Conditions:** None **Schools:** , , * [Request Showing](#), [Photos](#), [History](#), [Maps](#), [Deed](#), [Watch List](#), [Tax Info](#)

DOM = Days on Market, Occ. = Occupancy, FL = Floor Number