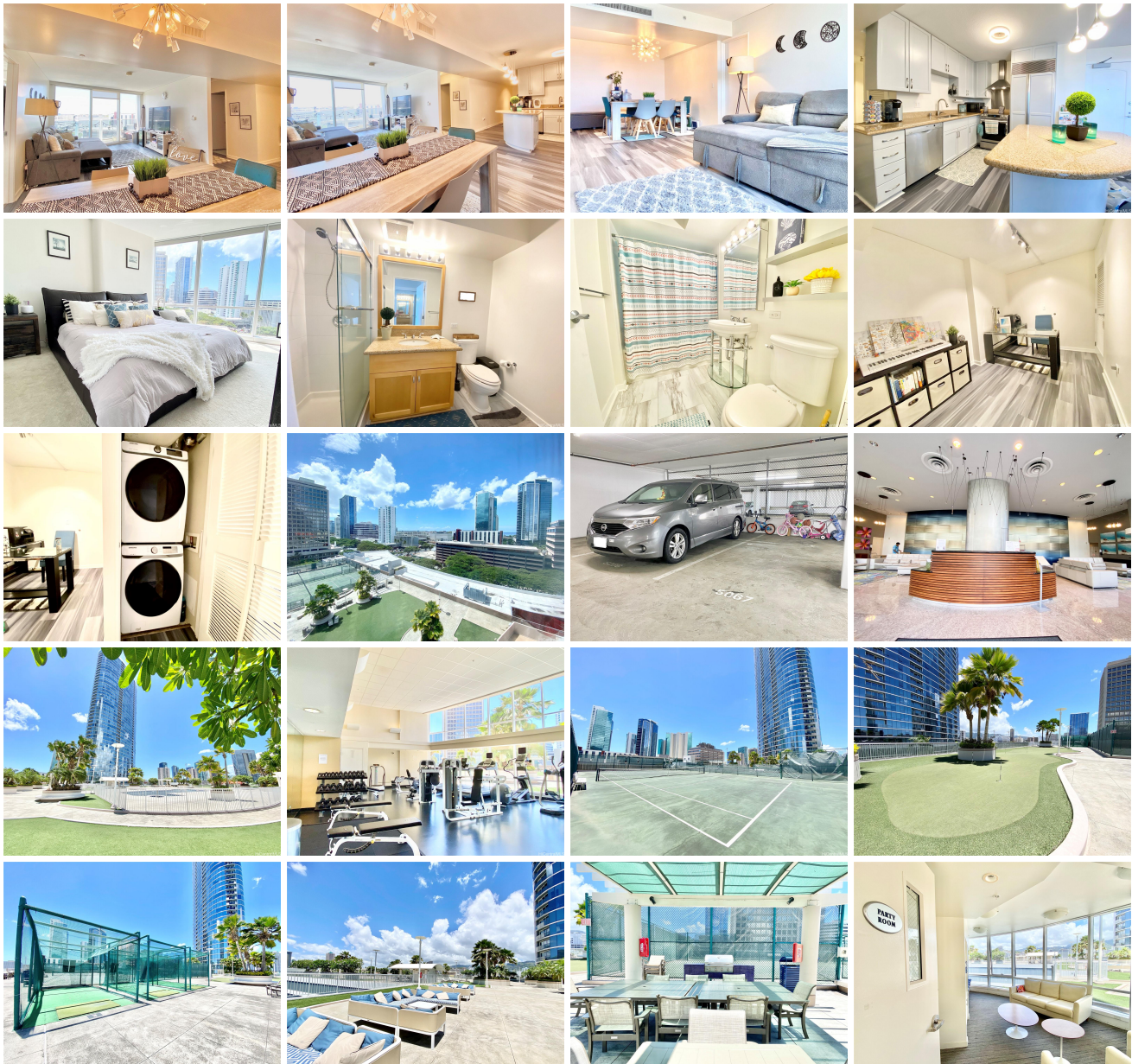


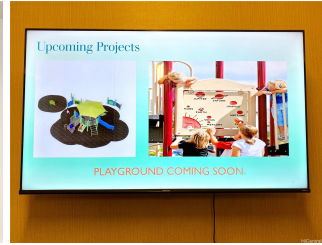
Moana Pacific 1288 Kapiolani Boulevard Unit I-1204, Honolulu 96814 * Moana Pacific *

\$898,000 * Originally \$928,000

Beds: 2	MLS#: 202320050, FS	Year Built: 2007
Bath: 2/0	Status: Active	Remodeled: 2021
Living Sq. Ft.: 1,113	List Date & DOM: 09-01-2023 & 251	Total Parking: 2
Land Sq. Ft.: 0	Condition: Above Average	Assessed Value
Lanai Sq. Ft.: 44	Frontage:	Building: \$920,200
Sq. Ft. Other: 0	Tax/Year: \$288/2023	Land: \$68,800
Total Sq. Ft. 1,157	Neighborhood: Kakaako	Total: \$989,000
Maint./Assoc. \$1,138 / \$0	Flood Zone : Zone X - Tool	Stories / CPR: 21+ / No
Parking: Covered - 2, Guest	Frontage:	
Zoning : Kak - Kakaako Community Development Project	View: City, Diamond Head, Ocean	

Public Remarks: Come home to this spacious 2 bed / 2 bath with a den at the iconic Moana Pacific in Honolulu, Hawaii. Unit includes 2 side by side parking stalls. Unit's floors were upgraded in 2021. City, ocean, and diamond head views from this 12th floor unit. Some of the features of appliances are a Bosch dishwasher, Samsung washer/dryer, and Subzero refrigerator. Water heater replaced in 2022. Moana Pacific has excellent amenities such as a theater room, tennis courts, putting green, golf cage, BBQ recreation area, pool/hot tub(under repair), and playground. It's also within 10 minutes walking distance to Ala Moana Center, Ward Village, Walmart, Sam's Club, Target, Whole foods, and Foodland. Pet friendly building (up to two, 25lbs limit, and building approval). Fire sprinklers in unit. Concierge in lobby and 24 hours security staff. **Sale Conditions:** None
Schools: [Kaahumanu](#), [Stevenson](#), [Mckinley](#) * [Request Showing](#), [Photos](#), [History](#), [Maps](#), [Deed](#), [Watch List](#), [Tax Info](#)





Address	Price	Bd & Bth	Living / Avg.	Land Avg.	Lanai	Occ.	FL	DOM
1288 Kapiolani Boulevard I-1204	\$898,000	2 & 2/0	1,113 \$807	0 \$inf	44	48%	12	251

Address	Tax Maint. Ass.	Assessed Land	Assessed Building	Assessed Total	Ratio	Year & Remodeled
1288 Kapiolani Boulevard I-1204	\$288 \$1,138 \$0	\$68,800	\$920,200	\$989,000	91%	2007 & 2021

[1288 Kapiolani Boulevard I-1204](#) - MLS#: [202320050](#) - Original price was \$928,000 - Come home to this spacious 2 bed / 2 bath with a den at the iconic Moana Pacific in Honolulu, Hawaii. Unit includes 2 side by side parking stalls. Unit's floors were upgraded in 2021. City, ocean, and diamond head views from this 12th floor unit. Some of the features of appliances are a Bosch dishwasher, Samsung washer/dryer, and Subzero refrigerator. Water heater replaced in 2022. Moana Pacific has excellent amenities such as a theater room, tennis courts, putting green, golf cage, BBQ recreation area, pool/hot tub(under repair), and playground. It's also within 10 minutes walking distance to Ala Moana Center, Ward Village, Walmart, Sam's Club, Target, Whole foods, and Foodland. Pet friendly building (up to two, 25lbs limit, and building approval). Fire sprinklers in unit. Concierge in lobby and 24 hours security staff. **Region:** Metro **Neighborhood:** Kakaako **Condition:** Above Average **Parking:** Covered - 2, Guest **Total Parking:** 2 **View:** City, Diamond Head, Ocean **Frontage:** Pool: **Zoning:** Kak - Kakaako Community Development Project **Sale Conditions:** None **Schools:** [Kaahumanu](#), [Stevenson](#), [Mckinley](#) * [Request Showing](#), [Photos](#), [History](#), [Maps](#), [Deed](#), [Watch List](#), [Tax Info](#)

DOM = Days on Market, Occ. = Occupancy, FL = Floor Number