

Moana Pacific 1296 Kapiolani Boulevard Unit 1208, Honolulu 96814 * Moana Pacific *

\$899,000 * Originally \$920,000

Beds: **3**

MLS#: **202321196, FS**

Year Built: **2007**

Bath: **2/0**

Status: **Active Under Contract**

Remodeled:

Living Sq. Ft.: **1,206**

List Date & DOM: **10-16-2023 & 171**

Total Parking: **2**

Land Sq. Ft.: **0**

Condition: **Above Average**

[Assessed Value](#)

Lanai Sq. Ft.: **0**

Frontage:

Building: **\$956,500**

Sq. Ft. Other: **0**

Tax/Year: **\$266/2022**

Land: **\$74,500**

Total Sq. Ft. **1,206**

Neighborhood: **Kakaako**

Total: **\$1,031,000**

Maint./Assoc. **\$1,314 / \$0**

[Flood Zone](#): **Zone AE - Tool**

Stories / CPR: **One / No**

Parking: **Assigned, Covered - 2, Guest, Secured Entry, Street**

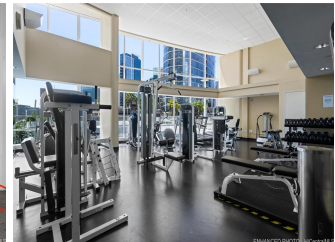
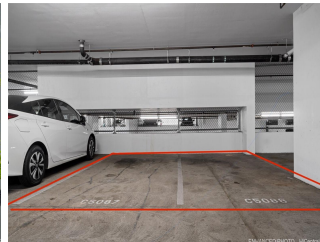
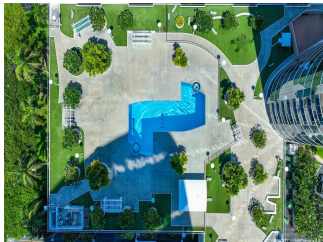
Frontage:

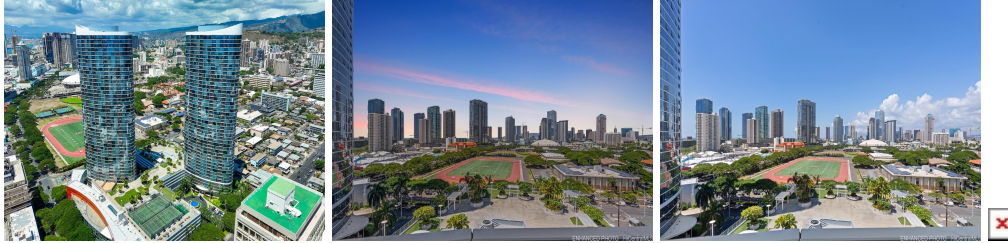
[Zoning](#): **Kak - Kakaako Community Development Project**

View: **City, Sunset**

Public Remarks: END-UNIT. LOCATION. LUXURY. Located in the highly desired Kakaako neighborhood of Honolulu, Moana Pacific, is a luxurious condominium complex spanning 2 towers. In the East tower, this end-unit, 3-bedroom, 2 bathroom unit offers breathtaking cityscape views looking over to the gorgeous sunset at night. Floor to ceiling windows in the open layout gives the unit lots of natural light. With central air conditioning to keep the temperature cool, you can relax at ease. The unit comes with 2 side-by-side parking stalls, in close proximity to the elevator. The complex boasts a generous amount of amenities from a fitness center, swimming pool, jacuzzi, tennis courts, driving nets, putting green, bbq areas, theater, secured entrances monitored with 24-hour security, and ample amount of guest parking. Also, nearing shopping centers, entertainment venues, and amazing restaurants, the complex is great for an urban-lifestyle. **Sale Conditions:** None

Schools: , , * [Request Showing](#), [Photos](#), [History](#), [Maps](#), [Deed](#), [Watch List](#), [Tax Info](#)





Address	Price	Bd & Bth	Living / Avg.	Land Avg.	Lanai	Occ.	FL	DOM
1296 Kapiolani Boulevard 1208	\$899,000	3 & 2/0	1,206 \$745	0 \$inf	0	45%	12	171

Address	Tax Maint. Ass.	Assessed Land	Assessed Building	Assessed Total	Ratio	Year & Remodeled
1296 Kapiolani Boulevard 1208	\$266 \$1,314 \$0	\$74,500	\$956,500	\$1,031,000	87%	2007 & NA

[1296 Kapiolani Boulevard 1208](#) - MLS#: [202321196](#) - Original price was \$920,000 - END-UNIT. LOCATION. LUXURY. Located in the highly desired Kakaako neighborhood of Honolulu, Moana Pacific, is a luxurious condominium complex spanning 2 towers. In the East tower, this end-unit, 3-bedroom, 2 bathroom unit offers breathtaking cityscape views looking over to the gorgeous sunset at night. Floor to ceiling windows in the open layout gives the unit lots of natural light. With central air conditioning to keep the temperature cool, you can relax at ease. The unit comes with 2 side-by-side parking stalls, in close proximity to the elevator. The complex boasts a generous amount of amenities from a fitness center, swimming pool, jacuzzi, tennis courts, driving nets, putting green, bbq areas, theater, secured entrances monitored with 24-hour security, and ample amount of guest parking. Also, nearing shopping centers, entertainment venues, and amazing restaurants, the complex is great for an urban-lifestyle. **Region:** Metro **Neighborhood:** Kakaako **Condition:** Above Average **Parking:** Assigned, Covered - 2, Guest, Secured Entry, Street **Total Parking:** 2 **View:** City, Sunset **Frontage:** Pool: **Zoning:** Kak - Kakaako Community Development Project **Sale Conditions:** None **Schools:** , , * [Request Showing](#), [Photos](#), [History](#), [Maps](#), [Deed](#), [Watch List](#), [Tax Info](#)

DOM = Days on Market, Occ. = Occupancy, FL = Floor Number