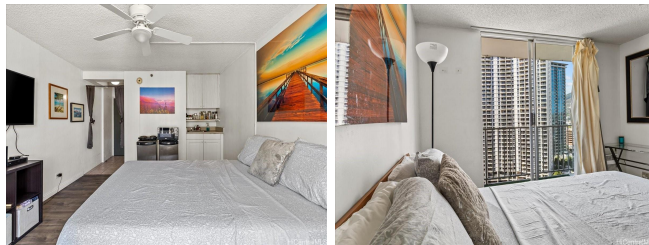


Inn On The Park 1920 Ala Moana Boulevard Unit 1814, Honolulu 96815 * Inn On The Park ***\$89,000 * Originally \$115,000**

| | | |
|---|--|----------------------------------|
| Sold Price: \$89,000 | Sold Date: 05-10-2024 | Sold Ratio: 100% |
| Beds: 0 | MLS#: 202321210, LH | Year Built: 1978 |
| Bath: 1/0 | Status: Sold | Remodeled: |
| Living Sq. Ft.: 299 | List Date & DOM: 09-15-2023 & 210 | Total Parking: 0 |
| Land Sq. Ft.: 0 | Condition: Average | Assessed Value |
| Lanai Sq. Ft.: 41 | Frontage: | Building: \$172,100 |
| Sq. Ft. Other: 0 | Tax/Year: \$67/2023 | Land: \$54,400 |
| Total Sq. Ft. 340 | Neighborhood: Waikiki | Total: \$226,500 |
| Maint./Assoc. \$512 / \$0 | Flood Zone : Zone AE - Tool | Stories / CPR: 15-20 / No |
| Parking: None | Frontage: | |
| Zoning : X2 - Apartment Precinct | View: City, Marina/Canal, Mountain, Ocean | |

Public Remarks: New flooring and vanity has been installed! This high floor corner studio unit situated on the 18th floor, offers an expansive living space that leads out to a stunning view. A gem nestled in a prime location that provides easy access to area's such as beaches, popular restaurants, bustling shops, convenient bus lines and the famous Ala Moana Shopping Center. The Inn on the Park offers low maintenance fees that includes electricity, an excellent location, and a range of features like the beautiful pool, remarkable recreation space, barbecue area, and laundry. Schedule viewings easily. Don't miss the chance on this remarkable property. **Sale Conditions:** None **Schools:** , , * [Request Showing](#), [Photos](#), [History](#), [Maps](#), [Deed](#), [Watch List](#), [Tax Info](#)



| Address | Price | Bd & Bth | Living / Avg. | Land Avg. | Lanai | Occ. | FL | DOM |
|---|--------------------|----------|---------------|-------------|-------|------|----|-----|
| 1920 Ala Moana Boulevard 1814 | \$89,000 LH | 0 & 1/0 | 299 \$298 | 0 \$inf | 41 | 10% | 18 | 210 |

| Address | Tax Maint. Ass. | Assessed Land | Assessed Building | Assessed Total | Ratio | Year & Remodeled |
|---|---------------------|---------------|-------------------|----------------|-------|------------------|
| 1920 Ala Moana Boulevard 1814 | \$67 \$512 \$0 | \$54,400 | \$172,100 | \$226,500 | 39% | 1978 & NA |

| Address | Sold Price | Sold Date | Sold Ratio | Original Ratio | Sold Terms |
|---|------------|------------|------------|----------------|------------|
| 1920 Ala Moana Boulevard 1814 | \$89,000 | 05-10-2024 | 100% | 77% | Cash |

[1920 Ala Moana Boulevard 1814](#) - MLS#: [202321210](#) - Original price was \$115,000 - New flooring and vanity has been installed! This high floor corner studio unit situated on the 18th floor, offers an expansive living space that leads out to a stunning view. A gem nestled in a prime location that provides easy access to area's such as beaches, popular restaurants, bustling shops, convenient bus lines and the famous Ala Moana Shopping Center. The Inn on the Park offers low maintenance fees that includes electricity, an excellent location, and a range of features like the beautiful pool, remarkable recreation space, barbecue area, and laundry. Schedule viewings easily. Don't miss the chance on this remarkable property. **Region:** Metro **Neighborhood:** Waikiki **Condition:** Average **Parking:** None **Total Parking:** 0 **View:** City, Marina/Canal, Mountain, Ocean **Frontage:** Pool: **Zoning:** X2 - Apartment Precinct **Sale Conditions:** None **Schools:** , , * [Request Showing](#), [Photos](#), [History](#), [Maps](#), [Deed](#), [Watch List](#), [Tax Info](#)

DOM = Days on Market, Occ. = Occupancy, FL = Floor Number