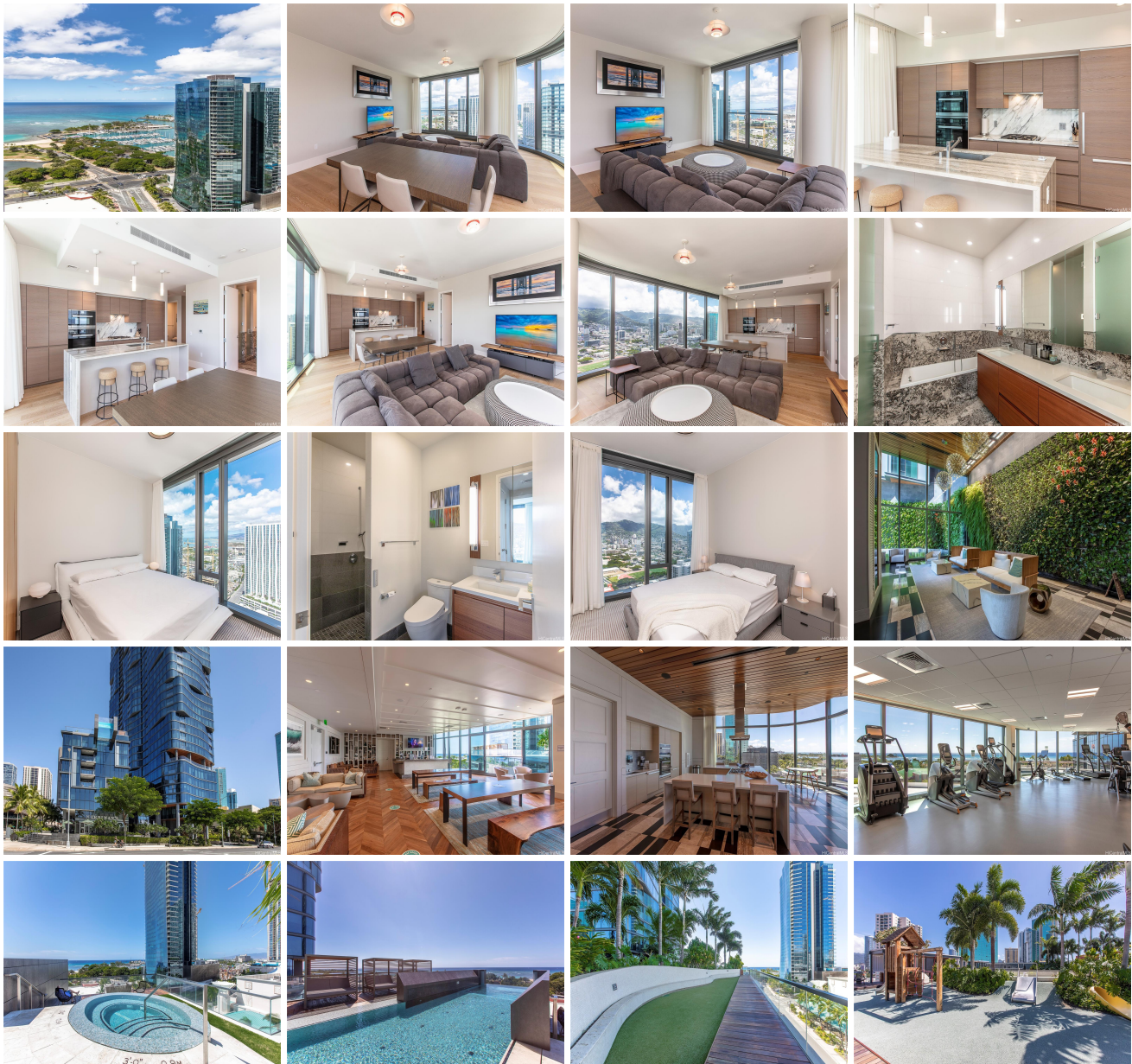


Anaha - 1108 Auahi 1108 Auahi Street Unit PH3407, Honolulu 96814 * Anaha - 1108 Auahi

*** \$1,999,999 * Originally \$2,150,000**

Beds: 2	MLS#: <u>202321329</u>, FS	Year Built: 2017
Bath: 2/0	Status: Active	Remodeled:
Living Sq. Ft.: 1,349	List Date & DOM: 09-20-2023 & 232	Total Parking: 2
Land Sq. Ft.: 0	Condition: Excellent	Assessed Value
Lanai Sq. Ft.: 0	Frontage:	Building: \$1,639,300
Sq. Ft. Other: 0	Tax/Year: \$1,004/2023	Land: \$66,800
Total Sq. Ft. 1,349	Neighborhood: Kakaako	Total: \$1,706,100
Maint./Assoc. \$2,152 / \$0	Flood Zone : Zone AE - Tool	Stories / CPR: 21+ / No
Parking: Assigned, Covered - 2, Guest	Frontage:	
Zoning : Kak - Kakaako Community Development Project	View: City, Marina/Canal, Mountain, Ocean, Sunset	

Public Remarks: Luxurious, immaculate 2 bedroom, 2 bath wrap-around corner end unit with sweeping ocean-to-mountain views! This is a special unit on the Penthouse floor with 10-foot high ceilings and a Penthouse kitchen design, motorized window coverings, built-in bathtub and shower combo, and Toto Neorest toilet upgrades. Wide-open floor plan, premium hardwood flooring, Miele appliances, Gas Cooktop, wine fridge, Dornbracht plumbing fixtures. Primary suite has a huge walk-in closet. This unit comes with Italian designer furniture. Over an acre of amazing amenities that include fitness center, yoga studio, sauna, golf simulator, chef's kitchen, private dining rooms, theater, library, pool, dog park, volleyball, tennis, guest suites & much more! Located in the heart of Kakaako and Ward Village with walking distance to world class dining, shopping, theatre, and Ala Moana beach park. **Sale Conditions:** None **Schools:** , , * [Request Showing](#), [Photos](#), [History](#), [Maps](#), [Deed](#), [Watch List](#), [Tax Info](#)





Address	Price	Bd & Bth	Living / Avg.	Land Avg.	Lanai	Occ.	FL	DOM
1108 Auahi Street PH3407	\$1,999,999	2 & 2/0	1,349 \$1,483	0 \$inf	0	64%	34	232

Address	Tax Maint. Ass.	Assessed Land	Assessed Building	Assessed Total	Ratio	Year & Remodeled
1108 Auahi Street PH3407	\$1,004 \$2,152 \$0	\$66,800	\$1,639,300	\$1,706,100	117%	2017 & NA

[1108 Auahi Street PH3407](#) - MLS#: [202321329](#) - Original price was \$2,150,000 - Luxurious, immaculate 2 bedroom, 2 bath wrap-around corner end unit with sweeping ocean-to-mountain views! This is a special unit on the Penthouse floor with 10-foot high ceilings and a Penthouse kitchen design, motorized window coverings, built-in bathtub and shower combo, and Toto Neorest toilet upgrades. Wide-open floor plan, premium hardwood flooring, Miele appliances, Gas Cooktop, wine fridge, Dornbracht plumbing fixtures. Primary suite has a huge walk-in closet. This unit comes with Italian designer furniture. Over an acre of amazing amenities that include fitness center, yoga studio, sauna, golf simulator, chef's kitchen, private dining rooms, theater, library, pool, dog park, volleyball, tennis, guest suites & much more! Located in the heart of Kakaako and Ward Village with walking distance to world class dining, shopping, theatre, and Ala Moana beach park. **Region:** Metro **Neighborhood:** Kakaako **Condition:** Excellent **Parking:** Assigned, Covered - 2, Guest **Total Parking:** 2 **View:** City, Marina/Canal, Mountain, Ocean, Sunset **Frontage:** **Pool:** **Zoning:** Kak - Kakaako Community Development Project **Sale Conditions:** None **Schools:** , , * [Request Showing](#), [Photos](#), [History](#), [Maps](#), [Deed](#), [Watch List](#), [Tax Info](#)

DOM = Days on Market, Occ. = Occupancy, FL = Floor Number