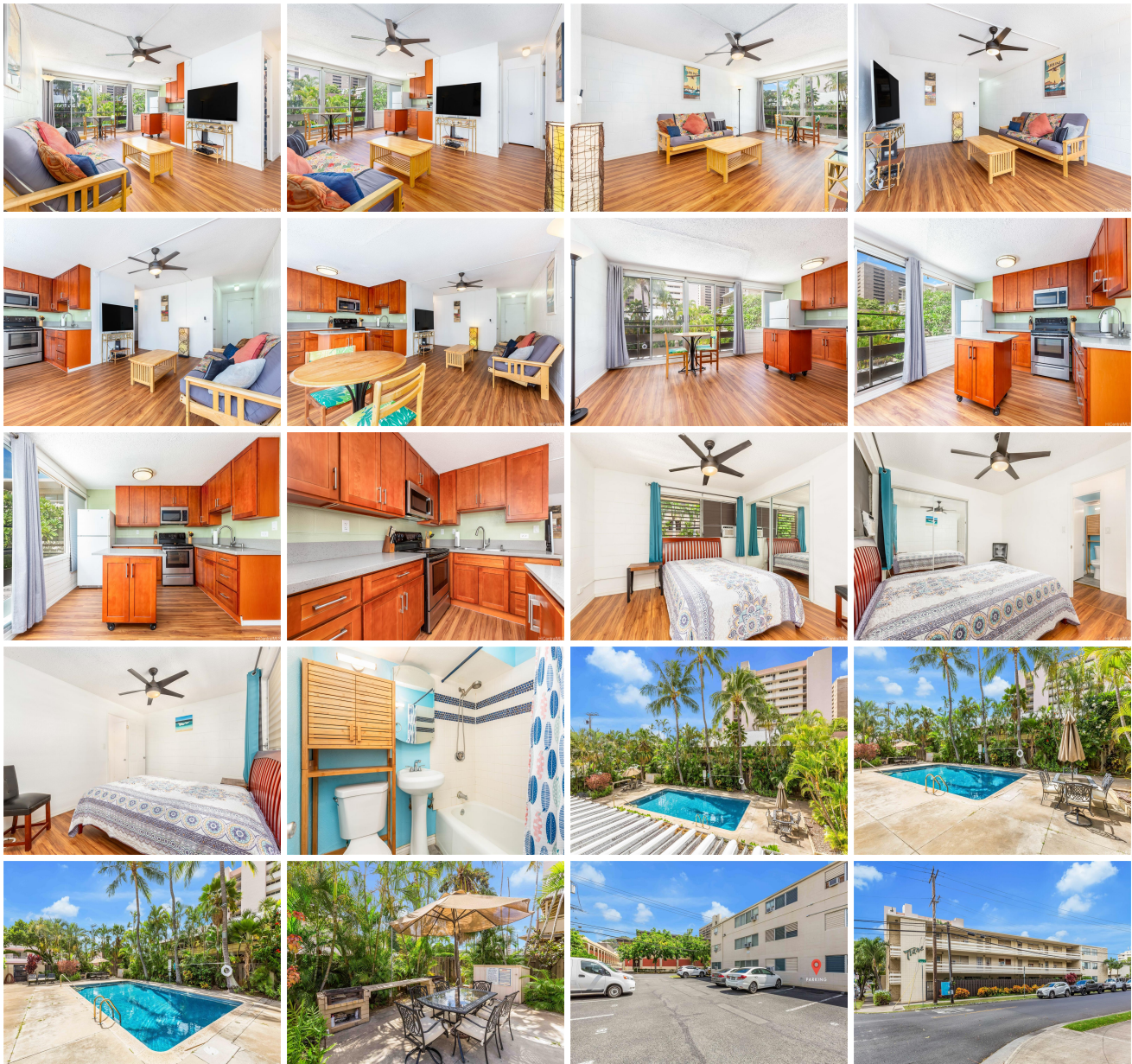


Tiare Apts 1735 Dole Street Unit 204, Honolulu 96822 * Tiare Apts * \$389,000 * Originally \$399,000

Beds: 1	MLS#: <u>202321529</u>, FS	Year Built: 1960
Bath: 1/0	Status: Active	Remodeled: 2021
Living Sq. Ft.: 572	List Date & DOM: 09-28-2023 & 227	Total Parking: 1
Land Sq. Ft.: 19,994	Condition: Above Average	Assessed Value
Lanai Sq. Ft.: 0	Frontage:	Building: \$128,800
Sq. Ft. Other: 0	Tax/Year: \$89/2023	Land: \$174,500
Total Sq. Ft. 572	Neighborhood: Punahou	Total: \$303,300
Maint./Assoc. \$488 / \$0	Flood Zone : Zone X - Tool	Stories / CPR: Three / No
Parking: Assigned, Open - 1, Street	Frontage:	
Zoning : 13 - A-3 High Density Apartment	View: None	

Public Remarks: Tiare Apts is conveniently located near Maryknoll, Punahou, and UH Manoa making it an ideal choice for students, faculty, and anyone looking for easy access to these educational institutions, Waikiki, or downtown Honolulu. The proximity to the H-1 freeway is an additional bonus and makes commuting from this location a breeze. The 1-bedroom, 1-bath unit on the 2nd floor is spacious with tons of natural light. The tasteful Seller upgrades with new vinyl flooring, stainless steel appliances, and new fixtures add a modern touch to the well appointed living space. The lush tropical landscaping bordering the pool, patio, and barbecue area offer a scenic and relaxing environment for residents and guests to enjoy. The secured key entry system provides a sense of safety and security for residents. The unit comes with one assigned parking space as well as a separate storage closet which allows owners to keep their belongings organized and secure on site. Do not miss out on this great opportunity, call your realtor today to schedule a showing. **Sale Conditions:** None **Schools:** [Lunalilo](#), [Washington, Roosevelt](#) * [Request Showing](#), [Photos](#), [History](#), [Maps](#), [Deed](#), [Watch List](#), [Tax Info](#)





Address	Price	Bd & Bth	Living / Avg.	Land Avg.	Lanai	Occ.	FL	DOM
1735 Dole Street 204	\$389,000	1 & 1/0	572 \$680	19,994 \$19	0	43%	2	227

Address	Tax Maint. Ass.	Assessed Land	Assessed Building	Assessed Total	Ratio	Year & Remodeled
1735 Dole Street 204	\$89 \$488 \$0	\$174,500	\$128,800	\$303,300	128%	1960 & 2021

[1735 Dole Street 204](#) - MLS#: [202321529](#) - Original price was \$399,000 - Tiare Apts is conveniently located near Maryknoll, Punahou, and UH Manoa making it an ideal choice for students, faculty, and anyone looking for easy access to these educational institutions, Waikiki, or downtown Honolulu. The proximity to the H-1 freeway is an additional bonus and makes commuting from this location a breeze. The 1-bedroom, 1-bath unit on the 2nd floor is spacious with tons of natural light. The tasteful Seller upgrades with new vinyl flooring, stainless steel appliances, and new fixtures add a modern touch to the well appointed living space. The lush tropical landscaping bordering the pool, patio, and barbecue area offer a scenic and relaxing environment for residents and guests to enjoy. The secured key entry system provides a sense of safety and security for residents. The unit comes with one assigned parking space as well as a separate storage closet which allows owners to keep their belongings organized and secure on site. Do not miss out on this great opportunity, call your realtor today to schedule a showing. **Region:** Metro **Neighborhood:** Punahou **Condition:** Above Average **Parking:** Assigned, Open - 1, Street **Total Parking:** 1 **View:** None **Frontage:** Pool: **Zoning:** 13 - A-3 High Density Apartment **Sale Conditions:** None **Schools:** [Lunalilo](#), [Washington](#), [Roosevelt](#) * [Request Showing](#), [Photos](#), [History](#), [Maps](#), [Deed](#), [Watch List](#), [Tax Info](#)

DOM = Days on Market, Occ. = Occupancy, FL = Floor Number