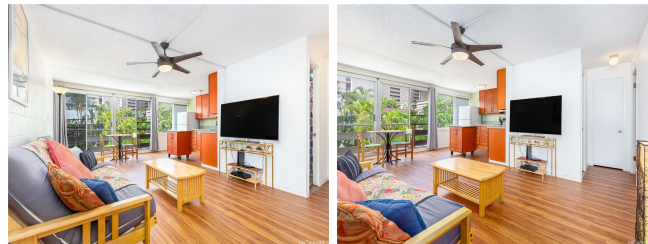


**Tiare Apts 1735 Dole Street Unit 204, Honolulu 96822 \* Tiare Apts \* \$389,000 \* Originally \$399,000**

Beds: <b>1</b>	MLS#: <b>202321529, FS</b>	Year Built: <b>1960</b>
Bath: <b>1/0</b>	Status: <b>Active</b>	Remodeled: <b>2021</b>
Living Sq. Ft.: <b>572</b>	List Date & DOM: <b>09-28-2023 &amp; 228</b>	Total Parking: <b>1</b>
Land Sq. Ft.: <b>19,994</b>	Condition: <b>Above Average</b>	<a href="#">Assessed Value</a>
Lanai Sq. Ft.: <b>0</b>	Frontage:	Building: <b>\$128,800</b>
Sq. Ft. Other: <b>0</b>	Tax/Year: <b>\$89/2023</b>	Land: <b>\$174,500</b>
Total Sq. Ft. <b>572</b>	Neighborhood: <b>Punahou</b>	Total: <b>\$303,300</b>
Maint./Assoc. <b>\$488 / \$0</b>	<a href="#">Flood Zone</a> : <b>Zone X - Tool</b>	Stories / CPR: <b>Three / No</b>
Parking: <b>Assigned, Open - 1, Street</b>	Frontage:	
<a href="#">Zoning</a> : <b>13 - A-3 High Density Apartment</b>	View: <b>None</b>	

**Public Remarks:** Tiare Apts is conveniently located near Maryknoll, Punahou, and UH Manoa making it an ideal choice for students, faculty, and anyone looking for easy access to these educational institutions, Waikiki, or downtown Honolulu. The proximity to the H-1 freeway is an additional bonus and makes commuting from this location a breeze. The 1-bedroom, 1-bath unit on the 2nd floor is spacious with tons of natural light. The tasteful Seller upgrades with new vinyl flooring, stainless steel appliances, and new fixtures add a modern touch to the well appointed living space. The lush tropical landscaping bordering the pool, patio, and barbecue area offer a scenic and relaxing environment for residents and guests to enjoy. The secured key entry system provides a sense of safety and security for residents. The unit comes with one assigned parking space as well as a separate storage closet which allows owners to keep their belongings organized and secure on site. Do not miss out on this great opportunity, call your realtor today to schedule a showing. **Sale Conditions:** None **Schools:** [Lunalilo](#), [Washington](#), [Roosevelt](#) \* [Request Showing](#), [Photos](#), [History](#), [Maps](#), [Deed](#), [Watch List](#), [Tax Info](#)



Address	Price	Bd & Bth	Living / Avg.	Land   Avg.	Lanai	Occ.	FL	DOM
<a href="#">1735 Dole Street 204</a>	<b>\$389,000</b>	1 & 1/0	572   \$680	19,994   \$19	0	43%	2	228

Address	Tax   Maint.   Ass.	Assessed Land	Assessed Building	Assessed Total	Ratio	Year & Remodeled
<a href="#">1735 Dole Street 204</a>	\$89   \$488   \$0	\$174,500	\$128,800	\$303,300	128%	1960 & 2021

[1735 Dole Street 204](#) - MLS#: [202321529](#) - Original price was \$399,000 - Tiare Apts is conveniently located near Maryknoll, Punahou, and UH Manoa making it an ideal choice for students, faculty, and anyone looking for easy access to these educational institutions, Waikiki, or downtown Honolulu. The proximity to the H-1 freeway is an additional bonus and makes commuting from this location a breeze. The 1-bedroom, 1-bath unit on the 2nd floor is spacious with tons of natural light. The tasteful Seller upgrades with new vinyl flooring, stainless steel appliances, and new fixtures add a modern touch to the well appointed living space. The lush tropical landscaping bordering the pool, patio, and barbecue area offer a scenic and relaxing environment for residents and guests to enjoy. The secured key entry system provides a sense of safety and security for residents. The unit comes with one assigned parking space as well as a separate storage closet which allows owners to keep their belongings organized and secure on site. Do not miss out on this great opportunity, call your realtor today to schedule a showing. **Region:** Metro **Neighborhood:** Punahou **Condition:** Above Average **Parking:** Assigned, Open - 1, Street **Total Parking:** 1 **View:** None **Frontage:** Pool: **Zoning:** 13 - A-3 High Density Apartment **Sale Conditions:** None **Schools:** [Lunalilo](#), [Washington](#), [Roosevelt](#) \* [Request Showing](#), [Photos](#), [History](#), [Maps](#), [Deed](#), [Watch List](#), [Tax Info](#)

DOM = Days on Market, Occ. = Occupancy, FL = Floor Number