

Allure Waikiki 1837 Kalakaua Avenue Unit 2602, Honolulu 96815 * Allure Waikiki *

\$1,393,000 * Originally \$1,493,000

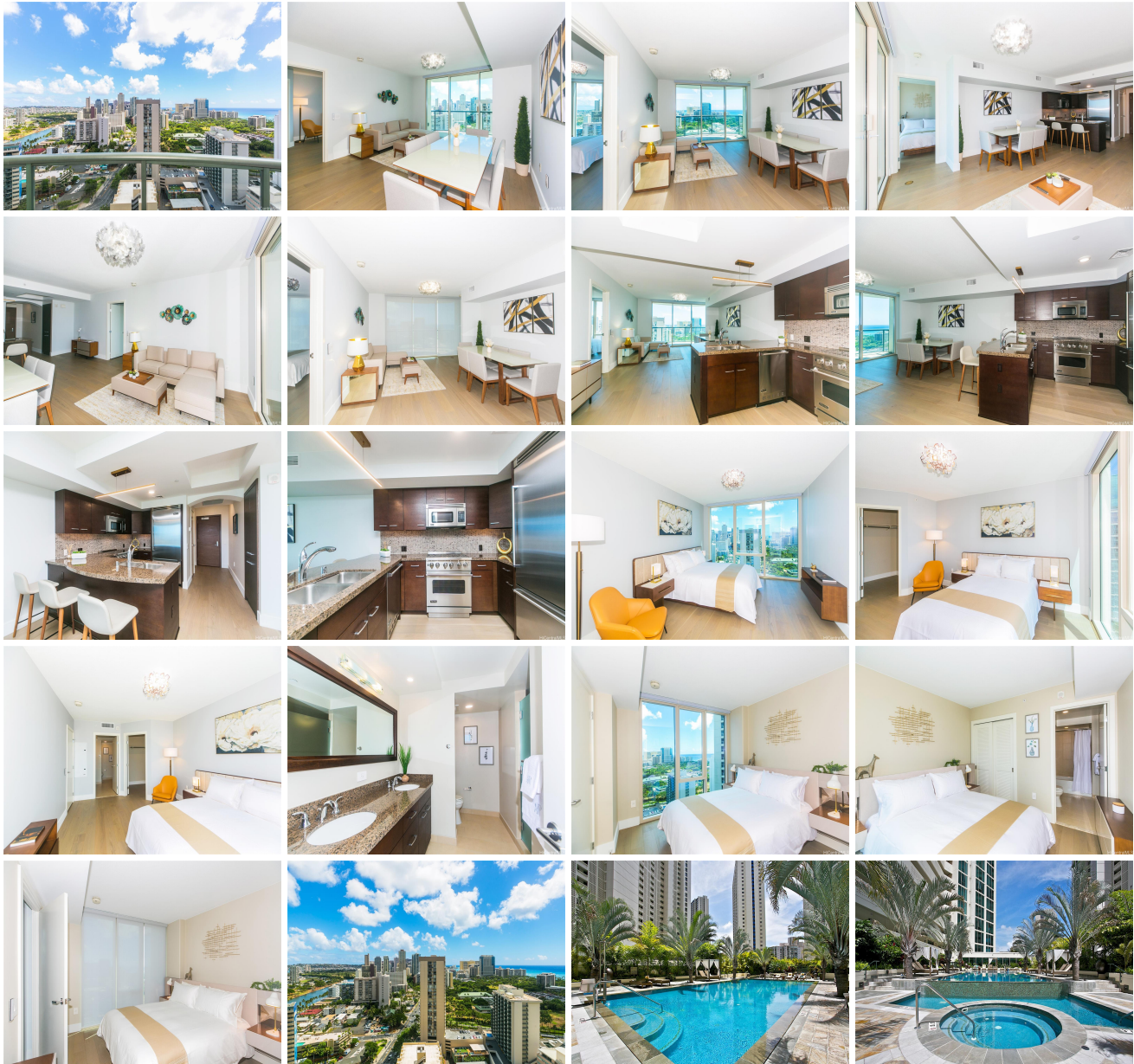
Beds: 2	MLS#: <u>202321744</u>, FS	Year Built: 2009
Bath: 2/0	Status: Active	Remodeled: 2023
Living Sq. Ft.: 1,057	List Date & DOM: 10-01-2023 & 226	Total Parking: 1
Land Sq. Ft.: 0	Condition: Excellent	Assessed Value
Lanai Sq. Ft.: 88	Frontage:	Building: \$1,064,100
Sq. Ft. Other: 0	Tax/Year: \$403/2024	Land: \$33,400
Total Sq. Ft. 1,145	Neighborhood: Waikiki	Total: \$1,097,500
Maint./Assoc. \$1,132 / \$0	Flood Zone : Zone AO - <u>Tool</u>	Stories / CPR: 21+ / No
Parking: Assigned, Covered - 1, Guest, Secured Entry	Frontage:	

Zoning: X6 - Resort Mixed Use Precinct

View: City, Diamond Head, Marina/Canal, Ocean, Sunrise

Public Remarks: Completely renovated, this immaculate #02 unit at Waikiki's prestigious Allure Waikiki luxury condominium boasts partial Diamond Head and ocean views! The unit has been impeccably maintained, presenting an almost brand-new condition. Revel in its array of amenities, including a gourmet kitchen equipped with Viking appliances, generous storage and closet space, and a spacious lanai. Residents can indulge in resort-like facilities, such as a fitness room, lushly landscaped pool area, BBQ facilities, and a meeting room. This pet-friendly unit includes one parking stall. Ideally located for a lifestyle of utmost convenience, it's in close proximity to Ala Moana Center, Ward Village, and provides easy access to Waikiki's dining, shopping, entertainment, and beaches. Embrace the island lifestyle – live, work, and play in Hawaii! Furniture is negotiable.

Sale Conditions: None **Schools:** , , * [Request Showing](#), [Photos](#), [History](#), [Maps](#), [Deed](#), [Watch List](#), [Tax Info](#)





Address	Price	Bd & Bth	Living / Avg.	Land Avg.	Lanai	Occ.	FL	DOM
1837 Kalakaua Avenue 2602	\$1,393,000	2 & 2/0	1,057 \$1,318	0 \$inf	88	44%	26	226

Address	Tax Maint. Ass.	Assessed Land	Assessed Building	Assessed Total	Ratio	Year & Remodeled
1837 Kalakaua Avenue 2602	\$403 \$1,132 \$0	\$33,400	\$1,064,100	\$1,097,500	127%	2009 & 2023

[1837 Kalakaua Avenue 2602](#) - MLS#: [202321744](#) - Original price was \$1,493,000 - Completely renovated, this immaculate #02 unit at Waikiki's prestigious Allure Waikiki luxury condominium boasts partial Diamond Head and ocean views! The unit has been impeccably maintained, presenting an almost brand-new condition. Revel in its array of amenities, including a gourmet kitchen equipped with Viking appliances, generous storage and closet space, and a spacious lanai. Residents can indulge in resort-like facilities, such as a fitness room, lushly landscaped pool area, BBQ facilities, and a meeting room. This pet-friendly unit includes one parking stall. Ideally located for a lifestyle of utmost convenience, it's in close proximity to Ala Moana Center, Ward Village, and provides easy access to Waikiki's dining, shopping, entertainment, and beaches. Embrace the island lifestyle – live, work, and play in Hawaii! Furniture is negotiable. **Region:** Metro **Neighborhood:** Waikiki
Condition: Excellent **Parking:** Assigned, Covered - 1, Guest, Secured Entry **Total Parking:** 1 **View:** City, Diamond Head, Marina/Canal, Ocean, Sunrise **Frontage:** **Pool:** **Zoning:** X6 - Resort Mixed Use Precinct **Sale Conditions:** None **Schools:** , ,
 * [Request Showing](#), [Photos](#), [History](#), [Maps](#), [Deed](#), [Watch List](#), [Tax Info](#)

DOM = Days on Market, Occ. = Occupancy, FL = Floor Number