

Harbor Court 66 Queen Street Unit 2901, Honolulu 96813 * Harbor Court * \$1,100,000

Beds: **2**

MLS#: **202321831, FS**

Year Built: **1994**

Bath: **2/0**

Status: **Active Under Contract**

Remodeled:

Living Sq. Ft.: **1,364**

List Date & DOM: **09-27-2023 & 114**

Total Parking: **2**

Land Sq. Ft.: **57,673**

Condition: **Above Average**

[Assessed Value](#)

Lanai Sq. Ft.: **210**

Frontage:

Building: **\$811,500**

Sq. Ft. Other: **0**

Tax/Year: **\$265/2023**

Land: **\$97,600**

Total Sq. Ft. **1,574**

Neighborhood: **Downtown**

Total: **\$909,100**

Maint./Assoc. **\$1,505 / \$0**

[Flood Zone](#): **Zone X - Tool**

Stories / CPR: **21+ / No**

Parking: **Covered - 2, Guest**

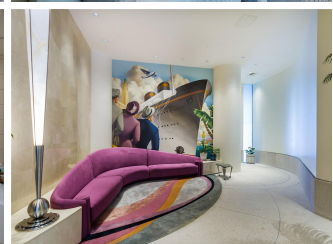
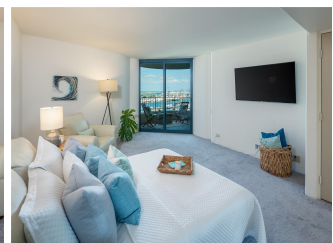
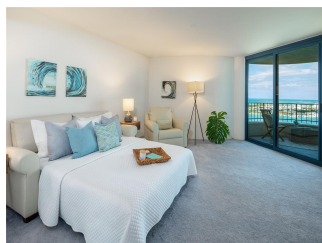
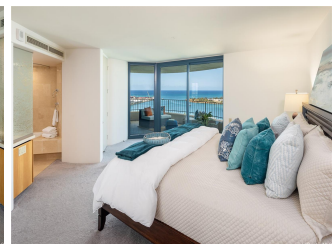
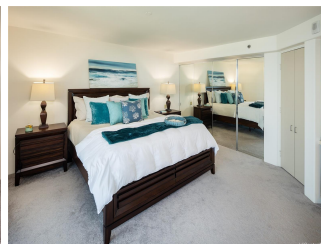
Frontage:

[Zoning](#): **34 - BMX-4 Central Business Mix**

View: **Coastline, Ocean, Sunset**

Public Remarks: BACK ON MARKET! Coveted high floor unit in prestigious Harbor Court, Honolulu's best kept secret for luxury resort style living in the heart of downtown. The '01 corner units are the only units in HC with a full-sized second bedroom, two lanais, & a large picture window in the living room highlighting direct ocean & iconic Aloha Tower views. This beautiful unit boasts a fresh and clean contemporary design with 2 bedrooms, ensuite baths, and open living/dining area. Sparkling ocean views from the living area, both bedrooms, and both lanais. Sit back and soak in the changing vistas of Honolulu Harbor, the Reef Runway, and Aloha Tower and enjoy spectacular sunsets and nighttime city lights. Central A/C with two zones. New appliances including washer/dryer, dishwasher, cooktop, and oven. Amenities include heated infinity pool, gazebo, Jacuzzi, BBQ area, gym, conference room, library and more. 24-hour security & Residential Site Manager. Two tandem parking spots. Fall in love with downtown living at Harbor Court, Honolulu's landmark commercial/residential building, just 10 mins from Honolulu International Airport. This beautiful, well-maintained building has no insurance-related issues.

Sale Conditions: None **Schools:** , , * [Request Showing](#), [Photos](#), [History](#), [Maps](#), [Deed](#), [Watch List](#), [Tax Info](#)





Address	Price	Bd & Bth	Living / Avg.	Land Avg.	Lanai	Occ.	FL	DOM
66 Queen Street 2901	\$1,100,000	2 & 2/0	1,364 \$806	57,673 \$19	210	84%	29	114

Address	Tax Maint. Ass.	Assessed Land	Assessed Building	Assessed Total	Ratio	Year & Remodeled
66 Queen Street 2901	\$265 \$1,505 \$0	\$97,600	\$811,500	\$909,100	121%	1994 & NA

[66 Queen Street 2901](#) - MLS#: [202321831](#) - BACK ON MARKET! Coveted high floor unit in prestigious Harbor Court, Honolulu's best kept secret for luxury resort style living in the heart of downtown. The '01 corner units are the only units in HC with a full-sized second bedroom, two lanais, & a large picture window in the living room highlighting direct ocean & iconic Aloha Tower views. This beautiful unit boasts a fresh and clean contemporary design with 2 bedrooms, ensuite baths, and open living/dining area. Sparkling ocean views from the living area, both bedrooms, and both lanais. Sit back and soak in the changing vistas of Honolulu Harbor, the Reef Runway, and Aloha Tower and enjoy spectacular sunsets and nighttime city lights. Central A/C with two zones. New appliances including washer/dryer, dishwasher, cooktop, and oven. Amenities include heated infinity pool, gazebo, Jacuzzi, BBQ area, gym, conference room, library and more. 24-hour security & Residential Site Manager. Two tandem parking spots. Fall in love with downtown living at Harbor Court, Honolulu's landmark commercial/residential building, just 10 mins from Honolulu International Airport. This beautiful, well-maintained building has no insurance-related issues. **Region:** Metro **Neighborhood:** Downtown **Condition:** Above Average **Parking:** Covered - 2, Guest **Total Parking:** 2 **View:** Coastline, Ocean, Sunset **Frontage:** **Pool:** **Zoning:** 34 - BMX-4 Central Business Mix **Sale Conditions:** None **Schools:** , , * [Request Showing](#), [Photos](#), [History](#), [Maps](#), [Deed](#), [Watch List](#), [Tax Info](#)

DOM = Days on Market, Occ. = Occupancy, FL = Floor Number