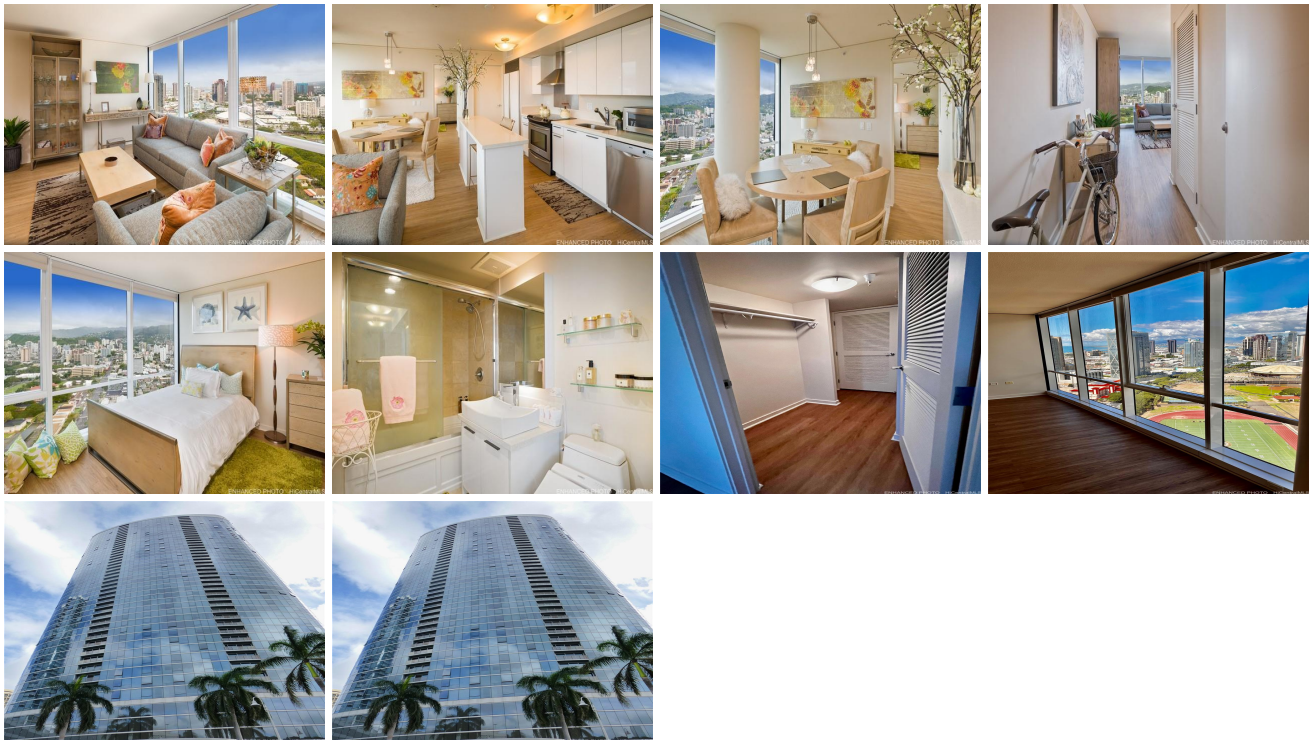


**Moana Pacific 1288 Kapiolani Boulevard Unit I-3901, Honolulu 96814 \* Moana Pacific \*****\$700,000 \* Originally \$726,000**

Beds: <b>1</b>	MLS#: <b>202321939, FS</b>	Year Built: <b>2007</b>
Bath: <b>1/0</b>	Status: <b>Active</b>	Remodeled: <b>2016</b>
Living Sq. Ft.: <b>701</b>	List Date & DOM: <b>10-01-2023 &amp; 219</b>	Total Parking: <b>1</b>
Land Sq. Ft.: <b>0</b>	Condition: <b>Excellent, Above Average</b>	<a href="#">Assessed Value</a>
Lanai Sq. Ft.: <b>0</b>	Frontage:	Building: <b>\$673,200</b>
Sq. Ft. Other: <b>0</b>	Tax/Year: <b>\$203/2023</b>	Land: <b>\$43,300</b>
Total Sq. Ft. <b>701</b>	Neighborhood: <b>Kakaako</b>	Total: <b>\$716,500</b>
Maint./Assoc. <b>\$785 / \$0</b>	<a href="#">Flood Zone</a> : <b>Zone AE - Tool</b>	Stories / CPR: <b>21+ / No</b>
Parking: <b>Assigned, Covered - 1, Guest, Secured Entry</b>	Frontage:	
<a href="#">Zoning</a> : <b>Kak - Kakaako Community Development Project</b>	View: <b>City, Mountain, Ocean, Sunset</b>	

**Public Remarks:** ENJOY LIVING AT A GREAT LOCATION WITH BREATHTAKING OPEN PANORAMIC OCEAN, CITY, AND MOUNTAIN VIEWS! Walking distance to Ala Moana Shopping Center, Ward Village, Neil Blaisdell Events Center, Ala Moana Beach Park, and more. This West Tower unit has been remodeled and freshly painted creating an updated modern space. It has floor to ceiling and wall to wall windows, vertical blinds, Subzero refrigerator, new water heater, Whirlpool range/oven and Bosch dishwasher replaced in 2020, Bosch washer and dryer, TOTO toilet system, walk-in bedroom closet, centralized A/C, and secured parking with an assigned stall conveniently located on the 2nd floor. Amenities includes fitness center, movie theater, Guest Parking Stalls, bike storage, event room, front desk, 24/7 security, UPS drop off at lobby, EV charging stations, BBQ areas, pool, whirlpool, putting green, tennis court, and driving range. **Sale Conditions:** None **Schools:** [Kaahumanu](#), [Stevenson](#), [Mckinley](#) \* [Request Showing](#), [Photos](#), [History](#), [Maps](#), [Deed](#), [Watch List](#), [Tax Info](#)



Address	Price	Bd & Bth	Living / Avg.	Land   Avg.	Lanai	Occ.	FL	DOM
<a href="#">1288 Kapiolani Boulevard I-3901</a>	<b>\$700,000</b>	1 & 1/0	701   \$999	0   \$inf	0	48%	37	219

Address	Tax   Maint.   Ass.	Assessed Land	Assessed Building	Assessed Total	Ratio	Year & Remodeled
<a href="#">1288 Kapiolani Boulevard I-3901</a>	\$203   \$785   \$0	\$43,300	\$673,200	\$716,500	98%	2007 & 2016

[1288 Kapiolani Boulevard I-3901](#) - MLS#: [202321939](#) - Original price was \$726,000 - ENJOY LIVING AT A GREAT LOCATION WITH BREATHTAKING OPEN PANORAMIC OCEAN, CITY, AND MOUNTAIN VIEWS! Walking distance to Ala Moana Shopping Center, Ward Village, Neil Blaisdell Events Center, Ala Moana Beach Park, and more. This West Tower unit has been remodeled and freshly painted creating an updated modern space. It has floor to ceiling and wall to wall windows, vertical blinds, Subzero refrigerator, new water heater, Whirlpool range/oven and Bosch dishwasher replaced in 2020, Bosch washer and dryer, TOTO toilet system, walk-in bedroom closet, centralized A/C, and secured parking with an assigned stall conveniently located on the 2nd floor. Amenities includes fitness center, movie theater, Guest Parking Stalls, bike storage, event room, front desk, 24/7 security, UPS drop off at lobby, EV charging stations, BBQ areas, pool, whirlpool, putting green, tennis court, and driving range. **Region:** Metro **Neighborhood:** Kakaako **Condition:** Excellent, Above Average **Parking:** Assigned, Covered - 1, Guest, Secured Entry **Total Parking:** 1 **View:** City, Mountain, Ocean, Sunset **Frontage:** **Pool:** **Zoning:** Kak - Kakaako Community Development Project **Sale Conditions:** None **Schools:** [Kaahumanu](#), [Stevenson](#), [Mckinley](#) \* [Request Showing](#), [Photos](#), [History](#), [Maps](#), [Deed](#), [Watch List](#), [Tax Info](#)

DOM = Days on Market, Occ. = Occupancy, FL = Floor Number