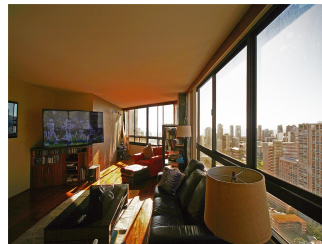


**Iolani Court Plaza 2499 Kapiolani Boulevard Unit 3708, Honolulu 96826 \* Iolani Court Plaza****\* \$589,000 \* Originally \$615,000**

Beds: <b>2</b>	MLS#: <b>202322093, FS</b>	Year Built: <b>1979</b>
Bath: <b>2/0</b>	Status: <b>Active</b>	Remodeled: <b>2021</b>
Living Sq. Ft.: <b>1,064</b>	List Date & DOM: <b>10-02-2023 &amp; 222</b>	Total Parking: <b>1</b>
Land Sq. Ft.: <b>95,048</b>	Condition: <b>Excellent</b>	<a href="#">Assessed Value</a>
Lanai Sq. Ft.: <b>0</b>	Frontage:	Building: <b>\$489,900</b>
Sq. Ft. Other: <b>0</b>	Tax/Year: <b>\$180/2022</b>	Land: <b>\$70,800</b>
Total Sq. Ft. <b>1,064</b>	Neighborhood: <b>Kapiolani</b>	Total: <b>\$560,700</b>
Maint./Assoc. <b>\$1,489 / \$0</b>	<a href="#">Flood Zone</a> : <b>Zone X - Tool</b>	Stories / CPR: <b>21+ / No</b>
Parking: <b>Assigned</b>	Frontage:	
<a href="#">Zoning</a> : <b>13 - A-3 High Density Apartment</b>	View: <b>City, Coastline, Marina/Canal, Mountain, Ocean, Sunset</b>	

**Public Remarks:** Price reduced again ! Rarely Available #08 Ocean Corner unit on 37th floor with Spectacular Ocean, City and Mountain Views! Enjoy this recently renovated Two Bedroom/ Two Bath Executive Suite with permitted Enclosed Lanai, Hardwood and Slate flooring, Granite Counters, Redesigned Kitchen with GE Profile Appliances, and other upgrades including a Built-in Entertainment Center to showcase mounted 70' Samsung TV. Freshly painted walls and cabinetry throughout condo. The Iolani Court Plaza is a well maintained Condominium with many amenities including Pool, Jacuzzi, BBQ, 2 lighted and newly resurfaced Tennis courts, Sauna and large Recreation Deck and Recreation Room, and lots of guest parking! You will find the layout of this condo complex extremely convenient with easy in/out access to parking, lobby and amenities, and even includes a convenience store on the first floor. The location of this property is centrally located close to freeway access, Iolani School, Kaimuki High School, University of Hawaii, Ala Wai golf course, bus stop and Ala Moana Shopping Center and Medical Facilities. Seller would consider providing flexible PARTIAL SELLER FINANCING as needed. **Sale Conditions:** None **Schools:** , , \* [Request Showing](#), [Photos](#), [History](#), [Maps](#), [Deed](#), [Watch List](#), [Tax Info](#)



Address	Price	Bd & Bth	Living / Avg.	Land   Avg.	Lanai	Occ.	FL	DOM
<a href="#">2499 Kapiolani Boulevard 3708</a>	<b>\$589,000</b>	2 & 2/0	1,064   \$554	95,048   \$6	0	59%	37	222

Address	Tax   Maint.   Ass.	Assessed Land	Assessed Building	Assessed Total	Ratio	Year & Remodeled
<a href="#">2499 Kapiolani Boulevard 3708</a>	\$180   \$1,489   \$0	\$70,800	\$489,900	\$560,700	105%	1979 & 2021

[2499 Kapiolani Boulevard 3708](#) - MLS#: [202322093](#) - Original price was \$615,000 - Price reduced again ! Rarely Available #08 Ocean Corner unit on 37th floor with Spectacular Ocean, City and Mountain Views! Enjoy this recently renovated Two Bedroom/ Two Bath Executive Suite with permitted Enclosed Lanai, Hardwood and Slate flooring, Granite Counters, Redesigned Kitchen with GE Profile Appliances, and other upgrades including a Built-in Entertainment Center to showcase mounted 70' Samsung TV. Freshly painted walls and cabinetry throughout condo. The Iolani Court Plaza is a well maintained Condominium with many amenities including Pool, Jacuzzi, BBQ, 2 lighted and newly resurfaced Tennis courts, Sauna and large Recreation Deck and Recreation Room, and lots of guest parking! You will find the layout of this condo complex extremely convenient with easy in/out access to parking, lobby and amenities, and even includes a convenience store on the first floor. The location of this property is centrally located close to freeway access, Iolani School, Kaimuki High School, University of Hawaii, Ala Wai golf course, bus stop and Ala Moana Shopping Center and Medical Facilities. Seller would consider providing flexible PARTIAL SELLER FINANCING as needed. **Region:** Metro **Neighborhood:** Kapiolani **Condition:** Excellent **Parking:** Assigned **Total Parking:** 1 **View:** City, Coastline, Marina/Canal, Mountain, Ocean, Sunset **Frontage:** **Pool:** **Zoning:** 13 - A-3 High Density Apartment **Sale Conditions:** None **Schools:** , , \* [Request Showing](#), [Photos](#), [History](#), [Maps](#), [Deed](#), [Watch List](#), [Tax Info](#)

DOM = Days on Market, Occ. = Occupancy, FL = Floor Number