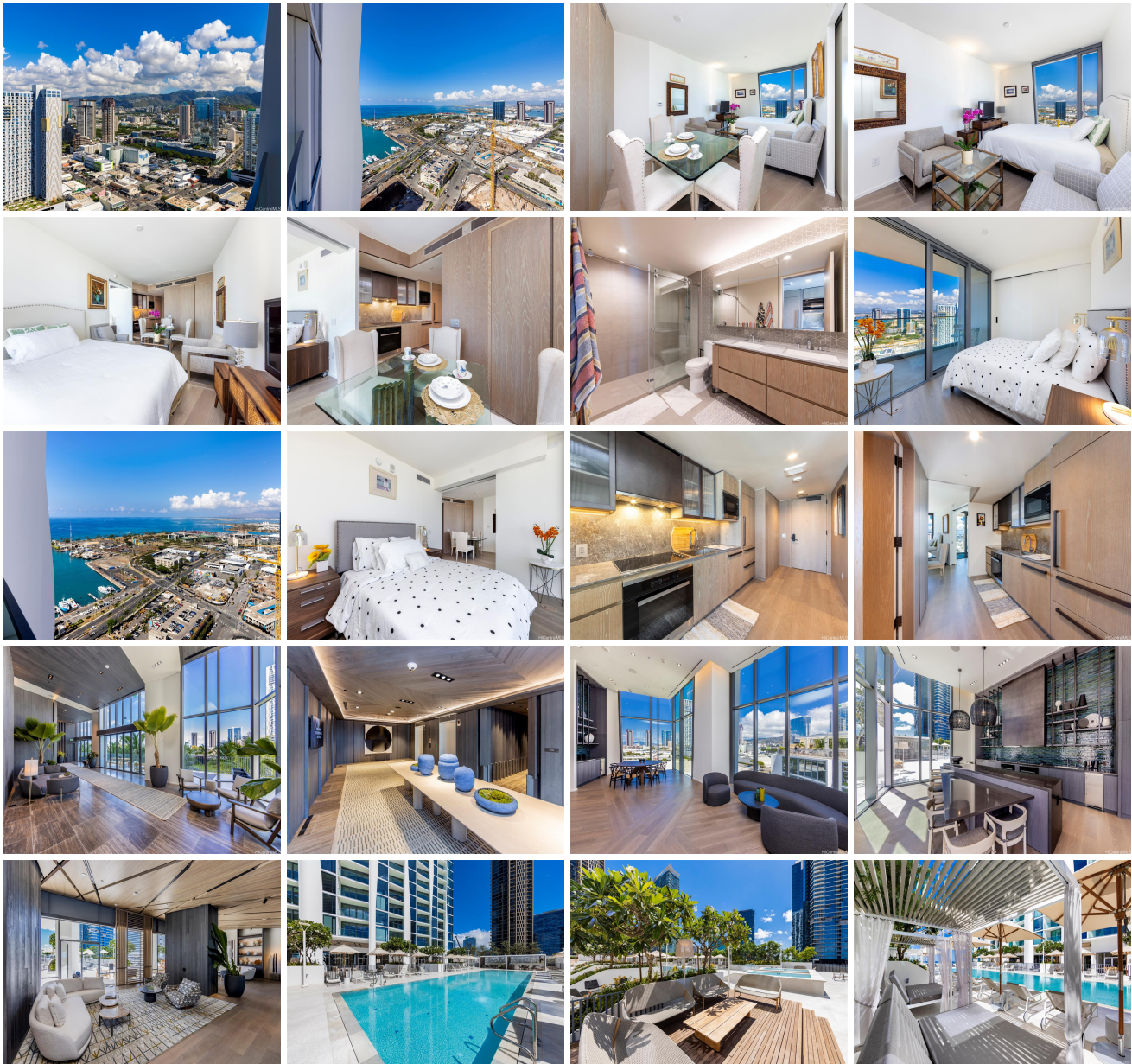


**Koula 1000 Auahi Street Unit 3611, Honolulu 96814 \* Koula \* \$1,095,000**

Beds: <b>1</b>	MLS#: <b><u>202322381</u>, FS</b>	Year Built: <b>2021</b>
Bath: <b>1/0</b>	Status: <b>Active</b>	Remodeled:
Living Sq. Ft.: <b>561</b>	List Date & DOM: <b>10-06-2023 &amp; 223</b>	Total Parking: <b>1</b>
Land Sq. Ft.: <b>0</b>	Condition: <b>Excellent</b>	<a href="#">Assessed Value</a>
Lanai Sq. Ft.: <b>68</b>	Frontage: <b>Other</b>	Building: <b>\$812,100</b>
Sq. Ft. Other: <b>0</b>	Tax/Year: <b>\$245/2023</b>	Land: <b>\$26,200</b>
Total Sq. Ft. <b>629</b>	Neighborhood: <b>Kakaako</b>	Total: <b>\$838,300</b>
Maint./Assoc. <b>\$711 / \$0</b>	<a href="#">Flood Zone</a> : <b>Zone AE - <u>Tool</u></b>	Stories / CPR: <b>21+ / No</b>
Parking: <b>Assigned, Covered - 1, Garage, Guest, Secured Entry</b>	Frontage: <b>Other</b>	
<a href="#">Zoning</a> : <b>Kak - Kakaako Community Development Project</b>	View: <b>City, Ocean</b>	

**Public Remarks:** Ko`ula at Ward Village is one of Honolulu's newest luxury condominium residences. Designed with inspirations from Hawaii's natural majesty, Ko`ula implements high-end design with upscale elegance. This high floor 1 bedroom, 1 bath unit enjoys Pacific Ocean views from the main living room, bedroom, and lanai spaces. The current interior design reflects two bedroom sets to show the flexibility of the living space. Coveted for its true resort amenities, Ko`ula elevates Kaka`ako living to a new level of island lifestyle. Its superb location puts you alongside Kaka`ako's flagship Whole Foods, blocks to Ala Moana Beach Park, Ala Moana Shopping Center, and many more nearby shops, restaurants, and entertainment options, creating the sought-after "Work, Play, Live" lifestyle in Hawaii. **Sale Conditions:** None **Schools:** [Kaahumanu](#), [Stevenson](#), [Mckinley](#) \* [Request Showing](#), [Photos](#), [History](#), [Maps](#), [Deed](#), [Watch List](#), [Tax Info](#)





Address	Price	Bd & Bth	Living / Avg.	Land   Avg.	Lanai	Occ.	FL	DOM
<a href="#">1000 Auahi Street 3611</a>	<a href="#">\$1,095,000</a>	1 & 1/0	561   \$1,952	0   \$inf	68	9%	36	223

Address	Tax   Maint.   Ass.	Assessed Land	Assessed Building	Assessed Total	Ratio	Year & Remodeled
<a href="#">1000 Auahi Street 3611</a>	\$245   \$711   \$0	\$26,200	\$812,100	\$838,300	131%	2021 & NA

[1000 Auahi Street 3611](#) - MLS#: [202322381](#) - Ko`ula at Ward Village is one of Honolulu's newest luxury condominium residences. Designed with inspirations from Hawaii's natural majesty, Ko`ula implements high-end design with upscale elegance. This high floor 1 bedroom, 1 bath unit enjoys Pacific Ocean views from the main living room, bedroom, and lanai spaces. The current interior design reflects two bedroom sets to show the flexibility of the living space. Coveted for its true resort amenities, Ko`ula elevates Kaka`ako living to a new level of island lifestyle. Its superb location puts you alongside Kaka`ako's flagship Whole Foods, blocks to Ala Moana Beach Park, Ala Moana Shopping Center, and many more nearby shops, restaurants, and entertainment options, creating the sought-after "Work, Play, Live" lifestyle in Hawaii. **Region:** Metro **Neighborhood:** Kakaako **Condition:** Excellent **Parking:** Assigned, Covered - 1, Garage, Guest, Secured Entry **Total Parking:** 1 **View:** City, Ocean **Frontage:** Other **Pool:** **Zoning:** Kak - Kakaako Community Development Project **Sale Conditions:** None **Schools:** [Kaahumanu](#), [Stevenson](#), [Mckinley](#) \* [Request Showing](#), [Photos](#), [History](#), [Maps](#), [Deed](#), [Watch List](#), [Tax Info](#)

DOM = Days on Market, Occ. = Occupancy, FL = Floor Number