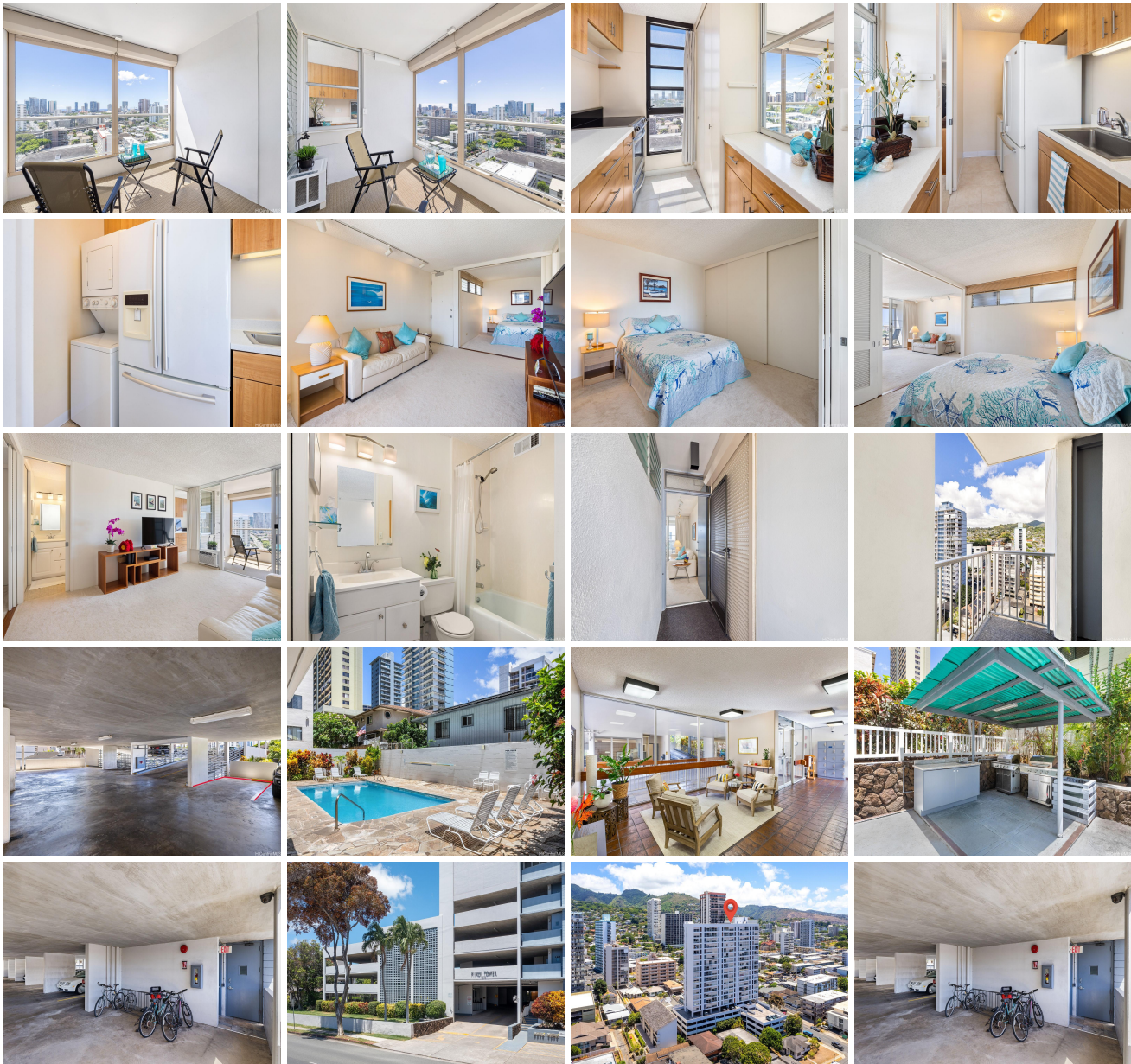


**Piikoi Tower 1556 Piikoi Street Unit 1708, Honolulu 96822 \* Piikoi Tower \* \$425,000 \***

**Originally \$440,000**

|   |  |                                  |
|---|--|----------------------------------|
| Beds: <b>1</b>  | MLS#: <b><u>202323783</u>, FS</b>                        | Year Built: <b>1975</b>          |
| Bath: <b>1/0</b>  | Status: <b>Active</b>                                    | Remodeled:                       |
| Living Sq. Ft.: <b>530</b>                                      | List Date & DOM: <b>10-12-2023 &amp; 216</b>             | Total Parking: <b>1</b>          |
| Land Sq. Ft.: <b>27,051</b>                                     | Condition: <b>Above Average</b>                          | <a href="#">Assessed Value</a>   |
| Lanai Sq. Ft.: <b>83</b>  | Frontage:  | Building: <b>\$341,000</b>       |
| Sq. Ft. Other: <b>0</b>   | Tax/Year: <b>\$43/2023</b>                               | Land: <b>\$46,200</b>            |
| Total Sq. Ft. <b>613</b>  | Neighborhood: <b>Makiki Area</b>                         | Total: <b>\$387,200</b>          |
| Maint./Assoc. <b>\$703 / \$0</b>                                | <a href="#">Flood Zone</a> : <b>Zone X - <u>Tool</u></b> | Stories / CPR: <b>15-20 / No</b> |
| Parking: <b>Assigned, Covered - 1, Guest, Street</b>            | Frontage:  |                                  |
| <a href="#">Zoning</a> : <b>12 - A-2 Medium Density Apartme</b> | View: <b>City, Coastline, Ocean</b>                      |                                  |

**Public Remarks:** Piikoi Tower is Centrally located in Makiki. Close to downtown Honolulu, Kaka'ako and UH with easy access to bus lines, freeways, restaurants and shopping. This well maintained 1 bedroom, 1 bath unit with an 83 Sf lanai gives you beautiful views of the city skyline with partial ocean views. Enjoy the cool breezes in this high floor, corner end unit with an extra breezeway at the entrance that can be opened during the day. In the evening, enjoy the twinkling city lights while dining al fresco on the lanai. The lanai has automatic shutters with a remote control for easy operation. This unit includes a window A/C, washer/dryer in unit and One assigned, covered corner parking stall. Building amenities include a salt water pool, BBQ area, recreation room, trash chute and 6+ guest parking stalls. Electricity IS included in MF and building is pet friendly, too ! **Sale Conditions:** None **Schools:** [Kaahumanu](#), [Stevenson](#), [Mckinley](#) \* [Request Showing](#), [Photos](#), [History](#), [Maps](#), [Deed](#), [Watch List](#), [Tax Info](#)



| Address                                 | Price            | Bd & Bth | Living / Avg. | Land   Avg.   | Lanai | Occ. | FL | DOM |
|---|------------------|----------|---------------|---------------|-------|------|----|-----|
| <a href="#">1556 Piikoi Street 1708</a> | <b>\$425,000</b> | 1 & 1/0  | 530   \$802   | 27,051   \$16 | 83    | 52%  | 17 | 216 |

| Address                                 | Tax   Maint.   Ass. | Assessed Land | Assessed Building | Assessed Total | Ratio | Year & Remodeled |
|---|---------------------|---------------|-------------------|----------------|-------|------------------|
| <a href="#">1556 Piikoi Street 1708</a> | \$43   \$703   \$0  | \$46,200      | \$341,000         | \$387,200      | 110%  | 1975 & NA        |

[1556 Piikoi Street 1708](#) - MLS#: [202323783](#) - Original price was \$440,000 - Piikoi Tower is Centrally located in Makiki. Close to downtown Honolulu, Kaka'ako and UH with easy access to bus lines, freeways, restaurants and shopping. This well maintained 1 bedroom, 1 bath unit with an 83 Sf lanai gives you beautiful views of the city skyline with partial ocean views. Enjoy the cool breezes in this high floor, corner end unit with an extra breezeway at the entrance that can be opened during the day. In the evening, enjoy the twinkling city lights while dining al fresco on the lanai. The lanai has automatic shutters with a remote control for easy operation. This unit includes a window A/C, washer/dryer in unit and One assigned, covered corner parking stall. Building amenities include a salt water pool, BBQ area, recreation room, trash chute and 6+ guest parking stalls. Electricity IS included in MF and building is pet friendly, too ! **Region:** Metro **Neighborhood:** Makiki Area **Condition:** Above Average **Parking:** Assigned, Covered - 1, Guest, Street **Total Parking:** 1 **View:** City, Coastline, Ocean **Frontage:** Pool: **Zoning:** 12 - A-2 Medium Density Apartme **Sale Conditions:** None **Schools:** [Kaahumanu](#), [Stevenson](#), [Mckinley](#) \* [Request Showing](#), [Photos](#), [History](#), [Maps](#), [Deed](#), [Watch List](#), [Tax Info](#)

DOM = Days on Market, Occ. = Occupancy, FL = Floor Number