

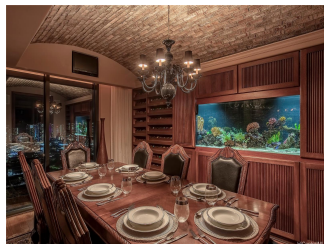
**The Pinnacle Honolulu 1199 Bishop Street Unit Penthouse, Honolulu 96813 * The Pinnacle
Honolulu * \$3,888,500 * Originally \$3,988,500**

Beds: 3	MLS#: <u>202324315</u>, FS	Year Built: 2008
Bath: 3/1	Status: Active	Remodeled:
Living Sq. Ft.: 3,964	List Date & DOM: 10-24-2023 & 209	Total Parking: 4
Land Sq. Ft.: 13,937	Condition: Excellent	Assessed Value
Lanai Sq. Ft.: 962	Frontage: Other	Building: \$1,742,800
Sq. Ft. Other: 0	Tax/Year: \$1,367/2023	Land: \$345,500
Total Sq. Ft. 4,926	Neighborhood: Downtown	Total: \$2,088,300
Maint./Assoc. \$4,381 / \$0	Flood Zone : Zone X - Tool	Stories / CPR: 21+ / No
Parking: Assigned, Covered - 3+, Guest, Secured Entry	Frontage: Other	

Zoning: 34 - BMX-4 Central Business Mix

View: City, Coastline, Diamond Head, Mountain, Ocean, Sunrise, Sunset

Public Remarks: The Pinnacle of Honolulu—Luxury Living in Downtown Honolulu's most exclusive Penthouse awaits you. Prepare to be captivated by the luxury, size, views, and meticulous attention to detail. This one-of-a-kind penthouse boasts a unique design that sets it apart from anything you've ever seen as it spans both the 35th and 36th floors of the building, giving unparalleled privacy and space and both floors serviced by an interior private elevator. Tastefully decorated with exquisite details, from opulent furniture to the rich African mahogany wood accents, a wine tasting/dining room and features a custom saltwater aquarium for the aquatic enthusiast. Experience a lifestyle of limitless opportunities for entertainment and luxurious living right in the heart of downtown Honolulu. This residence offers an extraordinary blend of sophistication and urban charm, inviting you to indulge in the epitome of refined city living. There's an opportunity to create a home office with the BMX-4 Zoning - look into the tax benefits! **Sale Conditions:** None **Schools:** [Royal](#), [Keelikolani](#), [Mckinley](#) * [Request Showing](#), [Photos](#), [History](#), [Maps](#), [Deed](#), [Watch List](#), [Tax Info](#)





Address	Price	Bd & Bth	Living / Avg.	Land Avg.	Lanai	Occ.	FL	DOM
1199 Bishop Street Penthouse	\$3,888,500	3 & 3/1	3,964 \$981	13,937 \$279	962	86%	35	209

Address	Tax Maint. Ass.	Assessed Land	Assessed Building	Assessed Total	Ratio	Year & Remodeled
1199 Bishop Street Penthouse	\$1,367 \$4,381 \$0	\$345,500	\$1,742,800	\$2,088,300	186%	2008 & NA

[1199 Bishop Street Penthouse](#) - MLS#: [202324315](#) - Original price was \$3,988,500 - The Pinnacle of Honolulu-Luxury Living in Downtown Honolulu's most exclusive Penthouse awaits you. Prepare to be captivated by the luxury, size, views, and meticulous attention to detail. This one-of-a-kind penthouse boasts a unique design that sets it apart from anything you've ever seen as it spans both the 35th and 36th floors of the building, giving unparalleled privacy and space and both floors serviced by an interior private elevator. Tastefully decorated with exquisite details, from opulent furniture to the rich African mahogany wood accents, a wine tasting/dining room and features a custom saltwater aquarium for the aquatic enthusiast. Experience a lifestyle of limitless opportunities for entertainment and luxurious living right in the heart of downtown Honolulu. This residence offers an extraordinary blend of sophistication and urban charm, inviting you to indulge in the epitome of refined city living. There's an opportunity to create a home office with the BMX-4 Zoning - look into the tax benefits! **Region:** Metro **Neighborhood:** Downtown **Condition:** Excellent **Parking:** Assigned, Covered - 3+, Guest, Secured Entry **Total Parking:** 4 **View:** City, Coastline, Diamond Head, Mountain, Ocean, Sunrise, Sunset **Frontage:** Other **Pool:** **Zoning:** 34 - BMX-4 Central Business Mix **Sale Conditions:** None **Schools:** [Royal](#), [Keelikolani](#), [Mckinley](#) * [Request Showing](#), [Photos](#), [History](#), [Maps](#), [Deed](#), [Watch List](#), [Tax Info](#)

DOM = Days on Market, Occ. = Occupancy, FL = Floor Number