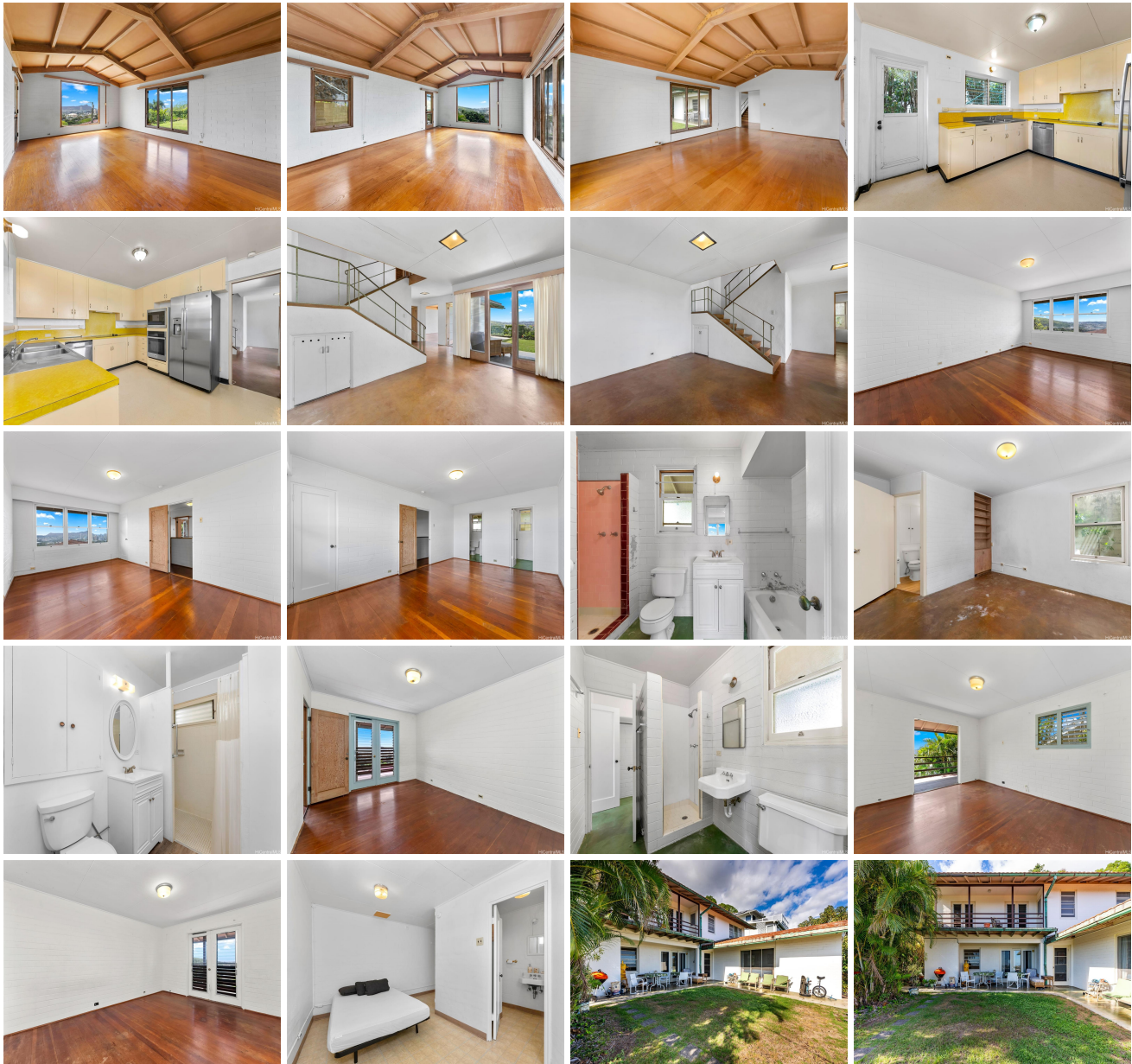
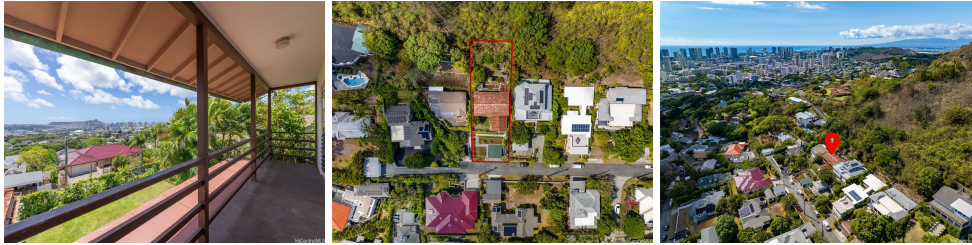


**2326 Sonoma Street, Honolulu 96822 \* \* \$2,280,000 \* Originally \$2,400,000**

Beds: <b>5</b>	MLS#: <b>202324407, FS</b>	Year Built: <b>1948</b>
Bath: <b>4/0</b>	Status: <b>Active</b>	Remodeled:
Living Sq. Ft.: <b>1,981</b>	List Date & DOM: <b>11-03-2023 &amp; 197</b>	Total Parking: <b>2</b>
Land Sq. Ft.: <b>10,200</b>	Condition: <b>Above Average</b>	<a href="#">Assessed Value</a>
Lanai Sq. Ft.: <b>88</b>	Frontage:	Building: <b>\$269,900</b>
Sq. Ft. Other: <b>0</b>	Tax/Year: <b>\$25/2024</b>	Land: <b>\$1,969,800</b>
Total Sq. Ft. <b>2,069</b>	Neighborhood: <b>Manoa Area</b>	Total: <b>\$2,239,700</b>
Maint./Assoc. <b>\$0 / \$0</b>	<a href="#">Flood Zone</a> : <b>Zone X - Tool</b>	Stories / CPR: <b>Basement, Two / No</b>
Parking: <b>2 Car, Carport, Street</b>	Frontage:	
<a href="#">Zoning</a> : <b>03 - R10 - Residential District</b>	View: <b>City, Diamond Head, Mountain, Ocean</b>	

**Public Remarks:** Enjoy breathtaking Diamond Head, ocean and city views from this 5 bdrm/4 bath home, incl. a BONUS 1 bdrm/1 bath with its own SEPARATE ENTRY, in the highly coveted Manoa neighborhood. Situated on an expansive 10,200 sq. ft. lot, this classic mid-century style historic residence was designed by renowned Hawaii architect Ted Vierra. With almost 2,000 sq. ft. of interior living space, this home features vaulted open beam ceilings in the living room, spacious kitchen with stainless steel appliances, and a nice open yard space where you can entertain family and guests. Relax on your covered lanai as you soak in the stunning views. Ideally located just minutes from some of Hawaii's best schools, parks, shopping and restaurants. Must see to appreciate! **Sale Conditions:** None **Schools:** [Noelani](#), [Stevenson](#), [Roosevelt](#) \* [Request Showing](#), [Photos](#), [History](#), [Maps](#), [Deed](#), [Watch List](#), [Tax Info](#)





Address	Price	Bd & Bth	Living / Avg.	Land   Avg.	Lanai	Occ.	FL	DOM
<a href="#">2326 Sonoma Street</a>	<b>\$2,280,000</b>	5 & 4/0	1,981   \$1,151	10,200   \$224	88	0%	0	197

Address	Tax   Maint.   Ass.	Assessed Land	Assessed Building	Assessed Total	Ratio	Year & Remodeled
<a href="#">2326 Sonoma Street</a>	\$25   \$0   \$0	\$1,969,800	\$269,900	\$2,239,700	102%	1948 & NA

[2326 Sonoma Street](#) - MLS#: [202324407](#) - Original price was \$2,400,000 - Enjoy breathtaking Diamond Head, ocean and city views from this 5 bdrm/4 bath home, incl. a BONUS 1 bdrm/1 bath with its own SEPARATE ENTRY, in the highly coveted Manoa neighborhood. Situated on an expansive 10,200 sq. ft. lot, this classic mid-century style historic residence was designed by renowned Hawaii architect Ted Vierra. With almost 2,000 sq. ft. of interior living space, this home features vaulted open beam ceilings in the living room, spacious kitchen with stainless steel appliances, and a nice open yard space where you can entertain family and guests. Relax on your covered lanai as you soak in the stunning views. Ideally located just minutes from some of Hawaii's best schools, parks, shopping and restaurants. Must see to appreciate! **Region:** Metro **Neighborhood:** Manoa Area **Condition:** Above Average **Parking:** 2 Car, Carport, Street **Total Parking:** 2 **View:** City, Diamond Head, Mountain, Ocean **Frontage:** **Pool:** None **Zoning:** 03 - R10 - Residential District **Sale Conditions:** None **Schools:** [Noelani](#), [Stevenson](#), [Roosevelt](#) \* [Request Showing](#), [Photos](#), [History](#), [Maps](#), [Deed](#), [Watch List](#), [Tax Info](#)

DOM = Days on Market, Occ. = Occupancy, FL = Floor Number