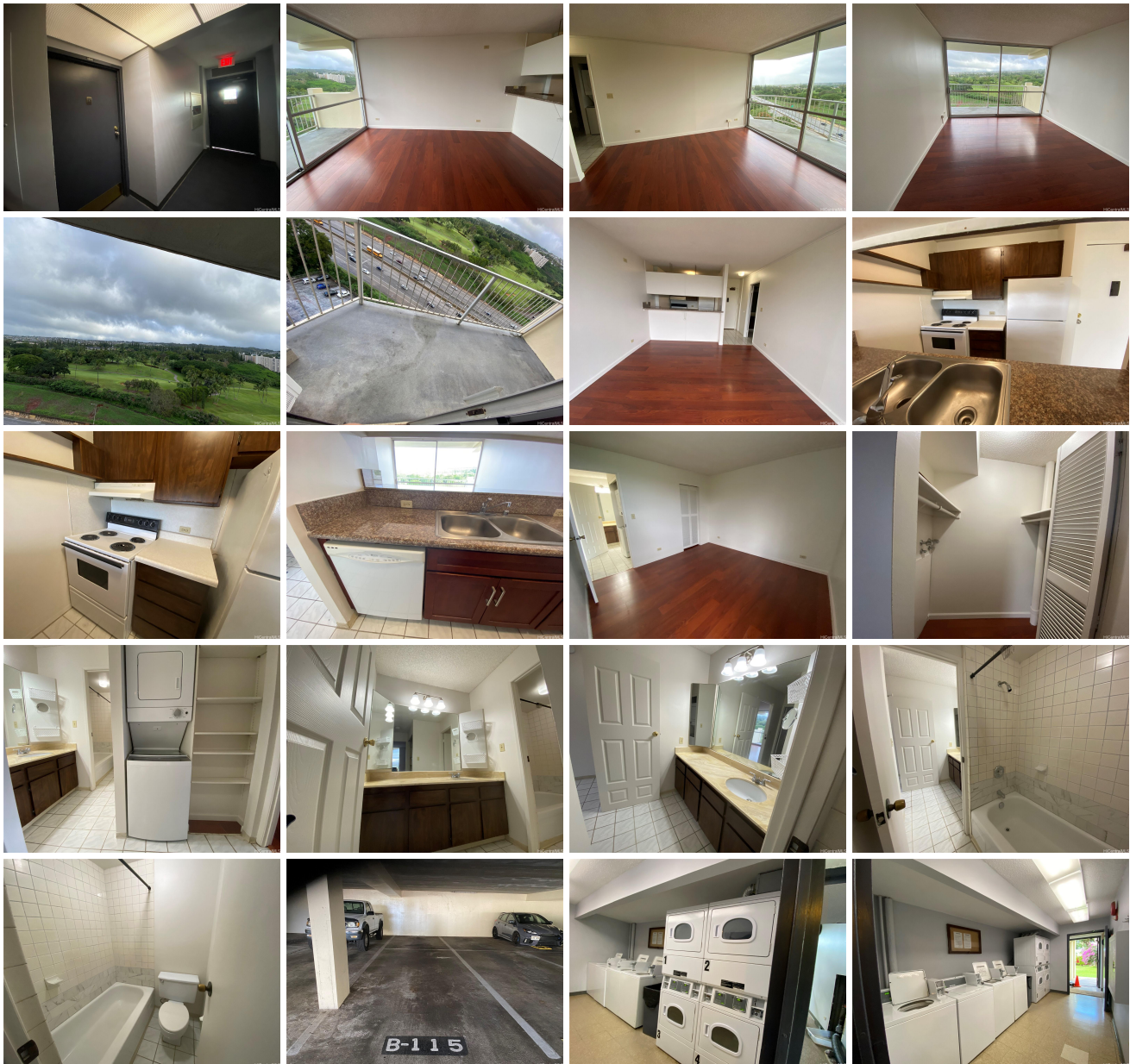


## **Highlander 98-450 Koauka Loop Unit 1606, Aiea 96701 \* Highlander \* \$425,000**

Beds: <b>1</b>	MLS#: <b>202324452, FS</b>	Year Built: <b>1975</b>
Bath: <b>1/0</b>	Status: <b>Active</b>	Remodeled:
Living Sq. Ft.: <b>514</b>	List Date & DOM: <b>12-21-2023 &amp; 139</b>	Total Parking: <b>2</b>
Land Sq. Ft.: <b>0</b>	Condition: <b>Above Average</b>	<a href="#">Assessed Value</a>
Lanai Sq. Ft.: <b>72</b>	Frontage: <b>Other</b>	Building: <b>\$314,900</b>
Sq. Ft. Other: <b>0</b>	Tax/Year: <b>\$107/2023</b>	Land: <b>\$51,800</b>
Total Sq. Ft. <b>586</b>	Neighborhood: <b>Pearlridge</b>	Total: <b>\$366,700</b>
Maint./Assoc. <b>\$747 / \$0</b>	<a href="#">Flood Zone</a> : <b>Zone X - Tool</b>	Stories / CPR: <b>One / No</b>
Parking: <b>Assigned, Covered - 2, Guest, Street</b>	Frontage: <b>Other</b>	
<a href="#">Zoning</a> : <b>12 - A-2 Medium Density Apartme</b>	View: <b>Garden, Mountain, Other</b>	

**Public Remarks:** Enjoy living at the HIGHLANDER in this partly furnished 1 bedroom, 1 bath home consisting of approximately 514 square feet of living space and a 72 square feet lanai. This unit includes 2 Tandem covered secured parking stalls. It's in a Great location very close to Pearlridge Shopping Center, Pali Momi Medical Center, Pearl Harbor/Hickam Air Force Base, Restaurants, Schools and Churches. This is an end unit, next to a fire exit door and trash chute. This property is being sold in "as is" condition. Appliances for this home includes a range/oven, refrigerator, dishwasher, disposal, range hood, washer/dryer and a window ac unit. Amenities for this unit include a BBQ area, Community Association Pool, Community Laundry area, Exercise Room, Meeting Room, Swimming pool, Sauna, Security Guards, Storage, Trash chute and Whirlpool. There's guest parking and street parking. The bus stop is in front of the building. **Sale Conditions: None Schools: Alvah Scott, Aiea, Aiea** \* [Request Showing](#), [Photos](#), [History](#), [Maps](#), [Deed](#), [Watch List](#), [Tax Info](#)





Address	Price	Bd & Bth	Living / Avg.	Land   Avg.	Lanai	Occ.	FL	DOM
<a href="#">98-450 Koauka Loop 1606</a>	<a href="#">\$425,000</a>	1 & 1/0	514   \$827	0   \$inf	72	46%	16	139

Address	Tax   Maint.   Ass.	Assessed Land	Assessed Building	Assessed Total	Ratio	Year & Remodeled
<a href="#">98-450 Koauka Loop 1606</a>	\$107   \$747   \$0	\$51,800	\$314,900	\$366,700	116%	1975 & NA

[98-450 Koauka Loop 1606](#) - MLS#: [202324452](#) - Enjoy living at the HIGHLANDER in this partly furnished 1 bedroom, 1 bath home consisting of approximately 514 square feet of living space and a 72 square feet lanai. This unit includes 2 Tandem covered secured parking stalls. It's in a Great location very close to Pearlridge Shopping Center, Pali Momi Medical Center, Pearl Harbor/Hickam Air Force Base, Restaurants, Schools and Churches. This is an end unit, next to a fire exit door and trash chute. This property is being sold in "as is" condition. Appliances for this home includes a range/oven, refrigerator, dishwasher, disposal, range hood, washer/dryer and a window ac unit. Amenities for this unit include a BBQ area, Community Association Pool, Community Laundry area, Exercise Room, Meeting Room, Swimming pool, Sauna, Security Guards, Storage, Trash chute and Whirlpool. There's guest parking and street parking. The bus stop is in front of the building. **Region:** Pearl City **Neighborhood:** Pearlridge **Condition:** Above Average **Parking:** Assigned, Covered - 2, Guest, Street **Total Parking:** 2 **View:** Garden, Mountain, Other **Frontage:** Other **Pool:** **Zoning:** 12 - A-2 Medium Density Apartme **Sale Conditions:** None **Schools:** [Alvah Scott](#), [Aiea](#), [Aiea](#) \* [Request Showing](#), [Photos](#), [History](#), [Maps](#), [Deed](#), [Watch List](#), [Tax Info](#)

DOM = Days on Market, Occ. = Occupancy, FL = Floor Number