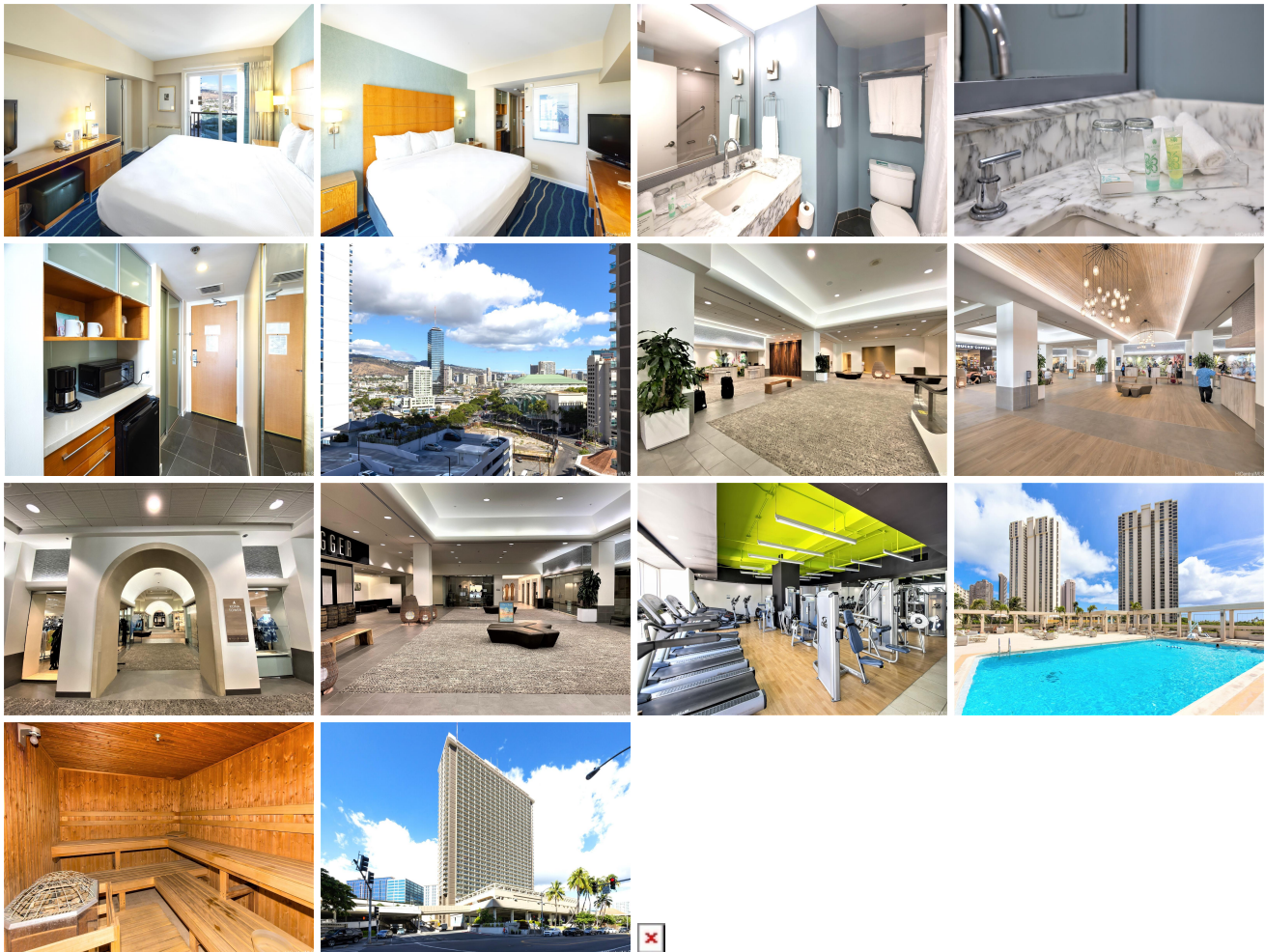


## **Ala Moana Hotel Condo 410 Atkinson Drive Unit 1337, Honolulu 96814 \* Ala Moana Hotel**

**Condo \* \$173,000**

Beds: <b>0</b>	MLS#: <b><u>202324792</u>, FS</b>	Year Built: <b>1970</b>
Bath: <b>1/0</b>	Status: <b>Active</b>	Remodeled:
Living Sq. Ft.: <b>246</b>	List Date & DOM: <b>10-31-2023 &amp; 190</b>	Total Parking: <b>0</b>
Land Sq. Ft.: <b>0</b>	Condition: <b>Above Average</b>	<a href="#">Assessed Value</a>
Lanai Sq. Ft.: <b>0</b>	Frontage:	Building: <b>\$89,100</b>
Sq. Ft. Other: <b>0</b>	Tax/Year: <b>\$173/2023</b>	Land: <b>\$60,100</b>
Total Sq. Ft. <b>246</b>	Neighborhood: <b>Ala Moana</b>	Total: <b>\$149,200</b>
Maint./Assoc. <b>\$1,314 / \$0</b>	<a href="#">Flood Zone</a> : <b>Zone AE - Tool</b>	Stories / CPR: <b>8-14 / No</b>
Parking: <b>None</b>	Frontage:	
<a href="#">Zoning</a> : <b>33 - BMX-3 Community Business M</b>	View: <b>City</b>	

**Public Remarks:** Top floor of Kona Tower! Great opportunity to own a turn key investment unit in Hawaii. This unit is managed by Ala Moana Hotel by Mantra, very popular Island-style hotel-condo. Relax by the outdoor swimming pool with a spacious deck for sunning and get refreshed in the fitness center with sauna room. Hotel features are cafes and restaurants, gift shops/newsstands, tours and activities desk, valet parking, concierge service. Great location directly connecting to Ala Moana Shopping Center. Ala Moana Beach Park is just steps away and close to the Hawaii Convention Center. Owner will be able to join Hotel Rental Program or self managing. Own this piece of paradise with solid income. **Sale Conditions:** None  
**Schools:** , , \* [Request Showing](#), [Photos](#), [History](#), [Maps](#), [Deed](#), [Watch List](#), [Tax Info](#)



Address	Price	Bd & Bth	Living / Avg.	Land   Avg.	Lanai	Occ.	FL	DOM
<a href="#">410 Atkinson Drive 1337</a>	<a href="#">\$173,000</a>	0 & 1/0	246   \$703	0   \$inf	0	0%	13	190

Address	Tax   Maint.   Ass.	Assessed Land	Assessed Building	Assessed Total	Ratio	Year & Remodeled
<a href="#">410 Atkinson Drive 1337</a>	\$173   \$1,314   \$0	\$60,100	\$89,100	\$149,200	116%	1970 & NA

[410 Atkinson Drive 1337](#) - MLS#: [202324792](#) - Top floor of Kona Tower! Great opportunity to own a turn key investment unit in Hawaii. This unit is managed by Ala Moana Hotel by Mantra, very popular Island-style hotel-condo. Relax by the outdoor swimming pool with a spacious deck for sunning and get refreshed in the fitness center with sauna room. Hotel features are cafes and restaurants, gift shops/newsstands, tours and activities desk, valet parking, concierge service. Great location directly connecting to Ala Moana Shopping Center. Ala Moana Beach Park is just steps away and close to the Hawaii Convention Center. Owner will be able to join Hotel Rental Program or self managing. Own this piece of paradise with solid income. **Region:** Metro **Neighborhood:** Ala Moana **Condition:** Above Average **Parking:** None **Total Parking:** 0 **View:** City **Frontage:** **Pool:** **Zoning:** 33 - BMX-3 Community Business M **Sale Conditions:** None **Schools:** , , \* [Request Showing](#), [Photos](#), [History](#), [Maps](#), [Deed](#), [Watch List](#), [Tax Info](#)

DOM = Days on Market, Occ. = Occupancy, FL = Floor Number