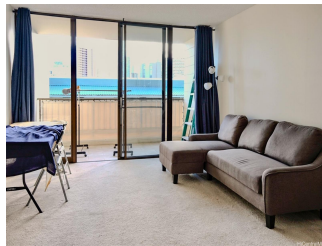


Hausten 739 Hausten Street Unit 304, Honolulu 96826 * Hausten * \$399,000

Beds: **1** MLS#: **202324819, FS** Year Built: **1975**
 Bath: **1/0** Status: **Active** Remodeled:
 Living Sq. Ft.: **615** List Date & DOM: **11-01-2023 & 193** Total Parking: **1**
 Land Sq. Ft.: **14,375** Condition: **Above Average** [Assessed Value](#)
 Lanai Sq. Ft.: **0** Frontage:
 Sq. Ft. Other: **0** Tax/Year: **\$114/2023** Building: **\$360,400**
 Total Sq. Ft. **615** Neighborhood: **Moiliili** Land: **\$29,900**
 Maint./Assoc. **\$710 / \$0** [Flood Zone](#): **Zone X - Tool** Total: **\$390,300**
 Parking: **Covered - 1, Guest, Street** Frontage:
[Zoning](#): **12 - A-2 Medium Density Apartme** View: **City, Mountain**

Public Remarks: Discover a unique living experience at The Hausten in the heart of Moiliili! This split-level condo, situated in a secure, pet-friendly building, offers a spacious living area and an open kitchen on the main level, with the bedroom and bathroom upstairs providing a private retreat. Enjoy the lanai for relaxation, and the convenience of an in-unit washer/dryer and one covered parking stall. Conveniently located near the University of Hawaii at Manoa, Waikiki, Ala Moana Mall, eateries, and with easy freeway access. Don't miss this unique opportunity! Unit is sold AS IS. **Sale Conditions:** None **Schools:** , , * [Request Showing](#), [Photos](#), [History](#), [Maps](#), [Deed](#), [Watch List](#), [Tax Info](#)



Address	Price	Bd & Bth	Living / Avg.	Land Avg.	Lanai	Occ.	FL	DOM
739 Hausten Street 304	\$399,000	1 & 1/0	615 \$649	14,375 \$28	0	58%	2	193

Address	Tax Maint. Ass.	Assessed Land	Assessed Building	Assessed Total	Ratio	Year & Remodeled
739 Hausten Street 304	\$114 \$710 \$0	\$29,900	\$360,400	\$390,300	102%	1975 & NA

[739 Hausten Street 304](#) - MLS#: [202324819](#) - Discover a unique living experience at The Hausten in the heart of Moiliili! This split-level condo, situated in a secure, pet-friendly building, offers a spacious living area and an open kitchen on the main level, with the bedroom and bathroom upstairs providing a private retreat. Enjoy the lanai for relaxation, and the convenience of an in-unit washer/dryer and one covered parking stall. Conveniently located near the University of Hawaii at Manoa, Waikiki, Ala Moana Mall, eateries, and with easy freeway access. Don't miss this unique opportunity! Unit is sold AS IS. **Region:** Metro **Neighborhood:** Moiliili **Condition:** Above Average **Parking:** Covered - 1, Guest, Street **Total Parking:** 1 **View:** City, Mountain **Frontage:** **Pool:** **Zoning:** 12 - A-2 Medium Density Apartme **Sale Conditions:** None **Schools:** , , * [Request Showing](#), [Photos](#), [History](#), [Maps](#), [Deed](#), [Watch List](#), [Tax Info](#)

DOM = Days on Market, Occ. = Occupancy, FL = Floor Number