

Royal Iolani 581 Kamoku Street Unit 1004, Honolulu 96826 * Royal Iolani * \$593,000 *

Originally \$595,000

Beds: **1**

MLS#: **202324865, FS**

Year Built: **1978**

Bath: **1/0**

Status: **Active Under Contract**

Remodeled:

Living Sq. Ft.: **792**

List Date & DOM: **11-02-2023 & 178**

Total Parking: **1**

Land Sq. Ft.: **119,006**

Condition: **Excellent**

[Assessed Value](#)

Lanai Sq. Ft.: **293**

Frontage:

Building: **\$485,800**

Sq. Ft. Other: **0**

Tax/Year: **\$130/2023**

Land: **\$58,300**

Total Sq. Ft. **1,085**

Neighborhood: **Kapiolani**

Total: **\$544,100**

Maint./Assoc. **\$1,158 / \$0**

[Flood Zone](#): **Zone AE - Tool**

Stories / CPR: / **No**

Parking: **Covered - 1, Guest**

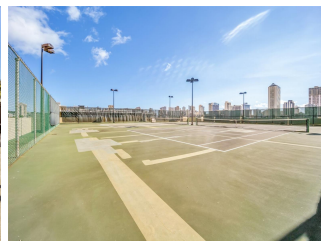
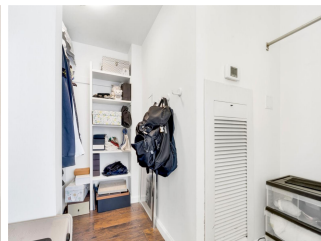
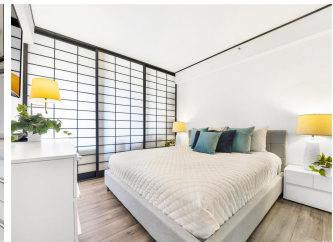
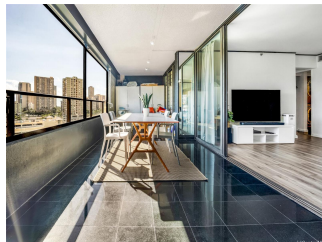
Frontage:

[Zoning](#): **13 - A-3 High Density Apartment**

View: **City, Diamond Head, Sunrise**

Public Remarks: Stunning views of Diamond Head from this extra spacious, 1 bedroom 1 bath unit in the Ewa Tower of the Royal Iolani. The LARGE 293 sqft enclosed lanai is a perfect place to relax and enjoy your morning coffee while taking in the gorgeous views. The unit has been tastefully updated with new laminate floors in 2020 and a fully remodeled kitchen in 2018. It also features a full size washer & dryer, Central Air Conditioning, and 1 covered parking stall in the secured parking garage. This is such a highly desired building as it is pet friendly, has 24 guest parking stalls, and tons of amenities including, a pool, jacuzzi, BBQ, tennis courts, EV charging station, sauna, workout room, and party areas to entertain guests. The location is also hard to beat. Overlooking Iolani School and nearby Waikiki, Ala Moana Center, UH, and freeway access. **Sale**

Conditions: None **Schools:** [Ala Wai](#), [Washington](#), [Kaimuki](#) * [Request Showing](#), [Photos](#), [History](#), [Maps](#), [Deed](#), [Watch List](#), [Tax Info](#)





Address	Price	Bd & Bth	Living / Avg.	Land Avg.	Lanai	Occ.	FL	DOM
581 Kamoku Street 1004	\$593,000	1 & 1/0	792 \$749	119,006 \$5	293	60%	10	178

Address	Tax Maint. Ass.	Assessed Land	Assessed Building	Assessed Total	Ratio	Year & Remodeled
581 Kamoku Street 1004	\$130 \$1,158 \$0	\$58,300	\$485,800	\$544,100	109%	1978 & NA

[581 Kamoku Street 1004](#) - MLS#: [202324865](#) - Original price was \$595,000 - Stunning views of Diamond Head from this extra spacious, 1 bedroom 1 bath unit in the Ewa Tower of the Royal Iolani. The LARGE 293 sqft enclosed lanai is a perfect place to relax and enjoy your morning coffee while taking in the gorgeous views. The unit has been tastefully updated with new laminate floors in 2020 and a fully remodeled kitchen in 2018. It also features a full size washer & dryer, Central Air Conditioning, and 1 covered parking stall in the secured parking garage. This is such a highly desired building as it is pet friendly, has 24 guest parking stalls, and tons of amenities including, a pool, jacuzzi, BBQ, tennis courts, EV charging station, sauna, workout room, and party areas to entertain guests. The location is also hard to beat. Overlooking Iolani School and nearby Waikiki, Ala Moana Center, UH, and freeway access. **Region:** Metro **Neighborhood:** Kapiolani **Condition:** Excellent **Parking:** Covered - 1, Guest **Total Parking:** 1 **View:** City, Diamond Head, Sunrise **Frontage:** **Pool:** **Zoning:** 13 - A-3 High Density Apartment **Sale Conditions:** None **Schools:** [Ala Wai](#), [Washington](#), [Kaimuki](#) * [Request Showing](#), [Photos](#), [History](#), [Maps](#), [Deed](#), [Watch List](#), [Tax Info](#)

DOM = Days on Market, Occ. = Occupancy, FL = Floor Number