

# Chateau Waikiki 411 Hobron Lane Unit 2908, Honolulu 96815 \* Chateau Waikiki \* \$490,000

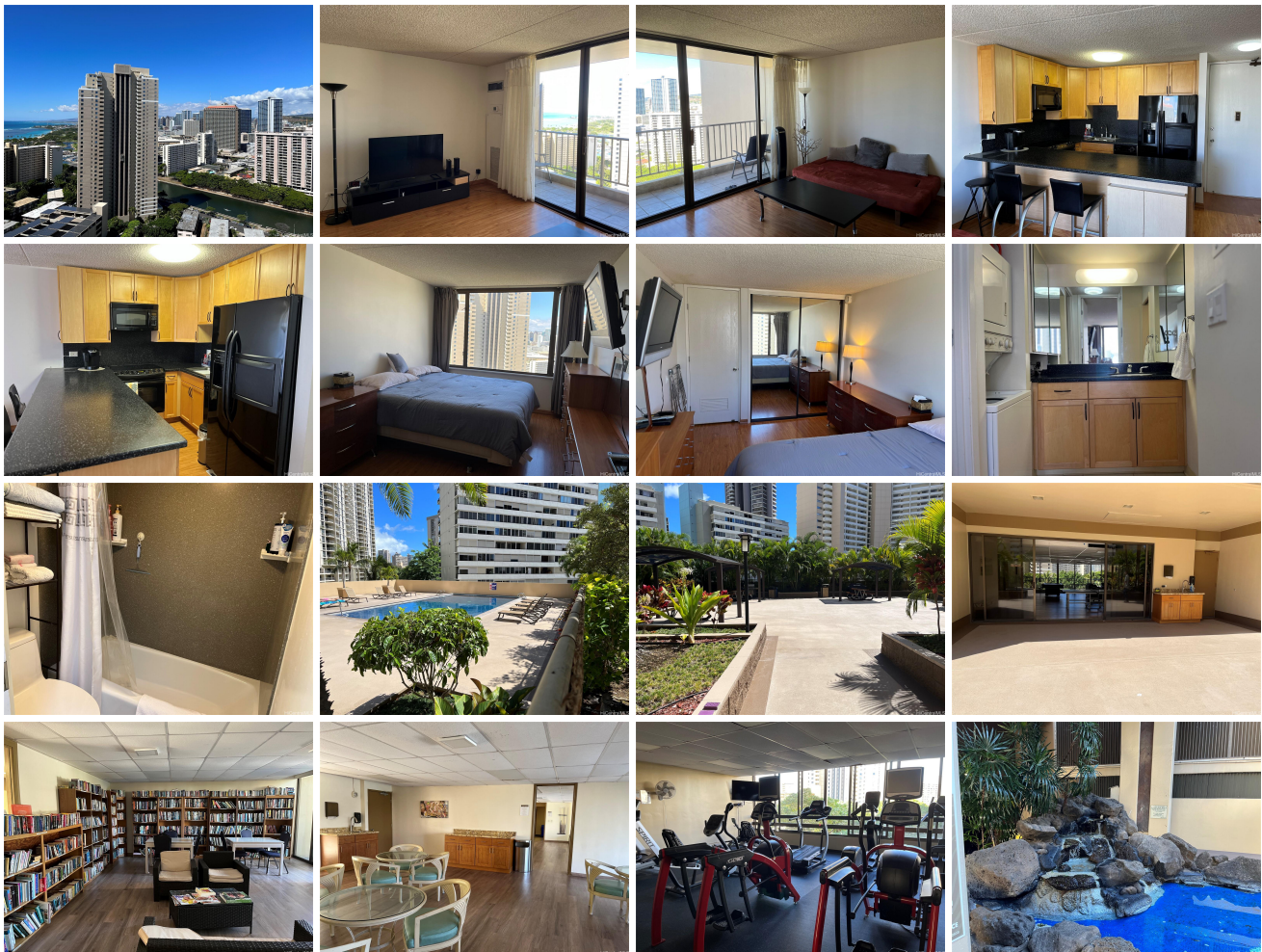
\* Originally \$500,000

Beds: <b>1</b>	MLS#: <b>202324931, FS</b>	Year Built: <b>1974</b>
Bath: <b>1/0</b>	Status: <b>Active</b>	Remodeled: <b>2008</b>
Living Sq. Ft.: <b>540</b>	List Date & DOM: <b>11-03-2023 &amp; 191</b>	Total Parking: <b>1</b>
Land Sq. Ft.: <b>70,611</b>	Condition: <b>Above Average</b>	<a href="#">Assessed Value</a>
Lanai Sq. Ft.: <b>60</b>	Frontage:	Building: <b>\$407,500</b>
Sq. Ft. Other: <b>0</b>	Tax/Year: <b>\$134/2023</b>	Land: <b>\$51,300</b>
Total Sq. Ft. <b>600</b>	Neighborhood: <b>Waikiki</b>	Total: <b>\$458,800</b>
Maint./Assoc. <b>\$872 / \$0</b>	<a href="#">Flood Zone</a> : <b>Zone AE - Tool</b>	Stories / CPR: <b>21+ / No</b>
Parking: <b>Assigned, Covered - 1, Garage, Guest</b>	Frontage:	

[Zoning](#): **X2 - Apartment Precinct**

View: **City, Ocean**

**Public Remarks:** Enjoy lovely sunsets over the ocean from the lanai of this well-kept 29th floor 1 bedroom, 1 bath unit in the highly desirable Chateau Waikiki condominium. Located at the entrance to Waikiki and minutes away from Waikiki and Ala Moana Beaches, Ala Moana Park, a delightful selection of restaurants and world class shopping. The resort-like property includes pool, gym/weight rooms, saunas, BBQ areas, library, party room and 24-hour security. Includes 1 covered parking and a storage locker on same floor. Air Conditioning, electricity and hot water are included in the maintenance fee. Owner has paid off the special assessment that was effective October 1st and will end on December 2024. **Sale Conditions:** None  
**Schools:** , , \* [Request Showing](#), [Photos](#), [History](#), [Maps](#), [Deed](#), [Watch List](#), [Tax Info](#)



Address	Price	Bd & Bth	Living / Avg.	Land   Avg.	Lanai	Occ.	FL	DOM
<a href="#">411 Hobron Lane 2908</a>	<b>\$490,000</b>	1 & 1/0	540   \$907	70,611   \$7	60	36%	29	191

Address	Tax   Maint.   Ass.	Assessed Land	Assessed Building	Assessed Total	Ratio	Year & Remodeled
<a href="#">411 Hobron Lane 2908</a>	\$134   \$872   \$0	\$51,300	\$407,500	\$458,800	107%	1974 & 2008

[411 Hobron Lane 2908](#) - MLS#: [202324931](#) - Original price was \$500,000 - Enjoy lovely sunsets over the ocean from the lanai of this well-kept 29th floor 1 bedroom, 1 bath unit in the highly desirable Chateau Waikiki condominium. Located at the entrance to Waikiki and minutes away from Waikiki and Ala Moana Beaches, Ala Moana Park, a delightful selection of restaurants and world class shopping. The resort-like property includes pool, gym/weight rooms, saunas, BBQ areas, library, party room and 24-hour security. Includes 1 covered parking and a storage locker on same floor. Air Conditioning, electricity and hot water are included in the maintenance fee. Owner has paid off the special assessment that was effective October 1st and will end on December 2024. **Region:** Metro **Neighborhood:** Waikiki **Condition:** Above Average **Parking:** Assigned, Covered - 1, Garage, Guest **Total Parking:** 1 **View:** City, Ocean **Frontage:** **Pool:** **Zoning:** X2 - Apartment Precinct **Sale Conditions:** None **Schools:** , , \* [Request Showing](#), [Photos](#), [History](#), [Maps](#), [Deed](#), [Watch List](#), [Tax Info](#)

DOM = Days on Market, Occ. = Occupancy, FL = Floor Number