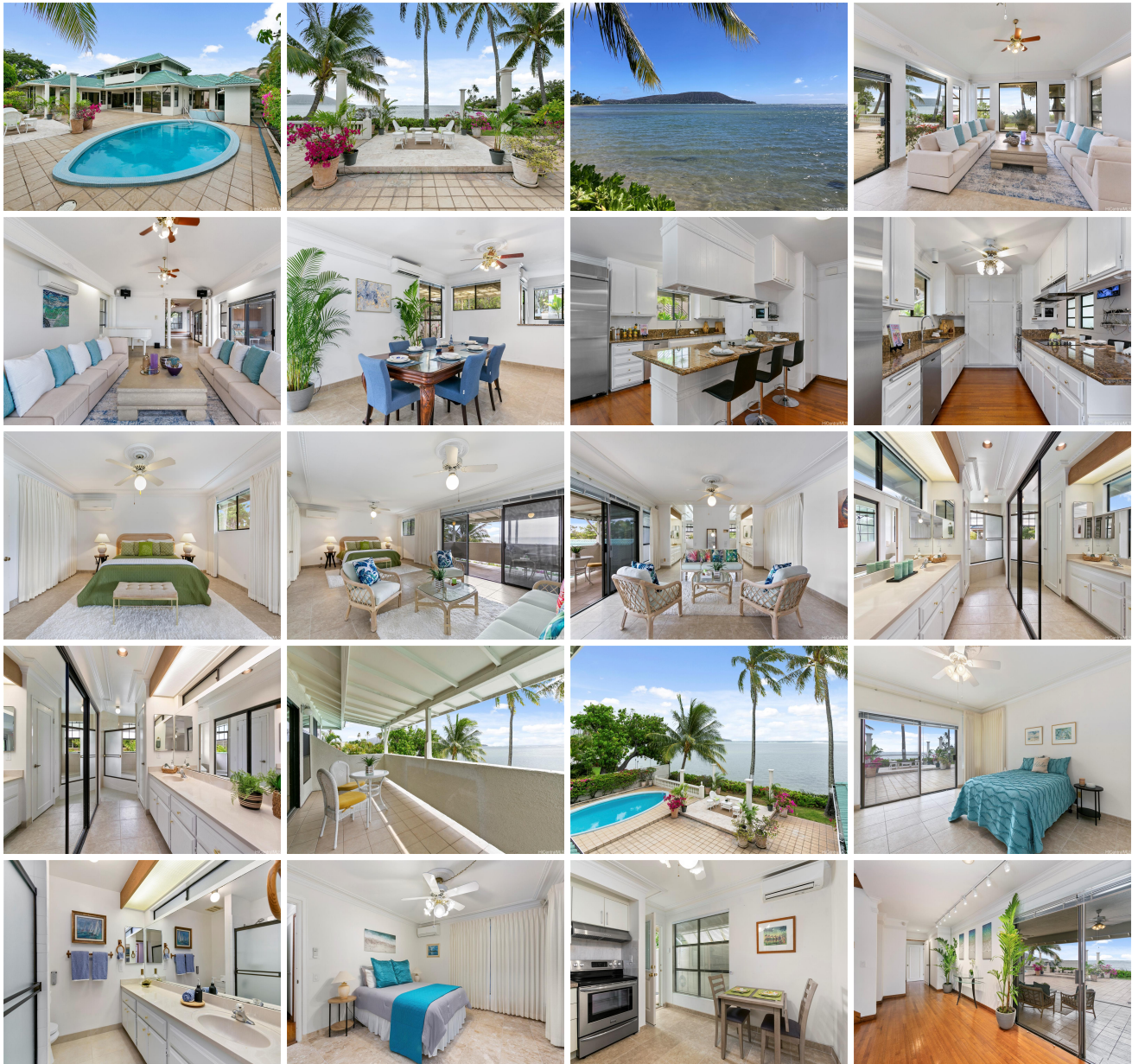


**5795 Kalanianaʻole Highway, Honolulu 96821 \* \* \$3,950,000 \* Originally \$4,688,000**

Beds: <b>4</b>	MLS#: <b><u>202325311</u>, FS</b>	Year Built: <b>1980</b>
Bath: <b>4/1</b>	Status: <b>Active</b>	Remodeled:
Living Sq. Ft.: <b>3,812</b>	List Date & DOM: <b>11-09-2023 &amp; 191</b>	Total Parking: <b>6</b>
Land Sq. Ft.: <b>14,125</b>	Condition: <b>Above Average</b>	<a href="#">Assessed Value</a>
Lanai Sq. Ft.: <b>480</b>	Frontage: <b>Ocean, Waterfront</b>	Building: <b>\$426,000</b>
Sq. Ft. Other: <b>0</b>	Tax/Year: <b>\$775/2023</b>	Land: <b>\$2,471,000</b>
Total Sq. Ft. <b>4,292</b>	Neighborhood: <b>Niu Beach</b>	Total: <b>\$2,897,000</b>
Maint./Assoc. <b>\$0 / \$0</b>	<a href="#">Flood Zone</a> : <b>Zone VE - Tool</b>	Stories / CPR: <b>Two / No</b>
Parking: <b>3 Car+, Driveway, Garage</b>	Frontage: <b>Ocean, Waterfront</b>	
<a href="#">Zoning</a> : <b>03 - R10 - Residential District</b>	View: <b>Ocean, Sunrise, Sunset</b>	

**Public Remarks:** View ! View ! View ! Spectacular views of the ocean and Koko Head from this beautiful beachfront/oceanfront home ... Property is located midway between Kahala and Hawaii Kai and a short drive from Waikiki and Sandy Beach. It is easily accessible from the freeway. Enter through electronic gates to a courtyard with double garage, each with two parking spaces. Nice, big home finished with lots of glass and marble ...a very open floor plan .. living, dining, and kitchen open out to a covered lanai, swimming pool, garden and the ocean beyond. Practical floor plan with 3 rooms on the main level, a secondary suite plus two additional bedrooms - each leading out to the lanai. Upstairs is a spacious primary bedroom suite with an equally spacious bathroom. Enjoy your morning coffee from your lanai as you watch the sunrise. A chance to own an oceanfront/sandy beachfront property for under \$ 4 MM in Hawaii !! **Sale Conditions:** None **Schools:** , , \* [Request Showing](#), [Photos](#), [History](#), [Maps](#), [Deed](#), [Watch List](#), [Tax Info](#)





Address	Price	Bd & Bth	Living / Avg.	Land   Avg.	Lanai	Occ.	FL	DOM
<a href="#">5795 Kalanianaʻole Highway</a>	<b>\$3,950,000</b>	4 & 4/1	3,812   \$1,036	14,125   \$280	480	0%	0	191

Address	Tax   Maint.   Ass.	Assessed Land	Assessed Building	Assessed Total	Ratio	Year & Remodeled
<a href="#">5795 Kalanianaʻole Highway</a>	\$775   \$0   \$0	\$2,471,000	\$426,000	\$2,897,000	136%	1980 & NA

<p><a href="#">5795 Kalanianaʻole Highway</a> - MLS#: <a href="#">202325311</a> - Original price was \$4,688,000 - View ! View ! View ! Spectacular views of the ocean and Koko Head from this beautiful beachfront/oceanfront home ... Property is located midway between Kahala and Hawaii Kai and a short drive from Waikiki and Sandy Beach. It is easily accessible from the freeway. Enter through electronic gates to a courtyard with double garage, each with two parking spaces. Nice, big home finished with lots of glass and marble ...a very open floor plan .. living, dining, and kitchen open out to a covered lanai, swimming pool, garden and the ocean beyond. Practical floor plan with 3 rooms on the main level, a secondary suite plus two additional bedrooms - each leading out to the lanai. Upstairs is a spacious primary bedroom suite with an equally spacious bathroom. Enjoy your morning coffee from your lanai as you watch the sunrise. A chance to own an oceanfront/sandy beachfront property for under \$ 4 MM in Hawaii !! <b>Region:</b> Diamond Head <b>Neighborhood:</b> Niu Beach <b>Condition:</b> Above Average <b>Parking:</b> 3 Car+, Driveway, Garage <b>Total Parking:</b> 6 <b>View:</b> Ocean, Sunrise, Sunset <b>Frontage:</b> Ocean,Waterfront <b>Pool:</b> Heated,In Ground <b>Zoning:</b> 03 - R10 - Residential District <b>Sale Conditions:</b> None <b>Schools:</b> , , * <a href="#">Request Showing</a>, <a href="#">Photos</a>, <a href="#">History</a>, <a href="#">Maps</a>, <a href="#">Deed</a>, <a href="#">Watch List</a>, <a href="#">Tax Info</a></p>						
---	--	--	--	--	--	--

DOM = Days on Market, Occ. = Occupancy, FL = Floor Number