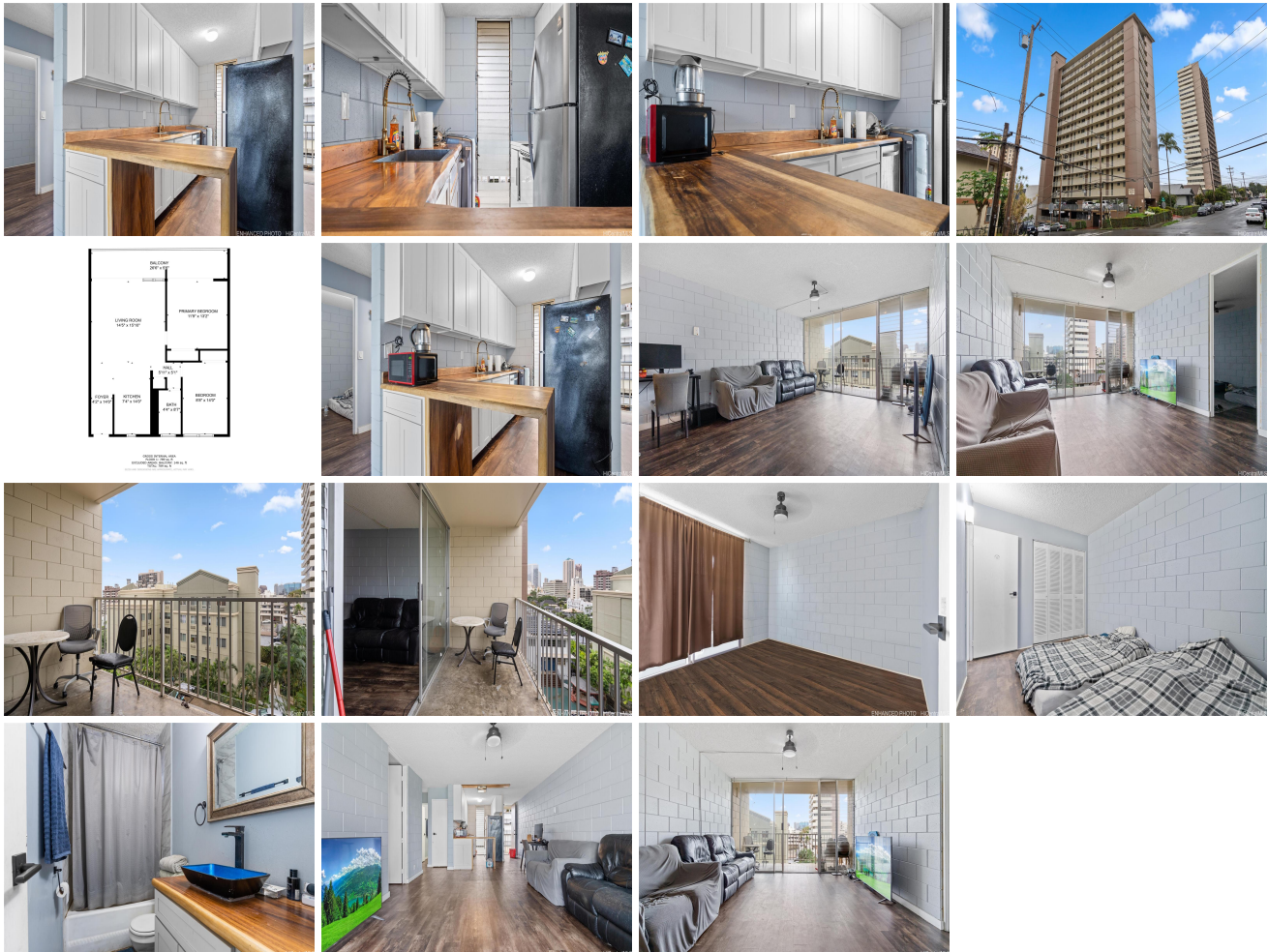


Victoria Towers 1420 Victoria Street Unit 702, Honolulu 96822 * Victoria Towers *

\$149,000 * Originally \$158,000

Beds: 2	MLS#: <u>202325461</u> , LH	Year Built: 1974
Bath: 1/0	Status: Active	Remodeled: 2020
Living Sq. Ft.: 774	List Date & DOM: 12-06-2023 & 157	Total Parking: 1
Land Sq. Ft.: 39,378	Condition: Average	Assessed Value
Lanai Sq. Ft.: 156	Frontage: Other	Building: \$224,800
Sq. Ft. Other: 0	Tax/Year: \$102/2023	Land: \$114,900
Total Sq. Ft. 930	Neighborhood: Punchbowl Area	Total: \$339,700
Maint./Assoc. \$877 / \$0	Flood Zone : Zone X - <u>Tool</u>	Stories / CPR: 15-20 / No
Parking: Garage, Open - 1, Secured Entry	Frontage: Other	
Zoning : 12 - A-2 Medium Density Apartme	View: City, Mountain	

Public Remarks: Enjoy lots of natural light! Unit is conveniently located within the gated Victoria Towers. Nearby many attractions! The space includes one secured parking stall insided of the gated garage. With a resident managed on site, accessing your unit is secure with codes, locks, gates and keys. 3 years ago the space was updated! The large windows allow for a great breeze and natural light. Feel the wind all around your new space. Enjoy upgrades like new carpetless floors. Pet friendly with wide city views. The spacious bedrooms make this space very comfortable! Enjoy being near unique spaces like the Art Museum, and the Blaisdell Arena. Easy access to Downtown, Queen's Hospital, shopping, bus stops, a pet relief area and well maintained parking and floral grounds. This leasehold is a great and affordable. The views are vast and vibrant which can boost happiness and creativity. Relish is affordable home ownership. This move in ready condominium is easy to show and the monthly fees include water, sewer and internet. The city life is made ultra comfortable in your 2 bedroom Victoria Tower 7th floor oasis. **Sale Conditions:** None **Schools:** , , [Request Showing](#), [Photos](#), [History](#), [Maps](#), [Deed](#), [Watch List](#), [Tax Info](#)



Address	Price	Bd & Bth	Living / Avg.	Land Avg.	Lanai	Occ.	FL	DOM
1420 Victoria Street 702	<u>\$149,000 LH</u>	2 & 1/0	774 \$193	39,378 \$4	156	65%	7	157

Address	Tax Maint. Ass.	Assessed Land	Assessed Building	Assessed Total	Ratio	Year & Remodeled
1420 Victoria Street 702	\$102 \$877 \$0	\$114,900	\$224,800	\$339,700	44%	1974 & 2020

[1420 Victoria Street 702](#) - MLS#: [202325461](#) - Original price was \$158,000 - Enjoy lots of natural light! Unit is conveniently located within the gated Victoria Towers. Nearby many attractions! The space includes one secured parking stall insided of the gated garage. With a resident managed on site, accessing your unit is secure with codes, locks, gates and keys. 3 years ago the space was updated! The large windows allow for a great breeze and natural light. Feel the wind all around your new space. Enjoy upgrades like new carpetless floors. Pet friendly with wide city views. The spacious bedrooms make this space very comfortable! Enjoy being near unique spaces like the Art Museum, and the Blaisdell Arena. Easy access to Downtown, Queen's Hospital, shopping, bus stops, a pet relief area and well maintained parking and floral grounds. This leasehold is a great and affordable. The views are vast and vibrant which can boost happiness and creativity. Relish is affordable home ownership. This move in ready condominium is easy to show and the monthly fees include water, sewer and internet. The city life is made ultra comfortable in your 2 bedroom Victoria Tower 7th floor oasis. **Region:** Metro **Neighborhood:** Punchbowl Area **Condition:** Average **Parking:** Garage, Open - 1, Secured Entry **Total Parking:** 1 **View:** City, Mountain **Frontage:** Other **Pool:** **Zoning:** 12 - A-2 Medium Density Apartme **Sale Conditions:** None **Schools:** , , * [Request Showing](#), [Photos](#), [History](#), [Maps](#), [Deed](#), [Watch List](#), [Tax Info](#)

DOM = Days on Market, Occ. = Occupancy, FL = Floor Number