

2987 Kalakaua 2987 Kalakaua Avenue Unit 604, Honolulu 96815 * 2987 Kalakaua ***\$750,000**

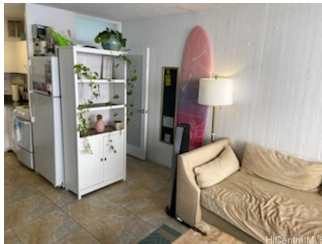
Beds: **0**
 Bath: **1/0**
 Living Sq. Ft.: **386**
 Land Sq. Ft.: **15,377**
 Lanai Sq. Ft.: **59**
 Sq. Ft. Other: **0**
 Total Sq. Ft. **445**
 Maint./Assoc. **\$543 / \$0**
 Parking: **Assigned**

MLS#: **202325573, FS**
 Status: **Active**
 List Date & DOM: **01-05-2024 & 124**
 Condition: **Above Average**
 Frontage: **Ocean**
 Tax/Year: **\$173/2023**
 Neighborhood: **Diamond Head**
 Flood Zone: **Zone VE - Tool**

Year Built: **1953**
 Remodeled:
 Total Parking: **1**
[Assessed Value](#)
 Building: **\$493,100**
 Land: **\$101,100**
 Total: **\$594,200**
 Stories / CPR: **4-7 / No**

Frontage: **Ocean****Zoning: 12 - A-2 Medium Density Apartme**View: **Coastline, Diamond Head, Ocean, Sunrise, Sunset**

Public Remarks: Would you like to hear about a well kept secret? A glimpse of paradise - we have a studio that has a breathtaking ocean view right from the large and spacious lanai. The gentle trade winds breeze through the apartment keeping it cool and relaxing. At times, you might check to see if it is a dream. Sunsets and surf are seen right from the lanai. Surfers can be seen gliding on the waves. Its location is on the world famous Gold Coast near the Outrigger Canoe Club. There is a private gate to the beach and an outdoor shower which is right in front of the ocean where the waves are are glistening. Located just minutes from Diamond Head and right across from the infamous Kapi'olani Park. It is close to Michel's at the Colony Surf Restaurant, Kaimana Beach Hotel, and just minutes from Kahala. The parking stall is located on the top level, Stall No. 4. **Sale Conditions:** None **Schools:** [Jefferson](#), [Washington](#), [Kaimuki](#) * [Request Showing](#), [Photos](#), [History](#), [Maps](#), [Deed](#), [Watch List](#), [Tax Info](#)



Address	Price	Bd & Bth	Living / Avg.	Land Avg.	Lanai	Occ.	FL	DOM
2987 Kalakaua Avenue 604	\$750,000	0 & 1/0	386 \$1,943	15,377 \$49	59	24%	6	124

Address	Tax Maint. Ass.	Assessed Land	Assessed Building	Assessed Total	Ratio	Year & Remodeled
2987 Kalakaua Avenue 604	\$173 \$543 \$0	\$101,100	\$493,100	\$594,200	126%	1953 & NA

[2987 Kalakaua Avenue 604](#) - MLS#: [202325573](#) - Would you like to hear about a well kept secret? A glimpse of paradise - we have a studio that has a breathtaking ocean view right from the large and spacious lanai. The gentle trade winds breeze through the apartment keeping it cool and relaxing. At times, you might check to see if it is a dream. Sunsets and surf are seen right from the lanai. Surfers can be seen gliding on the waves. Its location is on the world famous Gold Coast near the Outrigger Canoe Club. There is a private gate to the beach and an outdoor shower which is right in front of the ocean where the waves are are glistening. Located just minutes from Diamond Head and right across from the infamous Kapi'olani Park. It is close to Michel's at the Colony Surf Restaurant, Kaimana Beach Hotel, and just minutes from Kahala. The parking stall is located on the top level, Stall No. 4. **Region:** Diamond Head **Neighborhood:** Diamond Head **Condition:** Above Average **Parking:** Assigned **Total Parking:** 1 **View:** Coastline, Diamond Head, Ocean, Sunrise, Sunset **Frontage:** Ocean **Pool:** **Zoning:** 12 - A-2 Medium Density Apartme **Sale Conditions:** None **Schools:** [Jefferson](#), [Washington](#), [Kaimuki](#) * [Request Showing](#), [Photos](#), [History](#), [Maps](#), [Deed](#), [Watch List](#), [Tax Info](#)

DOM = Days on Market, Occ. = Occupancy, FL = Floor Number