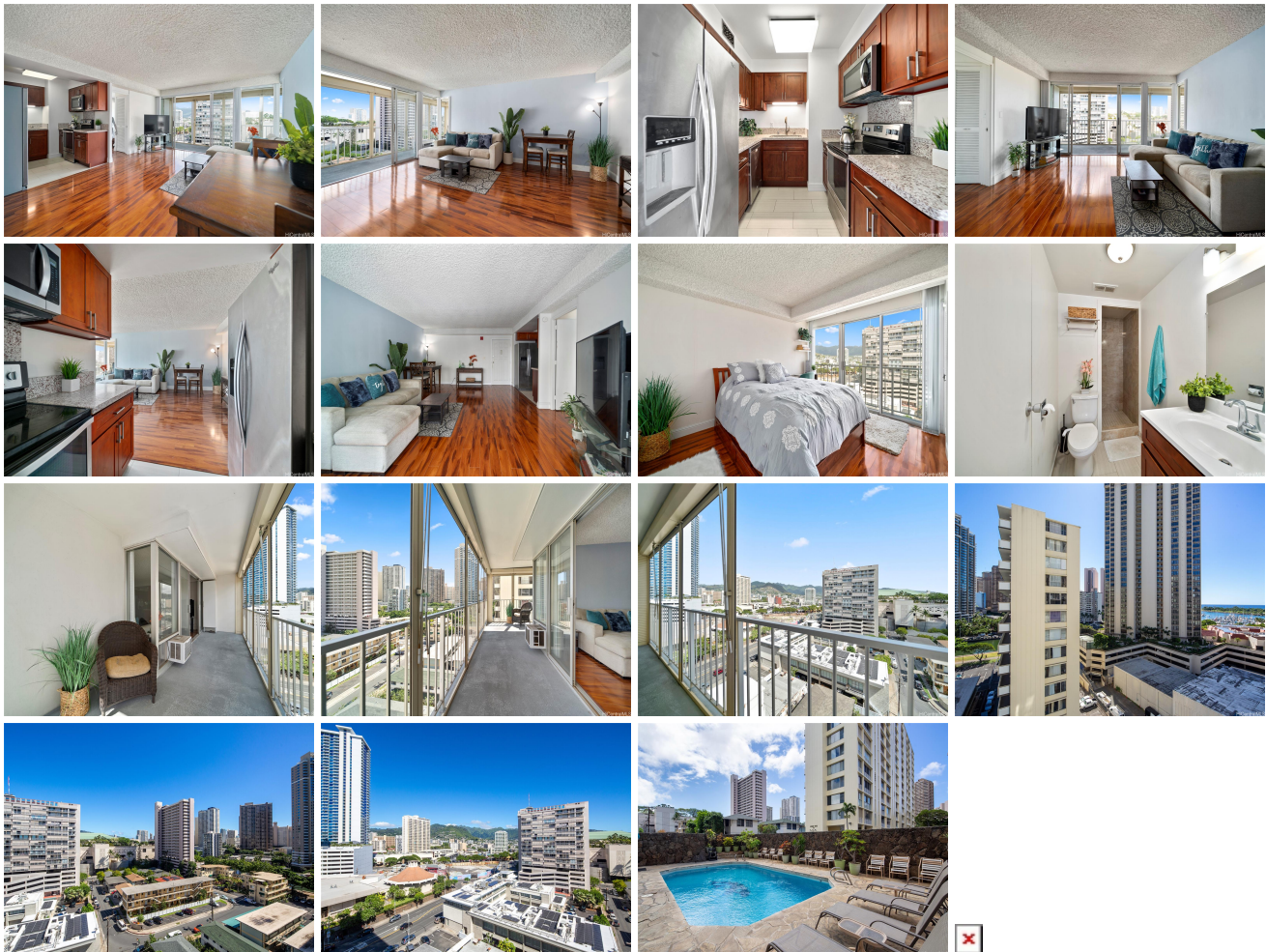


Sunset Towers 419 Atkinson Drive Unit 1103, Honolulu 96814 * Sunset Towers * \$399,000

* Originally \$425,000

Beds: 1	MLS#: 202325702, FS	Year Built: 1969
Bath: 1/0	Status: Active Under Contract	Remodeled: 2016
Living Sq. Ft.: 626	List Date & DOM: 11-28-2023 & 161	Total Parking: 1
Land Sq. Ft.: 17,860	Condition: Excellent, Above Average	Assessed Value
Lanai Sq. Ft.: 203	Frontage:	Building: \$396,200
Sq. Ft. Other: 0	Tax/Year: \$90/2022	Land: \$28,700
Total Sq. Ft. 829	Neighborhood: Ala Moana	Total: \$424,900
Maint./Assoc. \$1,239 / \$0	Flood Zone : Zone AE - Tool	Stories / CPR: 8-14 / No
Parking: Assigned, Covered - 1, Garage	Frontage:	
Zoning : 12 - A-2 Medium Density Apartme	View: City, Mountain	

Public Remarks: WOW WHAT A DEAL!!! This fabulous condo is perfect for those looking to live the urban lifestyle. As you step into this fully furnished unit, you'll be immediately captivated by the breathtaking city views that greet you through the large windows. The condo's interior underwent a renovation in 2016. The kitchen features sleek quartz countertops & stainless steel appliances adding a touch of sophistication to the space. The bedroom is a tranquil retreat with a comfortable queen size bed & ample storage space for your belongings. The renovated bathroom features a walk in shower & also combines functionality with an included washer/dryer. When the outdoors are calling, you will love the expansive lanai with plenty of outdoor living space & rolling shutters for extra privacy or a weather barrier. The oversized parking stall is sure to fit your car & don't overlook the additional storage space also included with this condo and found in the garage! Whether your looking for your primary residence, a turn key investment property or a vacation home away from home this condo has it all and provides a truly exceptional living experience. **Sale Conditions:** None **Schools:** , , * [Request Showing](#), [Photos](#), [History](#), [Maps](#), [Deed](#), [Watch List](#), [Tax Info](#)



Address	Price	Bd & Bth	Living / Avg.	Land Avg.	Lanai	Occ.	FL	DOM
419 Atkinson Drive 1103	\$399,000	1 & 1/0	626 \$637	17,860 \$22	203	51%	11	161

Address	Tax Maint. Ass.	Assessed Land	Assessed Building	Assessed Total	Ratio	Year & Remodeled
419 Atkinson Drive 1103	\$90 \$1,239 \$0	\$28,700	\$396,200	\$424,900	94%	1969 & 2016

[419 Atkinson Drive 1103](#) - MLS#: [202325702](#) - Original price was \$425,000 - WOW WHAT A DEAL!!! This fabulous condo is perfect for those looking to live the urban lifestyle. As you step into this fully furnished unit, you'll be immediately captivated by the breathtaking city views that greet you through the large windows. The condo's interior underwent a renovation in 2016. The kitchen features sleek quartz countertops & stainless steel appliances adding a touch of sophistication to the space. The bedroom is a tranquil retreat with a comfortable queen size bed & ample storage space for your belongings. The renovated bathroom features a walk in shower & also combines functionality with an included washer/dryer. When the outdoors are calling, you will love the expansive lanai with plenty of outdoor living space & rolling shutters for extra privacy or a weather barrier. The oversized parking stall is sure to fit your car & don't overlook the additional storage space also included with this condo and found in the garage! Whether you're looking for your primary residence, a turn key investment property or a vacation home away from home this condo has it all and provides a truly exceptional living experience.

Region: Metro **Neighborhood:** Ala Moana **Condition:** Excellent, Above Average **Parking:** Assigned, Covered - 1, Garage **Total Parking:** 1 **View:** City, Mountain **Frontage:** **Pool:** **Zoning:** 12 - A-2 Medium Density Apartme **Sale Conditions:** None **Schools:** , , * [Request Showing](#), [Photos](#), [History](#), [Maps](#), [Deed](#), [Watch List](#), [Tax Info](#)

DOM = Days on Market, Occ. = Occupancy, FL = Floor Number