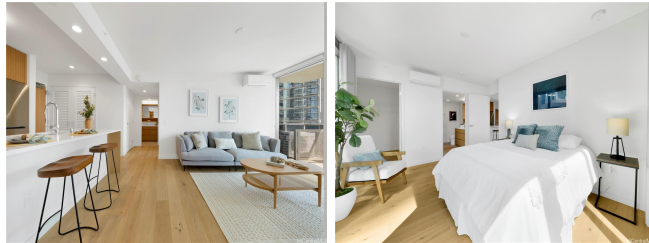


Sky Ala Moana West 1388 Kapiolani Boulevard Unit 1401, Honolulu 96814 * Sky Ala Moana West * \$1,248,000 * Originally \$1,399,000

Beds: 2	MLS#: 202325999, FS	Year Built: 2023
Bath: 2/0	Status: Active Under Contract	Remodeled:
Living Sq. Ft.: 901	List Date & DOM: 12-01-2023 & 125	Total Parking: 2
Land Sq. Ft.: 0	Condition: Excellent	Assessed Value
Lanai Sq. Ft.: 91	Frontage: Ocean	Building: \$302,400
Sq. Ft. Other: 0	Tax/Year: \$106/2023	Land: \$61,800
Total Sq. Ft. 992	Neighborhood: Holiday Mart	Total: \$364,200
Maint./Assoc. \$1,182 / \$0	Flood Zone : Zone X - Tool	Stories / CPR: 21+ / No
Parking: Assigned, Covered - 2, Secured Entry	Frontage: Ocean	
Zoning : 33 - BMX-3 Community Business M	View: City, Mountain, Ocean	

Public Remarks: Sky Ala Moana West, Brand New condo, most desirable Premium stack "01" corner unit with 2 bedrooms, 2 bathrooms, 2 parking stalls, a walk-in closet and storage. Beautiful ocean and amenity deck view. Upgraded hardwood floors, Bosch stainless steel appliances, quartz countertops, and large floor-to-ceiling windows. The amenity deck is one of the largest in Honolulu. Enjoy resort-like luxurious amenities featuring a lap pool, a second pool with whirlpool spas, fitness center, BBQ cabanas, dog park, playground, party rooms, a dry and steam sauna and lots of guest parkings! Fantastic location, across from the world class Ala Moana Shopping Center and minutes from the beaches and famous restaurants. Pet Friendly Building. **Sale Conditions:** None **Schools:** , , * [Request Showing](#), [Photos](#), [History](#), [Maps](#), [Deed](#), [Watch List](#), [Tax Info](#)



Address	Price	Bd & Bth	Living / Avg.	Land Avg.	Lanai	Occ.	FL	DOM
1388 Kapiolani Boulevard 1401	\$1,248,000	2 & 2/0	901 \$1,385	0 \$inf	91	0%	14	125

Address	Tax Maint. Ass.	Assessed Land	Assessed Building	Assessed Total	Ratio	Year & Remodeled
1388 Kapiolani Boulevard 1401	\$106 \$1,182 \$0	\$61,800	\$302,400	\$364,200	343%	2023 & NA

[1388 Kapiolani Boulevard 1401](#) - MLS#: [202325999](#) - Original price was \$1,399,000 - Sky Ala Moana West, Brand New condo, most desirable Premium stack "01" corner unit with 2 bedrooms, 2 bathrooms, 2 parking stalls, a walk-in closet and storage. Beautiful ocean and amenity deck view. Upgraded hardwood floors, Bosch stainless steel appliances, quartz countertops, and large floor-to-ceiling windows. The amenity deck is one of the largest in Honolulu. Enjoy resort-like luxurious amenities featuring a lap pool, a second pool with whirlpool spas, fitness center, BBQ cabanas, dog park, playground, party rooms, a dry and steam sauna and lots of guest parkings! Fantastic location, across from the world class Ala Moana Shopping Center and minutes from the beaches and famous restaurants. Pet Friendly Building. **Region:** Metro **Neighborhood:** Holiday Mart **Condition:** Excellent **Parking:** Assigned, Covered - 2, Secured Entry **Total Parking:** 2 **View:** City, Mountain, Ocean **Frontage:** Ocean **Pool:** **Zoning:** 33 - BMX-3 Community Business M **Sale Conditions:** None **Schools:** , , * [Request Showing, Photos, History, Maps, Deed, Watch List, Tax Info](#)

DOM = Days on Market, Occ. = Occupancy, FL = Floor Number