

Makiki Plaza 1561 Pensacola Street Unit 801, Honolulu 96822 * Makiki Plaza * \$480,000 *

Originally \$488,888

Beds: **2**
 Bath: **2/0**
 Living Sq. Ft.: **840**
 Land Sq. Ft.: **34,456**
 Lanai Sq. Ft.: **0**
 Sq. Ft. Other: **0**
 Total Sq. Ft. **840**
 Maint./Assoc. **\$707 / \$0**

MLS#: **202326025**, FS
Status: **Active**
List Date & DOM: **12-04-2023 & 159**
Condition: **Above Average**
Frontage: **Other**
Tax/Year: **\$142/2023**
Neighborhood: **Makiki Area**
Flood Zone: **Zone X - Tool**

Year Built: **1980**
Remodeled:
Total Parking: **1**
[Assessed Value](#)
Building: **\$421,300**
Land: **\$65,700**
Total: **\$487,000**
Stories / CPR: **One / No**

Parking: **Assigned, Covered - 1, Guest, Secured Entry**

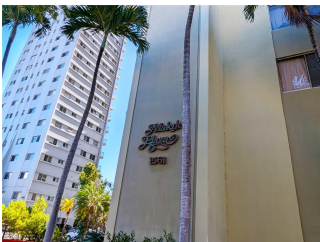
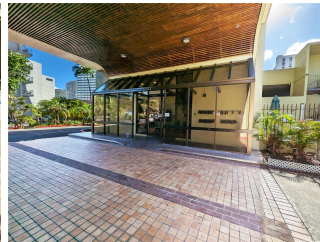
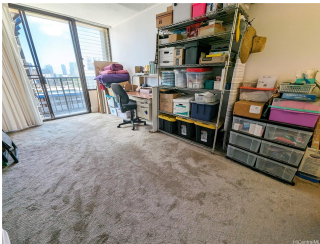
Frontage: **Other**

Zoning: 12 - A-2 Medium Density Apartme

View: **City, Mountain**

Public Remarks: Rarely available, this inviting 2-bedroom, 2-bathroom, corner end unit, in the highly desirable Makiki Plaza, is a true gem in the heart of Honolulu. The living area and bedrooms have floor to ceiling sliding glass doors and the bedrooms boast beautiful, custom, built-in armoires, not only providing ample storage but also adding a touch of sophistication. Located on the corner, this end unit benefits from exceptional cross breezes. Makiki Plaza's prime location offers easy access to shopping, dining, and entertainment. It's just minutes from coffee shops, restaurants, grocery stores, gas stations, Ala Moana Shopping Center, and so much more!! With views from Makiki to Kakaako, this unit won't last long!

Sale Conditions: None **Schools:** [Kaahumanu](#), [Stevenson](#), [Mckinley](#) * [Request Showing](#), [Photos](#), [History](#), [Maps](#), [Deed](#), [Watch List](#), [Tax Info](#)



Address	Price	Bd & Bth	Living / Avg.	Land Avg.	Lanai	Occ.	FL	DOM
1561 Pensacola Street 801	\$480,000	2 & 2/0	840 \$571	34,456 \$14	0	59%	8	159

Address	Tax Maint. Ass.	Assessed Land	Assessed Building	Assessed Total	Ratio	Year & Remodeled
1561 Pensacola Street 801	\$142 \$707 \$0	\$65,700	\$421,300	\$487,000	99%	1980 & NA

[1561 Pensacola Street 801](#) - MLS#: [202326025](#) - Original price was \$488,888 - Rarely available, this inviting 2-bedroom, 2-bathroom, corner end unit, in the highly desirable Makiki Plaza, is a true gem in the heart of Honolulu. The living area and bedrooms have floor to ceiling sliding glass doors and the bedrooms boast beautiful, custom, built-in armoires, not only providing ample storage but also adding a touch of sophistication. Located on the corner, this end unit benefits from exceptional cross breezes. Makiki Plaza's prime location offers easy access to shopping, dining, and entertainment. It's just minutes from coffee shops, restaurants, grocery stores, gas stations, Ala Moana Shopping Center, and so much more!! With views from Makiki to Kakaako, this unit won't last long! **Region:** Metro **Neighborhood:** Makiki Area **Condition:** Above Average **Parking:** Assigned, Covered - 1, Guest, Secured Entry **Total Parking:** 1 **View:** City, Mountain **Frontage:** Other **Pool:** **Zoning:** 12 - A-2 Medium Density Apartme **Sale Conditions:** None **Schools:** [Kaahumanu](#), [Stevenson](#), [Mckinley](#) * [Request Showing](#), [Photos](#), [History](#), [Maps](#), [Deed](#), [Watch List](#), [Tax Info](#)

DOM = Days on Market, Occ. = Occupancy, FL = Floor Number