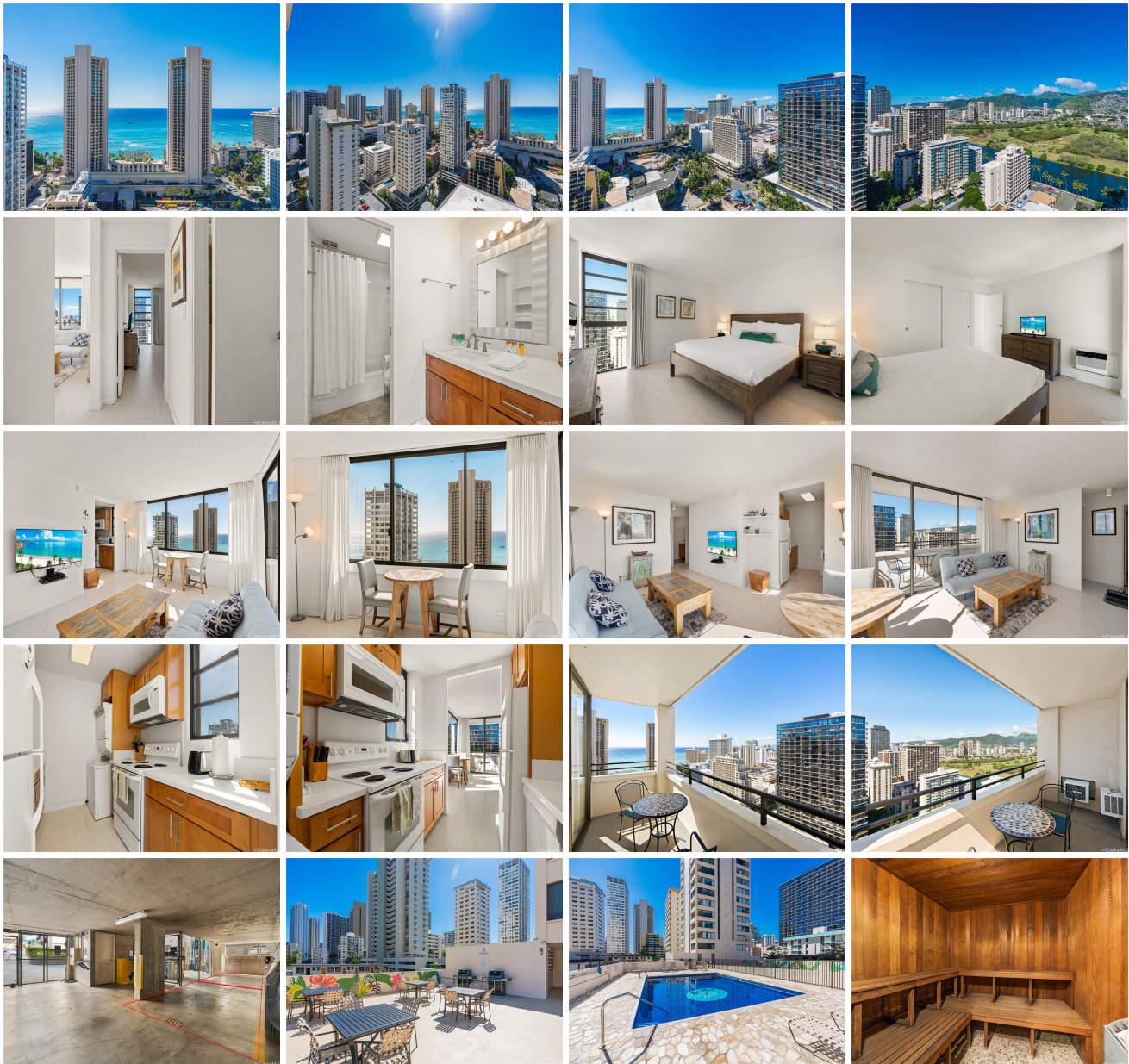


Waikiki Skytower 2410 Cleghorn Street Unit 2904, Honolulu 96815 * Waikiki Skytower *

\$325,000 * Originally \$345,000

Beds: 1	MLS#: 202326279 , LH	Year Built: 1978
Bath: 1/0	Status: Active	Remodeled:
Living Sq. Ft.: 585	List Date & DOM: 01-26-2024 & 109	Total Parking: 2
Land Sq. Ft.: 22,041	Condition: Excellent, Above Average	Assessed Value
Lanai Sq. Ft.: 90	Frontage:	Building: \$397,200
Sq. Ft. Other: 0	Tax/Year: \$137/2023	Land: \$71,300
Total Sq. Ft. 675	Neighborhood: Waikiki	Total: \$468,500
Maint./Assoc. \$1,030 / \$0	Flood Zone : Zone AE - Tool	Stories / CPR: / No
Parking: Assigned, Covered - 2, Tandem	Frontage:	
Zoning : X2 - Apartment Precinct	View: City, Ocean	

Public Remarks: Great unit for first-time home buyer and also investor. Only two blocks from the beach and walk distance to world-class dining, and shopping. This corner large one-bedroom unit is the best unit in the building with large lanai and amazing ocean, mountains, and also Ala Wai Canal view. It is very rare to own two secured parkings (tandem) with 1 bedroom unit in Waikiki. The unit has WASHER/DRYER in the unit and washlet installed as well. **Sale Conditions:** None **Schools:** , , * [Request Showing](#), [Photos](#), [History](#), [Maps](#), [Deed](#), [Watch List](#), [Tax Info](#)





Address	Price	Bd & Bth	Living / Avg.	Land Avg.	Lanai	Occ.	FL	DOM
2410 Cleghorn Street 2904	\$325,000 LH	1 & 1/0	585 \$556	22,041 \$15	90	25%	29	109

Address	Tax Maint. Ass.	Assessed Land	Assessed Building	Assessed Total	Ratio	Year & Remodeled
2410 Cleghorn Street 2904	\$137 \$1,030 \$0	\$71,300	\$397,200	\$468,500	69%	1978 & NA

[2410 Cleghorn Street 2904](#) - MLS#: [202326279](#) - Original price was \$345,000 - Great unit for first-time home buyer and also investor. Only two blocks from the beach and walk distance to world-class dining, and shopping. This corner large one-bedroom unit is the best unit in the building with large lanai and amazing ocean, mountains, and also Ala Wai Canal view. It is very rare to own two secured parkings (tandem) with 1 bedroom unit in Waikiki. The unit has WASHER/DRYER in the unit and washlet installed as well. **Region:** Metro **Neighborhood:** Waikiki **Condition:** Excellent, Above Average **Parking:** Assigned, Covered - 2, Tandem **Total Parking:** 2 **View:** City, Ocean **Frontage:** Pool: **Zoning:** X2 - Apartment Precinct **Sale Conditions:** None **Schools:** , , * [Request Showing](#), [Photos](#), [History](#), [Maps](#), [Deed](#), [Watch List](#), [Tax Info](#)

DOM = Days on Market, Occ. = Occupancy, FL = Floor Number