

Nuuanu Brookside 55 S Judd Street Unit 608, Honolulu 96817 * Nuuanu Brookside *

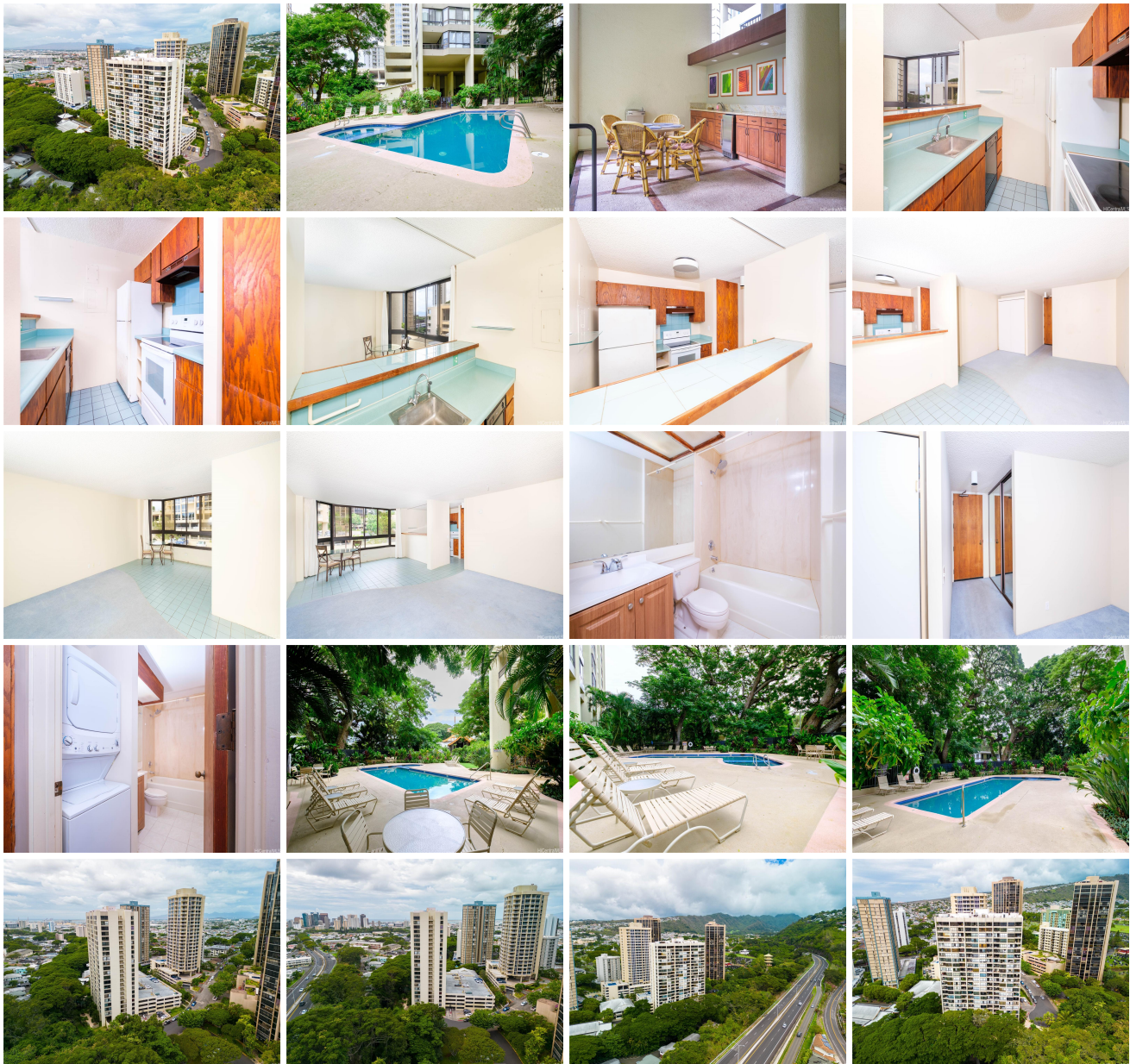
\$299,000 * Originally \$329,000

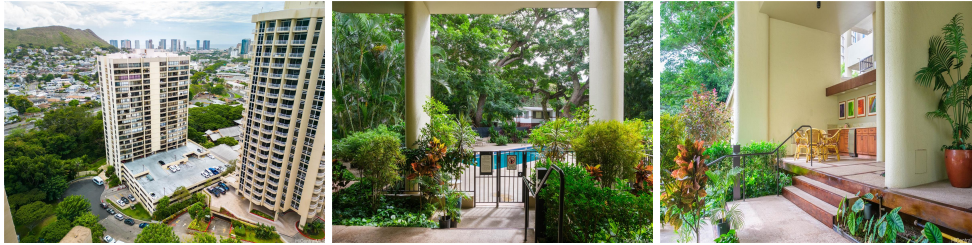
Beds: 0	MLS#: 202326323 , LH	Year Built: 1979
Bath: 1/0	Status: Active	Remodeled:
Living Sq. Ft.: 602	List Date & DOM: 11-30-2023 & 161	Total Parking: 1
Land Sq. Ft.: 51,793	Condition: Above Average	Assessed Value
Lanai Sq. Ft.: 0	Frontage:	Building: \$298,900
Sq. Ft. Other: 0	Tax/Year: \$97/2023	Land: \$31,300
Total Sq. Ft. 602	Neighborhood: Nuuanu-lower	Total: \$330,200
Maint./Assoc. \$541 / \$0	Flood Zone : Zone AE - Tool	Stories / CPR: 21+ / No
Parking: Assigned, Covered - 1, Garage, Guest	Frontage:	

[Zoning](#): **13 - A-3 High Density Apartment**

View: **City, Mountain**

Public Remarks: Rarely available studio at Nuuanu Brookside. Lanai was previously incorporated into increased interior living space. Washer/dryer in unit. Enjoy the tranquil, lush landscaping surrounding this well maintained building, conveniently located only a few minutes from downtown Honolulu. Secured building with 24-hour security, ample guest parking and amenities galore including pool, hot tub, sauna, showers, fitness room, BBQ and recreation areas. Low lease rent with a long lease, expiration not until 2070. **Sale Conditions:** None **Schools:** , , * [Request Showing](#), [Photos](#), [History](#), [Maps](#), [Deed](#), [Watch List](#), [Tax Info](#)





Address	Price	Bd & Bth	Living / Avg.	Land Avg.	Lanai	Occ.	FL	DOM
55 S Judd Street 608	\$299,000 LH	0 & 1/0	602 \$497	51,793 \$6	0	56%	6	161

Address	Tax Maint. Ass.	Assessed Land	Assessed Building	Assessed Total	Ratio	Year & Remodeled
55 S Judd Street 608	\$97 \$541 \$0	\$31,300	\$298,900	\$330,200	91%	1979 & NA

[55 S Judd Street 608](#) - MLS#: [202326323](#) - Original price was \$329,000 - Rarely available studio at Nuuanu Brookside. Lanai was previously incorporated into increased interior living space. Washer/dryer in unit. Enjoy the tranquil, lush landscaping surrounding this well maintained building, conveniently located only a few minutes from downtown Honolulu. Secured building with 24-hour security, ample guest parking and amenities galore including pool, hot tub, sauna, showers, fitness room, BBQ and recreation areas. Low lease rent with a long lease, expiration not until 2070. **Region:** Metro **Neighborhood:** Nuuanu-lower **Condition:** Above Average **Parking:** Assigned, Covered - 1, Garage, Guest **Total Parking:** 1 **View:** City, Mountain **Frontage:** **Pool:** **Zoning:** 13 - A-3 High Density Apartment **Sale Conditions:** None **Schools:** , , * [Request Showing](#), [Photos](#), [History](#), [Maps](#), [Deed](#), [Watch List](#), [Tax Info](#)

DOM = Days on Market, Occ. = Occupancy, FL = Floor Number