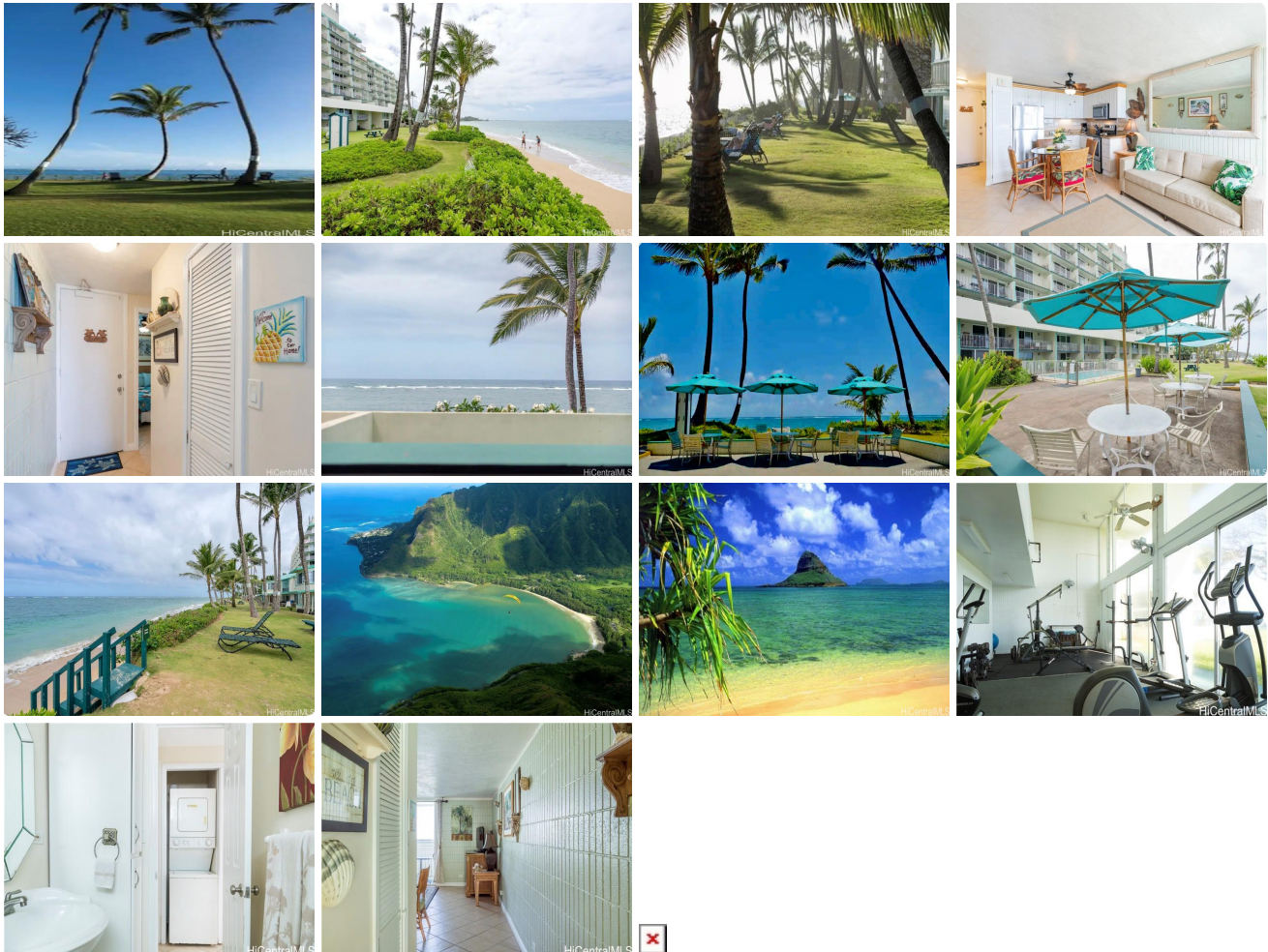


## Pats at Punaluu 53-567 Kamehameha Highway Unit 306, Hauula 96717 \* Pats at Punaluu \*

**\$399,000 \* Originally \$409,000**

Beds: <b>1</b>	MLS#: <b>202326411, FS</b>	Year Built: <b>1975</b>
Bath: <b>1/0</b>	Status: <b>Active</b>	Remodeled: <b>2022</b>
Living Sq. Ft.: <b>524</b>	List Date & DOM: <b>12-03-2023 &amp; 158</b>	Total Parking: <b>1</b>
Land Sq. Ft.: <b>126,672</b>	Condition: <b>Excellent</b>	<a href="#">Assessed Value</a>
Lanai Sq. Ft.: <b>68</b>	Frontage: <b>Ocean, Sandy Beach</b>	Building: <b>\$265,500</b>
Sq. Ft. Other: <b>0</b>	Tax/Year: <b>\$73/2023</b>	Land: <b>\$46,800</b>
Total Sq. Ft. <b>592</b>	Neighborhood: <b>Punaluu</b>	Total: <b>\$312,300</b>
Maint./Assoc. <b>\$929 / \$0</b>	<a href="#">Flood Zone</a> : <b>Zone AE - Tool</b>	Stories / CPR: <b>4-7 / No</b>
Parking: <b>Guest, Open - 1, Street</b>	Frontage: <b>Ocean, Sandy Beach</b>	
<a href="#">Zoning</a> : <b>12 - A-2 Medium Density Apartme</b>	View: <b>Coastline, Mountain, Ocean</b>	

**Public Remarks:** Oceanfront 3rd floor condo on a white sandy beach where you can enjoy swimming, surfing, snorkeling, fishing, kayaking & paddle boarding! Perfectly located on the Windward Side of Oahu without the crowds of town. Building amenities include a gym, swimming pool, picnic tables, BBQ area, surf board and kayak storage all on ground floor. Well maintained common areas at Pats At Punaluu for great resort-like feeling. This turnkey furnished condo has one bedroom , a remodeled living-room, full- bathroom & kitchen. Indulge in the quintessential coastal lifestyle at Pats at Punaluu, where each day unfolds with the rhythm of the ocean. Wake up to the sound of waves lapping against the shore, and spend your mornings exploring pristine beaches and vibrant marine life. Afternoons are for adrenaline-pumping activities like surfing and snorkeling, followed by sunset barbecues and leisurely dips in the pool. This isn't just a home—it's a gateway to endless seaside adventures and unforgettable moments. Welcome to paradise." Mahalo **Sale Conditions:** None **Schools:** [Kahuku](#), [Kahuku](#), [Kahuku](#) \* [Request Showing](#), [Photos](#), [History](#), [Maps](#), [Deed](#), [Watch List](#), [Tax Info](#)



Address	Price	Bd & Bth	Living / Avg.	Land   Avg.	Lanai	Occ.	FL	DOM
<a href="#">53-567 Kamehameha Highway 306</a>	<b>\$399,000</b>	1 & 1/0	524   \$761	126,672   \$3	68	42%	3	158

Address	Tax   Maint.   Ass.	Assessed Land	Assessed Building	Assessed Total	Ratio	Year & Remodeled
<a href="#">53-567 Kamehameha Highway 306</a>	\$73   \$929   \$0	\$46,800	\$265,500	\$312,300	128%	1975 & 2022

[53-567 Kamehameha Highway 306](#) - MLS#: [202326411](#) - Original price was \$409,000 - Oceanfront 3rd floor condo on a white sandy beach where you can enjoy swimming, surfing, snorkeling, fishing, kayaking & paddle boarding! Perfectly located on the Windward Side of Oahu without the crowds of town. Building amenities include a gym, swimming pool, picnic tables, BBQ area, surf board and kayak storage all on ground floor. Well maintained common areas at Pats At Punaluu for great resort-like feeling. This turnkey furnished condo has one bedroom , a remodeled living-room, full- bathroom & kitchen. Indulge in the quintessential coastal lifestyle at Pats at Punaluu, where each day unfolds with the rhythm of the ocean. Wake up to the sound of waves lapping against the shore, and spend your mornings exploring pristine beaches and vibrant marine life. Afternoons are for adrenaline-pumping activities like surfing and snorkeling, followed by sunset barbecues and leisurely dips in the pool. This isn't just a home—it's a gateway to endless seaside adventures and unforgettable moments. Welcome to paradise." Mahalo **Region:** Kaneohe **Neighborhood:** Punaluu **Condition:** Excellent **Parking:** Guest, Open - 1, Street **Total Parking:** 1 **View:** Coastline, Mountain, Ocean **Frontage:** Ocean,Sandy Beach **Pool:** **Zoning:** 12 - A-2 Medium Density Apartme **Sale Conditions:** None **Schools:** [Kahuku](#), [Kahuku](#), [Kahuku](#) \* [Request Showing](#), [Photos](#), [History](#), [Maps](#), [Deed](#), [Watch List](#), [Tax Info](#)

DOM = Days on Market, Occ. = Occupancy, FL = Floor Number