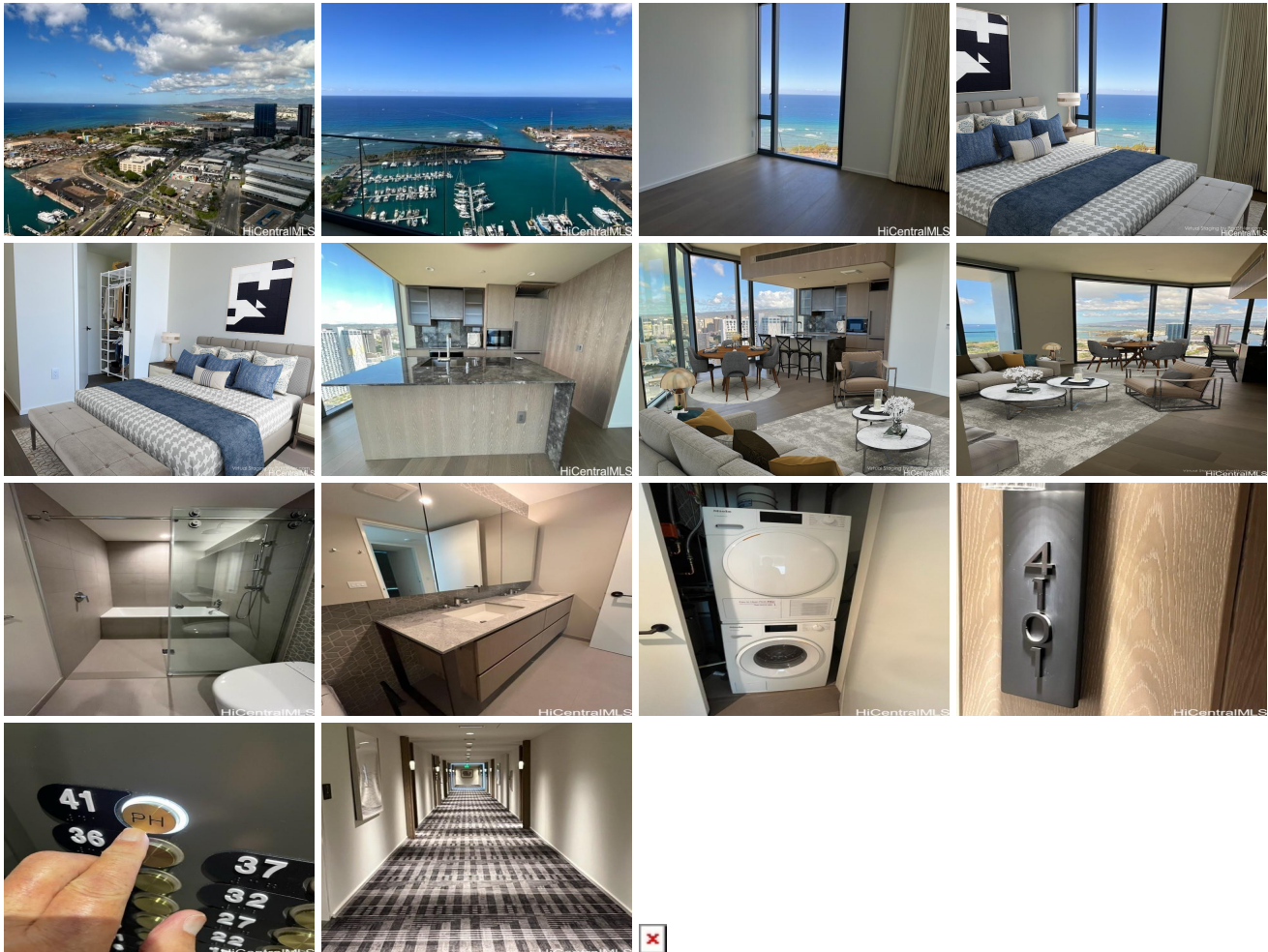


# **Koula 1000 Auahi Street Unit PH4101, Honolulu 96814** \* Koula \* **\$1,697,000** \* Originally

**\$1,740,000**

Beds: <b>1</b>	MLS#: <b>202326535, FS</b>	Year Built: <b>2021</b>
Bath: <b>1/0</b>	Status: <b>Pending</b>	Remodeled:
Living Sq. Ft.: <b>739</b>	List Date & DOM: <b>12-05-2023 &amp; 137</b>	Total Parking: <b>1</b>
Land Sq. Ft.: <b>0</b>	Condition: <b>Excellent</b>	<a href="#">Assessed Value</a>
Lanai Sq. Ft.: <b>0</b>	Frontage:	Building: <b>\$1,062,900</b>
Sq. Ft. Other: <b>0</b>	Tax/Year: <b>\$595/2023</b>	Land: <b>\$34,600</b>
Total Sq. Ft. <b>739</b>	Neighborhood: <b>Kakaako</b>	Total: <b>\$1,097,500</b>
Maint./Assoc. <b>\$948 / \$0</b>	<a href="#">Flood Zone</a> : <b>Zone AE - Tool</b>	Stories / CPR: / <b>No</b>
Parking: <b>Assigned, Covered - 1, Secured Entry</b>	Frontage:	
<a href="#">Zoning</a> : <b>Kak - Kakaako Community Development Project</b>	View: <b>Coastline, Ocean, Sunset</b>	

**Public Remarks:** This PENT HOUSE Unit has upgraded Wood Flooring, electric drapery and TOTO Neorest. Ko'ula at Ward Village is first project on Victoria Ward Park and was designed by globally celebrated architect Jeanne Gang and the award winning design firm Yabu Pushelberg, is an example of bringing the inside and outside together effortlessly. Structural elements integrated into the design allowing for more interior space. unit has floor-to-ceiling windows, open kitchen that flows into the living and dining. Custom light and dark cabinetry, wood flooring and stone palettes perfectly compliment the Miele kitchen appliances. Residences, down to the bronze accented vanities, encourages artful living. Enjoy the open-air lobby overlooking the park's garden-like setting and over an acre of outdoor amenity space which includes BBQ pavilions, fitness center, oversized spas & more. **Sale Conditions:** None **Schools:** , , \* [Request Showing](#), [Photos](#), [History](#), [Maps](#), [Deed](#), [Watch List](#), [Tax Info](#)



Address	Price	Bd & Bth	Living / Avg.	Land   Avg.	Lanai	Occ.	FL	DOM
<a href="#">1000 Auahi Street PH4101</a>	<b>\$1,697,000</b>	1 & 1/0	739   \$2,296	0   \$inf	0	55%	41	137

Address	Tax   Maint.   Ass.	Assessed Land	Assessed Building	Assessed Total	Ratio	Year & Remodeled
<a href="#">1000 Auahi Street PH4101</a>	\$595   \$948   \$0	\$34,600	\$1,062,900	\$1,097,500	155%	2021 & NA

[1000 Auahi Street PH4101](#) - MLS#: [202326535](#) - Original price was \$1,740,000 - This PENT HOUSE Unit has upgraded Wood Flooring, electric drapery and TOTO Neorest. Ko'ula at Ward Village is first project on Victoria Ward Park and was designed by globally celebrated architect Jeanne Gang and the award winning design firm Yabu Pushelberg, is an example of bringing the inside and outside together effortlessly. Structural elements integrated into the design allowing for more interior space. unit has floor-to-ceiling windows, open kitchen that flows into the living and dining. Custom light and dark cabinetry, wood flooring and stone palettes perfectly compliment the Miele kitchen appliances. Residences, down to the bronze accented vanities, encourages artful living. Enjoy the open-air lobby overlooking the park's garden-like setting and over an acre of outdoor amenity space which includes BBQ pavilions, fitness center, oversized spas & more. **Region:** Metro **Neighborhood:** Kakaako **Condition:** Excellent **Parking:** Assigned, Covered - 1, Secured Entry **Total Parking:** 1 **View:** Coastline, Ocean, Sunset **Frontage:** **Pool:** **Zoning:** Kak - Kakaako Community Development Project **Sale Conditions:** None **Schools:** , , \*  
[Request Showing](#), [Photos](#), [History](#), [Maps](#), [Deed](#), [Watch List](#), [Tax Info](#)

DOM = Days on Market, Occ. = Occupancy, FL = Floor Number