

## **Trump Tower Waikiki 223 Saratoga Road Unit 1420, Honolulu 96815 \* Trump Tower**

**Waikiki \* \$550,000**

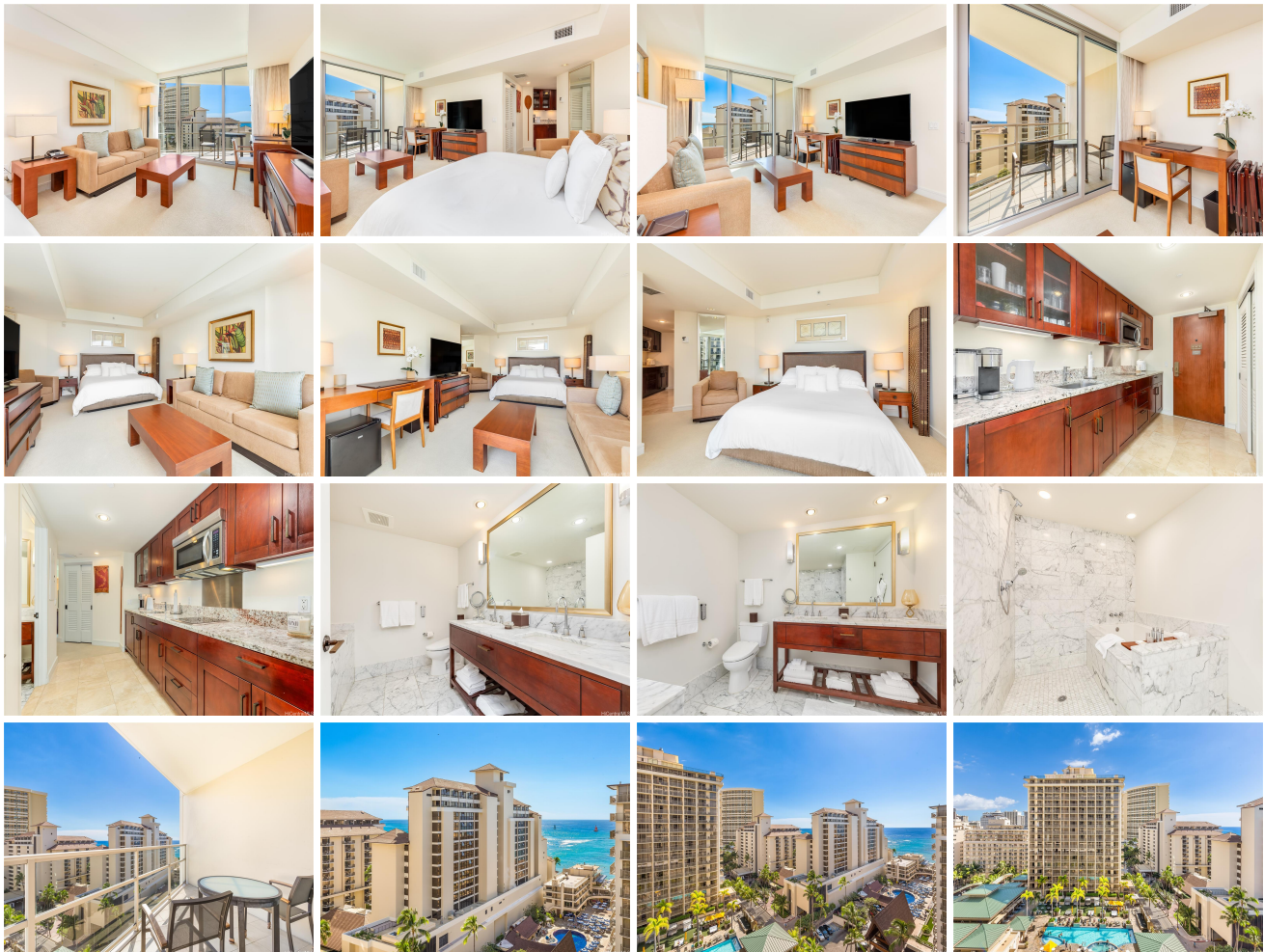
Beds: <b>0</b>	MLS#: <b>202326669, FS</b>	Year Built: <b>2009</b>
Bath: <b>1/0</b>	Status: <b>Active</b>	Remodeled:
Living Sq. Ft.: <b>491</b>	List Date & DOM: <b>12-11-2023 &amp; 154</b>	Total Parking: <b>1</b>
Land Sq. Ft.: <b>0</b>	Condition: <b>Excellent</b>	<a href="#">Assessed Value</a>
Lanai Sq. Ft.: <b>75</b>	Frontage: <b>Other</b>	Building: <b>\$228,500</b>
Sq. Ft. Other: <b>0</b>	Tax/Year: <b>\$148/2023</b>	Land: <b>\$277,800</b>
Total Sq. Ft. <b>566</b>	Neighborhood: <b>Waikiki</b>	Total: <b>\$506,300</b>
Maint./Assoc. <b>\$857 / \$0</b>	<a href="#">Flood Zone</a> : <b>Zone AE - Tool</b>	Stories / CPR: <b>21+ / No</b>
Parking: <b>Guest, Secured Entry, Street, Unassigned</b>	Frontage: <b>Other</b>	

**Zoning: X6 - Resort Mixed Use Precinct**

**View: City, Diamond Head, Ocean, Sunset**

**Public Remarks:** Don't miss this rare opportunity to own in a 5-star hotel in the heart of Waikiki! Trump Tower Waikiki is now Ka La'i Waikiki Beach and joining Hilton's luxury LXR Hotels & Resorts portfolio. Be the first to invest in this new positive change. Seller will payoff common area assessment at closing so you get to enjoy the brand new renovated hotel! Building amenities include maid service, room service, 3 high-end restaurants, infinity pool & jacuzzi, 24hr fitness center, luxury spa for massage & facials, business center, surfboard & bike storage, and free valet parking for owners. This extra large studio unit features 491 sqft of open living, 75 sqft lanai with ocean views, fully furnished as a hotel room, and lower residential property tax rate. Maintenance fee includes access to all amenities and utilities except electricity. Located across the street from the world famous Waikiki Beach, Fort Derussy park, and walking distance to many shopping and dining options. Available for investment in the hotel program, as a long term 1 year rental, or your primary residence or second home in Hawaii. Come take a look today and enjoy this Waikiki resort executive lifestyle! **Sale Conditions:** None **Schools:** , , \*

[Request Showing](#), [Photos](#), [History](#), [Maps](#), [Deed](#), [Watch List](#), [Tax Info](#)





Address	Price	Bd & Bth	Living / Avg.	Land   Avg.	Lanai	Occ.	FL	DOM
<a href="#">223 Saratoga Road 1420</a>	<a href="#">\$550,000</a>	0 & 1/0	491   \$1,120	0   \$inf	75	5%	14	154

Address	Tax   Maint.   Ass.	Assessed Land	Assessed Building	Assessed Total	Ratio	Year & Remodeled
<a href="#">223 Saratoga Road 1420</a>	\$148   \$857   \$0	\$277,800	\$228,500	\$506,300	109%	2009 & NA

[223 Saratoga Road 1420](#) - MLS#: [202326669](#) - Don't miss this rare opportunity to own in a 5-star hotel in the heart of Waikiki! Trump Tower Waikiki is now Ka La'i Waikiki Beach and joining Hilton's luxury LXR Hotels & Resorts portfolio. Be the first to invest in this new positive change. Seller will payoff common area assessment at closing so you get to enjoy the brand new renovated hotel! Building amenities include maid service, room service, 3 high-end restaurants, infinity pool & jacuzzi, 24hr fitness center, luxury spa for massage & facials, business center, surfboard & bike storage, and free valet parking for owners. This extra large studio unit features 491 sqft of open living, 75 sqft lanai with ocean views, fully furnished as a hotel room, and lower residential property tax rate. Maintenance fee includes access to all amenities and utilities except electricity. Located across the street from the world famous Waikiki Beach, Fort Derussy park, and walking distance to many shopping and dining options. Available for investment in the hotel program, as a long term 1 year rental, or your primary residence or second home in Hawaii. Come take a look today and enjoy this Waikiki resort executive lifestyle! **Region:** Metro **Neighborhood:** Waikiki **Condition:** Excellent **Parking:** Guest, Secured Entry, Street, Unassigned **Total Parking:** 1 **View:** City, Diamond Head, Ocean, Sunset **Frontage:** Other **Pool:** **Zoning:** X6 - Resort Mixed Use Precinct **Sale Conditions:** None **Schools:** , , \* [Request Showing](#), [Photos](#), [History](#), [Maps](#), [Deed](#), [Watch List](#), [Tax Info](#)

DOM = Days on Market, Occ. = Occupancy, FL = Floor Number