

**Loft at Waikiki 427 Launiu Street Unit 603, Honolulu 96815 \* Loft at Waikiki \* \$998,000 \***

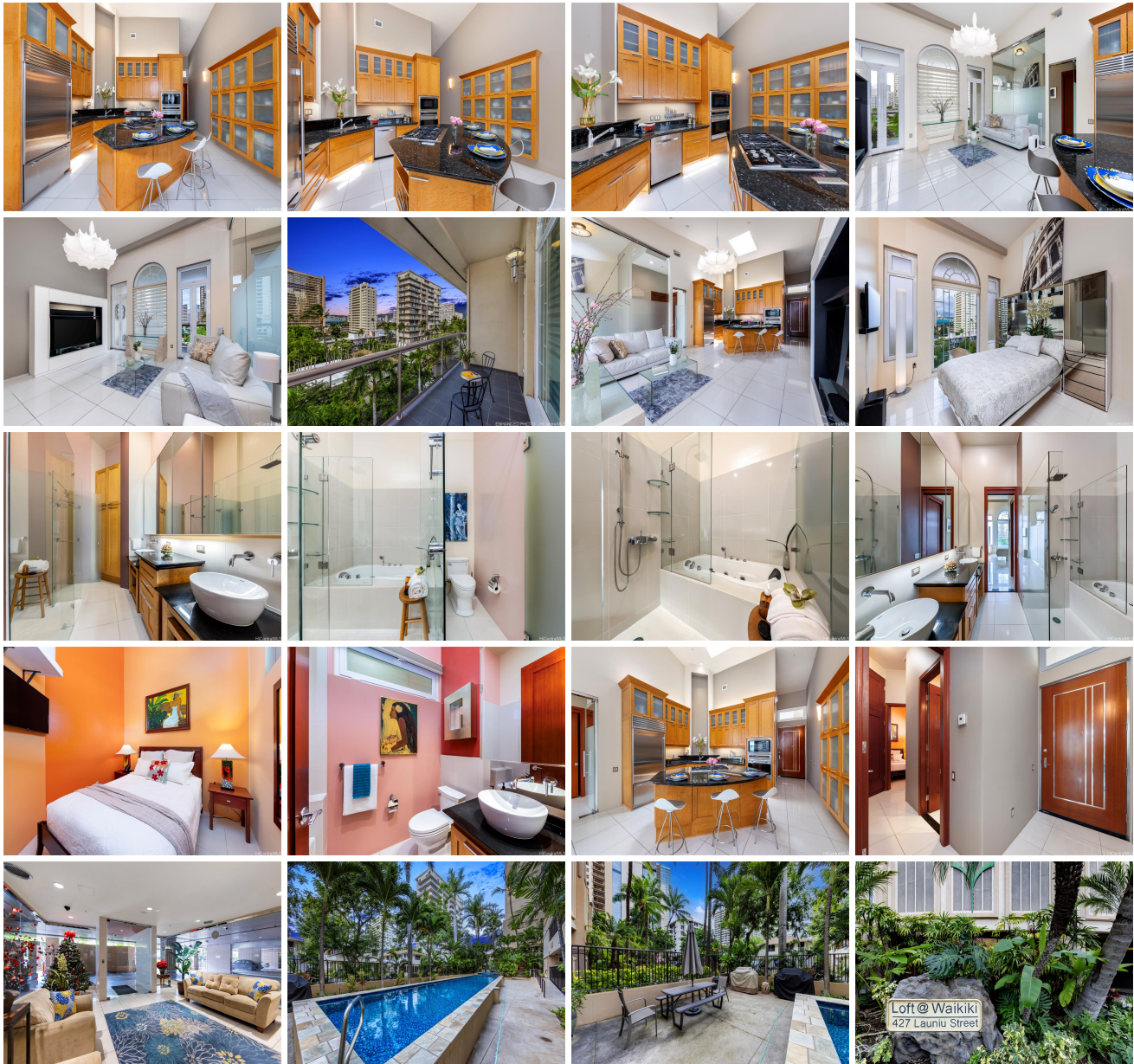
**Originally \$1,059,000**

Beds: <b>2</b>	MLS#: <b><u>202328215</u>, FS</b>	Year Built: <b>2008</b>
Bath: <b>2/0</b>	Status: <b>Active</b>	Remodeled:
Living Sq. Ft.: <b>1,047</b>	List Date & DOM: <b>12-26-2023 &amp; 140</b>	Total Parking: <b>2</b>
Land Sq. Ft.: <b>0</b>	Condition: <b>Above Average</b>	<a href="#">Assessed Value</a>
Lanai Sq. Ft.: <b>92</b>	Frontage:	Building: <b>\$690,900</b>
Sq. Ft. Other: <b>0</b>	Tax/Year: <b>\$257/2024</b>	Land: <b>\$278,300</b>
Total Sq. Ft. <b>1,139</b>	Neighborhood: <b>Waikiki</b>	Total: <b>\$969,200</b>
Maint./Assoc. <b>\$1,041 / \$0</b>	<a href="#">Flood Zone</a> : <b>Zone AO - <a href="#">Tool</a></b>	Stories / CPR: <b>4-7 / No</b>
Parking: <b>Assigned, Covered - 2, Secured Entry</b>	Frontage:	

[Zoning](#): **X2 - Apartment Precinct**

View: **City**

**Public Remarks:** Tucked away just blocks from Oahu's sandy coastline and beautiful tropical ocean waters, Loft at Waikiki stands as one of Honolulu's most incomparable boutique condominium residences. This top-floor Penthouse unit features a well-designed island-modern floor plan, and feels like a single-family home as you enter through a grand large doorway to find 15-foot vaulted ceilings with a skylight in the main living area. Loft at Waikiki #603 shows incredible pride-of-ownership , and includes high-end features throughout; Sub-Zero and Wolf kitchen appliances, large-slab tile flooring, designer Italian lighting, a true resort-style primary bedroom/bathroom suite with separate walk-in shower and deep soaking tub, built-in closet systems, Central AC, and much more. This well-managed building includes a large lap-style swimming pool plus a hot tub, putting green, barbecue areas, and more, all shrouded in island-style landscaping for privacy. Listing includes enhanced photos. **Sale Conditions:** None **Schools:** [Jefferson](#), [Washington](#), [Kaimuki](#) \* [Request Showing](#), [Photos](#), [History](#), [Maps](#), [Deed](#), [Watch List](#), [Tax Info](#)





Address	Price	Bd & Bth	Living / Avg.	Land   Avg.	Lanai	Occ.	FL	DOM
<a href="#">427 Launiu Street 603</a>	<b>\$998,000</b>	2 & 2/0	1,047   \$953	0   \$inf	92	78%	6	140

Address	Tax   Maint.   Ass.	Assessed Land	Assessed Building	Assessed Total	Ratio	Year & Remodeled
<a href="#">427 Launiu Street 603</a>	\$257   \$1,041   \$0	\$278,300	\$690,900	\$969,200	103%	2008 & NA

[427 Launiu Street 603](#) - MLS#: [202328215](#) - Original price was \$1,059,000 - Tucked away just blocks from Oahu's sandy coastline and beautiful tropical ocean waters, Loft at Waikiki stands as one of Honolulu's most incomparable boutique condominium residences. This top-floor Penthouse unit features a well-designed island-modern floor plan, and feels like a single-family home as you enter through a grand large doorway to find 15-foot vaulted ceilings with a skylight in the main living area. Loft at Waikiki #603 shows incredible pride-of-ownership , and includes high-end features throughout; Sub-Zero and Wolf kitchen appliances, large-slab tile flooring, designer Italian lighting, a true resort-style primary bedroom/bathroom suite with separate walk-in shower and deep soaking tub, built-in closet systems, Central AC, and much more. This well-managed building includes a large lap-style swimming pool plus a hot tub, putting green, barbecue areas, and more, all shrouded in island-style landscaping for privacy. Listing includes enhanced photos. **Region:** Metro **Neighborhood:** Waikiki **Condition:** Above Average **Parking:** Assigned, Covered - 2, Secured Entry **Total Parking:** 2 **View:** City **Frontage:** **Pool:** **Zoning:** X2 - Apartment Precinct **Sale Conditions:** None **Schools:** [Jefferson](#), [Washington](#), [Kaimuki](#) \* [Request Showing](#), [Photos](#), [History](#), [Maps](#), [Deed](#), [Watch List](#), [Tax Info](#)

DOM = Days on Market, Occ. = Occupancy, FL = Floor Number