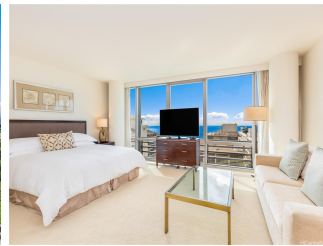


Trump Tower Waikiki 223 Saratoga Road Unit 1921, Honolulu 96815 * Trump Tower Waikiki * \$680,000

Beds: 0	MLS#: 202328233, FS	Year Built: 2009
Bath: 1/0	Status: Active	Remodeled:
Living Sq. Ft.: 441	List Date & DOM: 12-21-2023 & 152	Total Parking: 1
Land Sq. Ft.: 0	Condition: Excellent	Assessed Value
Lanai Sq. Ft.: 0	Frontage:	Building: \$261,700
Sq. Ft. Other: 0	Tax/Year: \$148/2023	Land: \$245,100
Total Sq. Ft. 441	Neighborhood: Waikiki	Total: \$506,800
Maint./Assoc. \$799 / \$0	Flood Zone : Zone AE - Tool	Stories / CPR: 21+ / No
Parking: Covered - 1, Guest, Other, Secured Entry, Street, Unassigned	Frontage:	
Zoning : X6 - Resort Mixed Use Precinct	View: City, Coastline, Ocean	

Public Remarks: Don't miss this rare opportunity to own in a 5-star hotel in the heart of Waikiki! Trump Tower Waikiki is now Ka La'i Waikiki Beach joining Hilton's luxury LXR Hotels & Resorts portfolio. Be the first to invest in this new positive change. Seller will payoff common area assessment at closing so you get to enjoy the brand new renovated hotel! This large studio unit features 441 sqft of open living overlooking the ocean above Outrigger Reef, fully furnished as a hotel room, and lower \$148/mo residential property tax rate. Building amenities include maid service, room service, 3 high-end restaurants, infinity pool & jacuzzi, 24hr fitness center, luxury spa for massage & facials, business center, surfboard & bike storage, and free valet parking for owners. Maintenance fee includes access to all amenities and utilities except electricity. Located across the street from the world famous Waikiki Beach, Fort Derussy park, and walking distance to many shopping and dining options. Available for investment in the hotel program, as a long term 1 year rental, or your primary residence or second home in Hawaii. Come take a look today and enjoy this Waikiki resort executive lifestyle! **Sale Conditions:** None **Schools:** , , * [Request Showing](#), [Photos](#), [History](#), [Maps](#), [Deed](#), [Watch List](#), [Tax Info](#)



Address	Price	Bd & Bth	Living / Avg.	Land Avg.	Lanai	Occ.	FL	DOM
223 Saratoga Road 1921	\$680,000	0 & 1/0	441 \$1,542	0 \$inf	0	5%	19	152

Address	Tax Maint. Ass.	Assessed Land	Assessed Building	Assessed Total	Ratio	Year & Remodeled
223 Saratoga Road 1921	\$148 \$799 \$0	\$245,100	\$261,700	\$506,800	134%	2009 & NA

[223 Saratoga Road 1921](#) - MLS#: **202328233** - Don't miss this rare opportunity to own in a 5-star hotel in the heart of Waikiki! Trump Tower Waikiki is now Ka La'i Waikiki Beach joining Hilton's luxury LXR Hotels & Resorts portfolio. Be the first to invest in this new positive change. Seller will payoff common area assessment at closing so you get to enjoy the brand new renovated hotel! This large studio unit features 441 sqft of open living overlooking the ocean above Outrigger Reef, fully furnished as a hotel room, and lower \$148/mo residential property tax rate. Building amenities include maid service, room service, 3 high-end restaurants, infinity pool & jacuzzi, 24hr fitness center, luxury spa for massage & facials, business center, surfboard & bike storage, and free valet parking for owners. Maintenance fee includes access to all amenities and utilities except electricity. Located across the street from the world famous Waikiki Beach, Fort Derussy park, and walking distance to many shopping and dining options. Available for investment in the hotel program, as a long term 1 year rental, or your primary residence or second home in Hawaii. Come take a look today and enjoy this Waikiki resort executive lifestyle!
Region: Metro **Neighborhood:** Waikiki **Condition:** Excellent **Parking:** Covered - 1, Guest, Other, Secured Entry, Street, Unassigned **Total Parking:** 1 **View:** City, Coastline, Ocean **Frontage:** Pool: **Zoning:** X6 - Resort Mixed Use Precinct **Sale Conditions:** None **Schools:** , , * [Request Showing](#), [Photos](#), [History](#), [Maps](#), [Deed](#), [Watch List](#), [Tax Info](#)

DOM = Days on Market, Occ. = Occupancy, FL = Floor Number