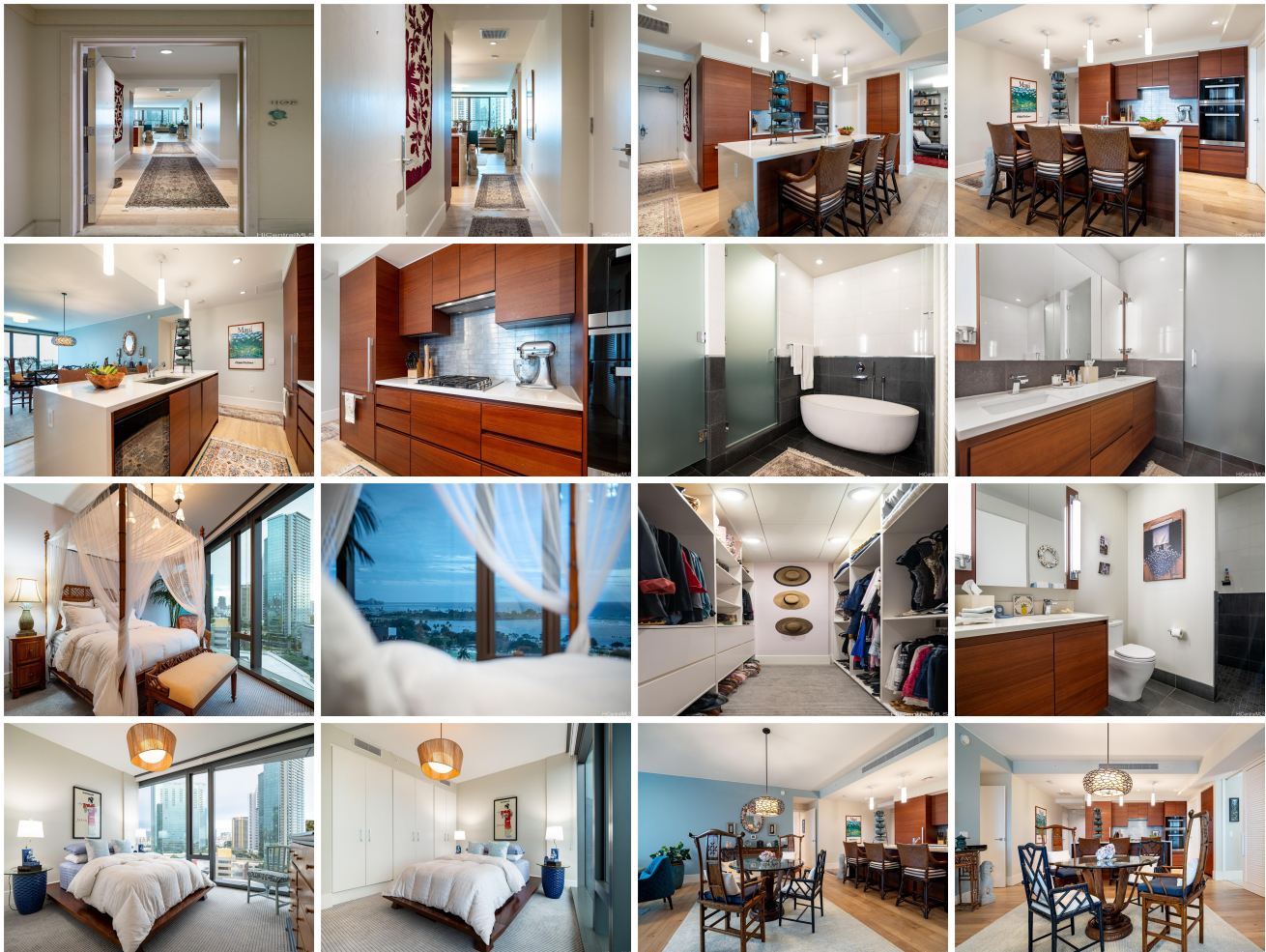


**Anaha - 1108 Auahi 1108 Auahi Street Unit 1102, Honolulu 96814 \* Anaha - 1108 Auahi \***

**\$2,650,000**

Beds: <b>2</b>	MLS#: <b><u>202328316</u>, FS</b>	Year Built: <b>2017</b>
Bath: <b>2/0</b>	Status: <b>Active</b>	Remodeled:
Living Sq. Ft.: <b>1,704</b>	List Date & DOM: <b>12-26-2023 &amp; 135</b>	Total Parking: <b>1</b>
Land Sq. Ft.: <b>0</b>	Condition: <b>Excellent</b>	<a href="#">Assessed Value</a>
Lanai Sq. Ft.: <b>0</b>	Frontage: <b>Other</b>	Building: <b>\$2,177,800</b>
Sq. Ft. Other: <b>0</b>	Tax/Year: <b>\$613/2024</b>	Land: <b>\$84,300</b>
Total Sq. Ft. <b>1,704</b>	Neighborhood: <b>Kakaako</b>	Total: <b>\$2,262,100</b>
Maint./Assoc. <b>\$2,718 / \$0</b>	<a href="#">Flood Zone</a> : <b>Zone AE - Tool</b>	Stories / CPR: <b>21+ / No</b>
Parking: <b>Assigned, Covered - 1, Guest, Secured Entry</b>	Frontage: <b>Other</b>	
<a href="#">Zoning</a> : <b>Kak - Kakaako Community Development Project</b>	View: <b>City, Coastline, Diamond Head, Ocean, Sunrise</b>	

**Public Remarks:** Elegant large 2Bd 2Ba 1704 SqFt favored 02 unit in the Luxurious Anaha Condominium at Ward Village. The kitchen has top line Miele appliances with gas stovetop, Wine cooler. Beautiful living room/entry hardwood floor, bedroom carpet, tile baths and floor to ceiling windows. Primary Bath free standing Tub with separate walk in Shower, Vanity with dual sinks and mirrored Medicine Cabinets with side lighting. The unit features a spacious Den and large Laundry room with Electrolux Washer/Dryer with Pedestal Drawers, and built in folding table. Very convenient level parking stall on the 2nd floor. Enjoy the building's resort-like amenities including large Fitness Center, Sauna & Steam room, Dog Park, Meeting/Party Room, Patio, Glass-Bottom Infinity Pool with Cabanas, Hot Tub, BBQ's, Playground, Tennis court, Volleyball, Putting Green, Golf Simulator, and Billiards room. 24-hour Security & Concierge. Bicycle & Surfboard storage. Enjoy the Friday night Fireworks from your window. Ala Moana Beach and Park, Ala Moana Shopping Center, Ward Movie theaters, Whole Foods, Urgent Care, and popular restaurants are all within walking distance! **Sale Conditions:** None **Schools:** [Kaahumanu](#), [Stevenson](#), [Mckinley](#) \* [Request Showing](#), [Photos](#), [History](#), [Maps](#), [Deed](#), [Watch List](#), [Tax Info](#)





Address	Price	Bd & Bth	Living / Avg.	Land   Avg.	Lanai	Occ.	FL	DOM
<a href="#">1108 Auahi Street 1102</a>	<a href="#">\$2,650,000</a>	2 & 2/0	1,704   \$1,555	0   \$inf	0	69%	11	135

Address	Tax   Maint.   Ass.	Assessed Land	Assessed Building	Assessed Total	Ratio	Year & Remodeled
<a href="#">1108 Auahi Street 1102</a>	\$613   \$2,718   \$0	\$84,300	\$2,177,800	\$2,262,100	117%	2017 & NA

[1108 Auahi Street 1102](#) - MLS#: [202328316](#) - Elegant large 2Bd 2Ba 1704 SqFt favored 02 unit in the Luxurious Anaha Condominium at Ward Village. The kitchen has top line Miele appliances with gas stovetop, Wine cooler. Beautiful living room/entry hardwood floor, bedroom carpet, tile baths and floor to ceiling windows. Primary Bath free standing Tub with separate walk in Shower, Vanity with dual sinks and mirrored Medicine Cabinets with side lighting. The unit features a spacious Den and large Laundry room with Electrolux Washer/Dryer with Pedestal Drawers, and built in folding table. Very convenient level parking stall on the 2nd floor. Enjoy the building's resort-like amenities including large Fitness Center, Sauna & Steam room, Dog Park, Meeting/Party Room, Patio, Glass-Bottom Infinity Pool with Cabanas, Hot Tub, BBQ's, Playground, Tennis court, Volleyball, Putting Green, Golf Simulator, and Billiards room. 24-hour Security & Concierge. Bicycle & Surfboard storage. Enjoy the Friday night Fireworks from your window. Ala Moana Beach and Park, Ala Moana Shopping Center, Ward Movie theaters, Whole Foods, Urgent Care, and popular restaurants are all within walking distance! **Region:** Metro **Neighborhood:** Kakaako **Condition:** Excellent **Parking:** Assigned, Covered - 1, Guest, Secured Entry **Total Parking:** 1 **View:** City, Coastline, Diamond Head, Ocean, Sunrise **Frontage:** Other **Pool:** **Zoning:** Kak - Kakaako Community Development Project **Sale Conditions:** None **Schools:** [Kaahumanu](#), [Stevenson](#), [Mckinley](#) \* [Request Showing](#), [Photos](#), [History](#), [Maps](#), [Deed](#), [Watch List](#), [Tax Info](#)

DOM = Days on Market, Occ. = Occupancy, FL = Floor Number