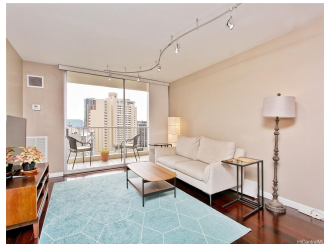


**Villa On Eaton Square 400 Hobron Lane Unit 1605, Honolulu 96815 \* Villa On Eaton Square**

**\* \$540,000 \* Originally \$575,000**

Beds: <b>1</b>	MLS#: <b>202328325, FS</b>	Year Built: <b>1974</b>
Bath: <b>1/0</b>	Status: <b>Active</b>	Remodeled: <b>2017</b>
Living Sq. Ft.: <b>681</b>	List Date & DOM: <b>01-02-2024 &amp; 132</b>	Total Parking: <b>1</b>
Land Sq. Ft.: <b>104,718</b>	Condition: <b>Excellent</b>	<a href="#">Assessed Value</a>
Lanai Sq. Ft.: <b>58</b>	Frontage:	Building: <b>\$407,900</b>
Sq. Ft. Other: <b>0</b>	Tax/Year: <b>\$133/2024</b>	Land: <b>\$70,700</b>
Total Sq. Ft. <b>739</b>	Neighborhood: <b>Waikiki</b>	Total: <b>\$478,600</b>
Maint./Assoc. <b>\$982 / \$0</b>	<a href="#">Flood Zone</a> : <b>Zone AO - Tool</b>	Stories / CPR: <b>21+ / No</b>
Parking: <b>Assigned, Garage</b>	Frontage:	
<a href="#">Zoning</a> : <b>X2 - Apartment Precinct</b>	View: <b>City, Coastline, Mountain</b>	

**Public Remarks:** Gorgeous turn-key designer-remodeled unit with pleasant views from the usable lanai. \$50K+ extensive quality upgrades with quartz counters, induction oven, stainless steel appliances, designer cabinets, keyless entry, engineered hardwood floors, plus a fabulous travertine/glass shower enclosure. The asbestos popcorn ceiling was removed for a smooth finished look. Updated electrical and plumbing in 2014 with two extra shut-off valves. Rebuilt A/C unit with new condenser, vents & thermostat. Full-size W/D and lots of storage. You will love this best-value unit. Includes quality furniture. It comes with an extra storage locker in the garage and one unassigned parking stall. Enjoy resort-style rooftop amenities with panoramic 180-degree views of Honolulu, featuring a heated pool, BBQ grills, sauna, gym, and yoga room. Entertain in style and watch Waikiki fireworks. Close to Waikiki Beach and yet this part of Waikiki feels residential with a little park, several restaurants, and a fully stacked supermarket close by. World-class shopping at the Ala Moana Shopping Center. - The building features 24-hour security and is pet-friendly too! ~ Make this your new home in paradise. **Sale Conditions:** None  
**Schools:** , , \* [Request Showing](#), [Photos](#), [History](#), [Maps](#), [Deed](#), [Watch List](#), [Tax Info](#)



Address	Price	Bd & Bth	Living / Avg.	Land   Avg.	Lanai	Occ.	FL	DOM
<a href="#">400 Hobron Lane 1605</a>	<b>\$540,000</b>	1 & 1/0	681   \$793	104,718   \$5	58	48%	16	132

Address	Tax   Maint.   Ass.	Assessed Land	Assessed Building	Assessed Total	Ratio	Year & Remodeled
<a href="#">400 Hobron Lane 1605</a>	\$133   \$982   \$0	\$70,700	\$407,900	\$478,600	113%	1974 & 2017

<b>400 Hobron Lane 1605</b> - MLS#: <b>202328325</b> - Original price was \$575,000 - Gorgeous turn-key designer-remodeled unit with pleasant views from the usable lanai. \$50K+ extensive quality upgrades with quartz counters, induction oven, stainless steel appliances, designer cabinets, keyless entry, engineered hardwood floors, plus a fabulous travertine/glass shower enclosure. The asbestos popcorn ceiling was removed for a smooth finished look. Updated electrical and plumbing in 2014 with two extra shut-off valves. Rebuilt A/C unit with new condenser, vents & thermostat. Full-size W/D and lots of storage. You will love this best-value unit. Includes quality furniture. It comes with an extra storage locker in the garage and one unassigned parking stall. Enjoy resort-style rooftop amenities with panoramic 180-degree views of Honolulu, featuring a heated pool, BBQ grills, sauna, gym, and yoga room. Entertain in style and watch Waikiki fireworks. Close to Waikiki Beach and yet this part of Waikiki feels residential with a little park, several restaurants, and a fully stacked supermarket close by. World-class shopping at the Ala Moana Shopping Center. - The building features 24-hour security and is pet-friendly too! ~ Make this your new home in paradise. <b>Region:</b> Metro <b>Neighborhood:</b> Waikiki <b>Condition:</b> Excellent <b>Parking:</b> Assigned, Garage <b>Total Parking:</b> 1 <b>View:</b> City, Coastline, Mountain <b>Frontage:</b> <b>Pool:</b> <b>Zoning:</b> X2 - Apartment Precinct <b>Sale Conditions:</b> None <b>Schools:</b> , , * <a href="#">Request Showing</a> , <a href="#">Photos</a> , <a href="#">History</a> , <a href="#">Maps</a> , <a href="#">Deed</a> , <a href="#">Watch List</a> , <a href="#">Tax Info</a>
--

DOM = Days on Market, Occ. = Occupancy, FL = Floor Number