

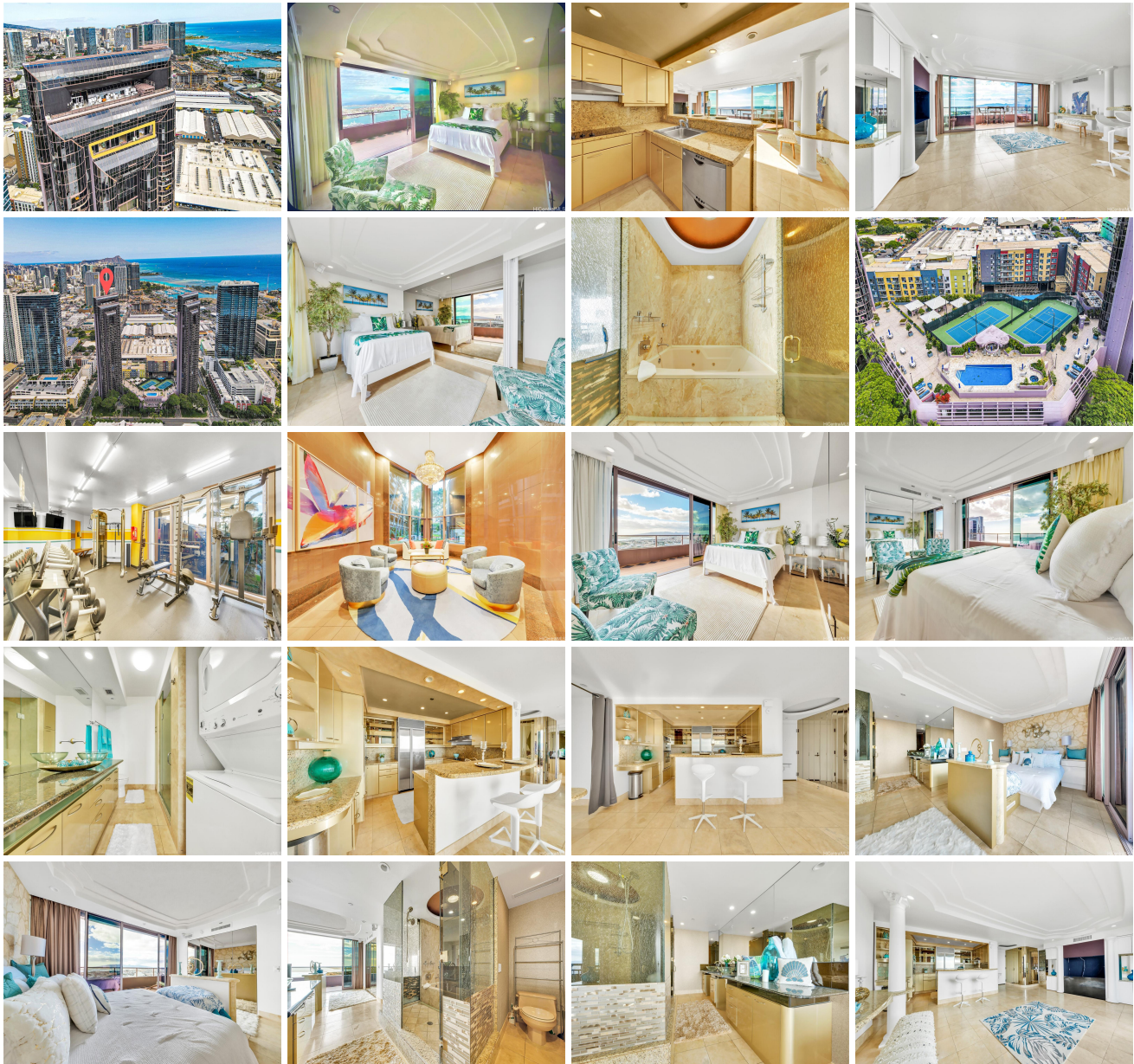
**One Waterfront Tower 425 South Street Unit 4002, Honolulu 96813 \* One Waterfront Tower \* \$1,300,000**

Beds: <b>2</b>	MLS#: <b><u>202328350</u>, FS</b>	Year Built: <b>1989</b>
Bath: <b>2/0</b>	Status: <b>Active</b>	Remodeled:
Living Sq. Ft.: <b>1,188</b>	List Date & DOM: <b>02-25-2024 &amp; 74</b>	Total Parking: <b>2</b>
Land Sq. Ft.: <b>106,548</b>	Condition: <b>Excellent</b>	<a href="#">Assessed Value</a>
Lanai Sq. Ft.: <b>376</b>	Frontage: <b>Other</b>	Building: <b>\$684,400</b>
Sq. Ft. Other: <b>0</b>	Tax/Year: <b>\$226/2023</b>	Land: <b>\$88,800</b>
Total Sq. Ft. <b>1,564</b>	Neighborhood: <b>Kakaako</b>	Total: <b>\$773,200</b>
Maint./Assoc. <b>\$1,141 / \$0</b>	<a href="#">Flood Zone</a> : <b>Zone X - Tool</b>	Stories / CPR: <b>21+ / No</b>
Parking: <b>Assigned, Covered - 2, Guest, Secured Entry</b>	Frontage: <b>Other</b>	

**Zoning: 21 - Resort District**

**View: Coastline, Diamond Head, Mountain, Ocean, Sunset**

**Public Remarks:** Situated like a Penthouse on the 40th floor, this sky-high prime property features a spacious 2-bedroom, 2-bath, and 2-parking unit adorned with marble and travertine. Its lanai stretches across the entire condo length, providing panoramic vistas of vibrant Hawaiian skies and the mesmerizing blue sapphire ocean. Residents enjoy dramatic awe-inspiring sunsets and mountains in this extraordinary deluxe haven in the clouds. Interior elegance with spacious rooms and spectacular views. The luxury kitchen and baths have undergone upscale renovations, adding a touch of opulence. Modern amenities include an exercise room, a massive heated pool, a vast recreation deck, sauna, spa, tennis courts, BBQ cabanas, and outdoor lounging areas with gas-flame fire pits. Near Kakaako, Waikiki, Downtown Honolulu, Restaurant Row, SALT, South Shore Market, Ala Moana Beach Park and Shopping Center. Own a piece of paradise at One Waterfront Tower. **Sale Conditions:** None **Schools:** , \* [Request Showing](#), [Photos](#), [History](#), [Maps](#), [Deed](#), [Watch List](#), [Tax Info](#)





Address	Price	Bd & Bth	Living / Avg.	Land   Avg.	Lanai	Occ.	FL	DOM
<a href="#">425 South Street 4002</a>	<a href="#">\$1,300,000</a>	2 & 2/0	1,188   \$1,094	106,548   \$12	376	63%	40	74

Address	Tax   Maint.   Ass.	Assessed Land	Assessed Building	Assessed Total	Ratio	Year & Remodeled
<a href="#">425 South Street 4002</a>	\$226   \$1,141   \$0	\$88,800	\$684,400	\$773,200	168%	1989 & NA

[425 South Street 4002](#) - MLS#: [202328350](#) - Situated like a Penthouse on the 40th floor, this sky-high prime property features a spacious 2-bedroom, 2-bath, and 2-parking unit adorned with marble and travertine. Its lanai stretches across the entire condo length, providing panoramic vistas of vibrant Hawaiian skies and the mesmerizing blue sapphire ocean. Residents enjoy dramatic awe-inspiring sunsets and mountains in this extraordinary deluxe haven in the clouds. Interior elegance with spacious rooms and spectacular views. The luxury kitchen and baths have undergone upscale renovations, adding a touch of opulence. Modern amenities include an exercise room, a massive heated pool, a vast recreation deck, sauna, spa, tennis courts, BBQ cabanas, and outdoor lounging areas with gas-flame fire pits. Near Kakaako, Waikiki, Downtown Honolulu, Restaurant Row, SALT, South Shore Market, Ala Moana Beach Park and Shopping Center. Own a piece of paradise at One Waterfront Tower. **Region:** Metro **Neighborhood:** Kakaako **Condition:** Excellent **Parking:** Assigned, Covered - 2, Guest, Secured Entry **Total Parking:** 2 **View:** Coastline, Diamond Head, Mountain, Ocean, Sunset **Frontage:** Other **Pool:** **Zoning:** 21 - Resort District **Sale Conditions:** None **Schools:** , , \* [Request Showing](#), [Photos](#), [History](#), [Maps](#), [Deed](#), [Watch List](#), [Tax Info](#)

DOM = Days on Market, Occ. = Occupancy, FL = Floor Number