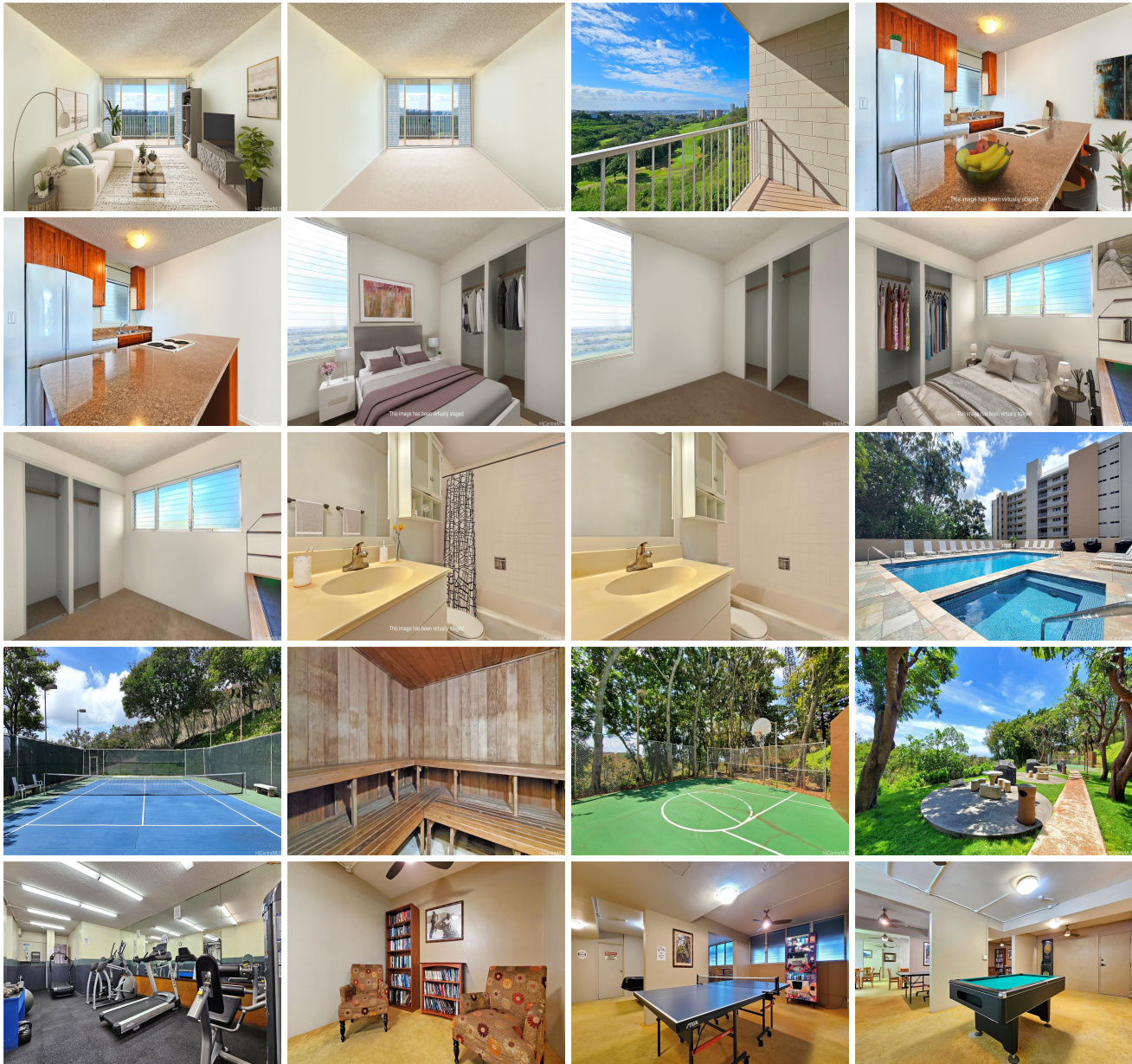
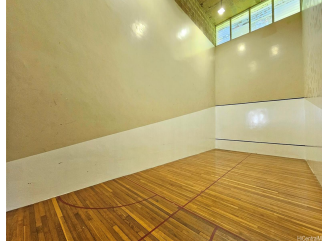


**Colonnade on the Greens 98-719 Iho Place Unit 5-602, Aiea 96701 \* Colonnade on the Greens \* \$475,000**

Beds: <b>2</b>	MLS#: <b>202400115, FS</b>	Year Built: <b>1976</b>
Bath: <b>2/0</b>	Status: <b>Active</b>	Remodeled:
Living Sq. Ft.: <b>805</b>	List Date & DOM: <b>01-02-2024 &amp; 127</b>	Total Parking: <b>2</b>
Land Sq. Ft.: <b>0</b>	Condition: <b>Average</b>	<a href="#">Assessed Value</a>
Lanai Sq. Ft.: <b>91</b>	Frontage:	Building: <b>\$349,700</b>
Sq. Ft. Other: <b>0</b>	Tax/Year: <b>\$136/2023</b>	Land: <b>\$115,300</b>
Total Sq. Ft. <b>896</b>	Neighborhood: <b>Pearlridge</b>	Total: <b>\$465,000</b>
Maint./Assoc. <b>\$855 / \$0</b>	<a href="#">Flood Zone</a> : <b>Zone D - Tool</b>	Stories / CPR: / <b>No</b>
Parking: <b>Assigned, Covered - 1, Guest, Open - 1, Secured Entry</b>	Frontage:	
<a href="#">Zoning</a> : <b>11 - A-1 Low Density Apartment</b>	View: <b>Golf Course</b>	

**Public Remarks:** Here's your opportunity to own in highly desirable Colonnade on the Greens with great security, excellent amenities, and beautiful golf course and Pearl Harbor views. This cool, quiet and spacious 2-bedroom unit has a large, usable lanai, an open kitchen, and the convenience of two full baths. Enjoy the benefits of having two parking stalls, one of which is on the same level as your unit, so there's no need for stairs or elevators for this one stall. The second stall is covered and is also conveniently located. The long list of amenities includes tennis, pickleball, and racquetball courts, pool, fitness center, sauna, playground, driving range, putting green, barbecue and basketball areas, party room with ping pong, billiards, and dart board, library, and storage locker. There's something for everyone. Best of all is the great location, convenient to everything you need--shopping, dining, entertainment, hospital, schools, bus stops, freeway accesses. It's got everything you could want...and more! **Sale Conditions:** None **Schools:** [Pearl Ridge](#), [Aiea](#), [Aiea](#) \* [Request Showing](#), [Photos](#), [History](#), [Maps](#), [Deed](#), [Watch List](#), [Tax Info](#)





Address	Price	Bd & Bth	Living / Avg.	Land   Avg.	Lanai	Occ.	FL	DOM
<a href="#">98-719 Iho Place 5-602</a>	<a href="#">\$475,000</a>	2 & 2/0	805   \$590	0   \$inf	91	66%	6	127

Address	Tax   Maint.   Ass.	Assessed Land	Assessed Building	Assessed Total	Ratio	Year & Remodeled
<a href="#">98-719 Iho Place 5-602</a>	\$136   \$855   \$0	\$115,300	\$349,700	\$465,000	102%	1976 & NA

[98-719 Iho Place 5-602](#) - MLS#: [202400115](#) - Here's your opportunity to own in highly desirable Colonnade on the Greens with great security, excellent amenities, and beautiful golf course and Pearl Harbor views. This cool, quiet and spacious 2-bedroom unit has a large, usable lanai, an open kitchen, and the convenience of two full baths. Enjoy the benefits of having two parking stalls, one of which is on the same level as your unit, so there's no need for stairs or elevators for this one stall. The second stall is covered and is also conveniently located. The long list of amenities includes tennis, pickleball, and racquetball courts, pool, fitness center, sauna, playground, driving range, putting green, barbecue and basketball areas, party room with ping pong, billiards, and dart board, library, and storage locker. There's something for everyone. Best of all is the great location, convenient to everything you need--shopping, dining, entertainment, hospital, schools, bus stops, freeway accesses. It's got everything you could want...and more! **Region:** Pearl City **Neighborhood:** Pearlridge **Condition:** Average **Parking:** Assigned, Covered - 1, Guest, Open - 1, Secured Entry **Total Parking:** 2 **View:** Golf Course **Frontage:** **Pool:** **Zoning:** 11 - A-1 Low Density Apartment **Sale Conditions:** None **Schools:** [Pearl Ridge](#), [Aiea](#), [Aiea](#) \* [Request Showing](#), [Photos](#), [History](#), [Maps](#), [Deed](#), [Watch List](#), [Tax Info](#)

DOM = Days on Market, Occ. = Occupancy, FL = Floor Number