

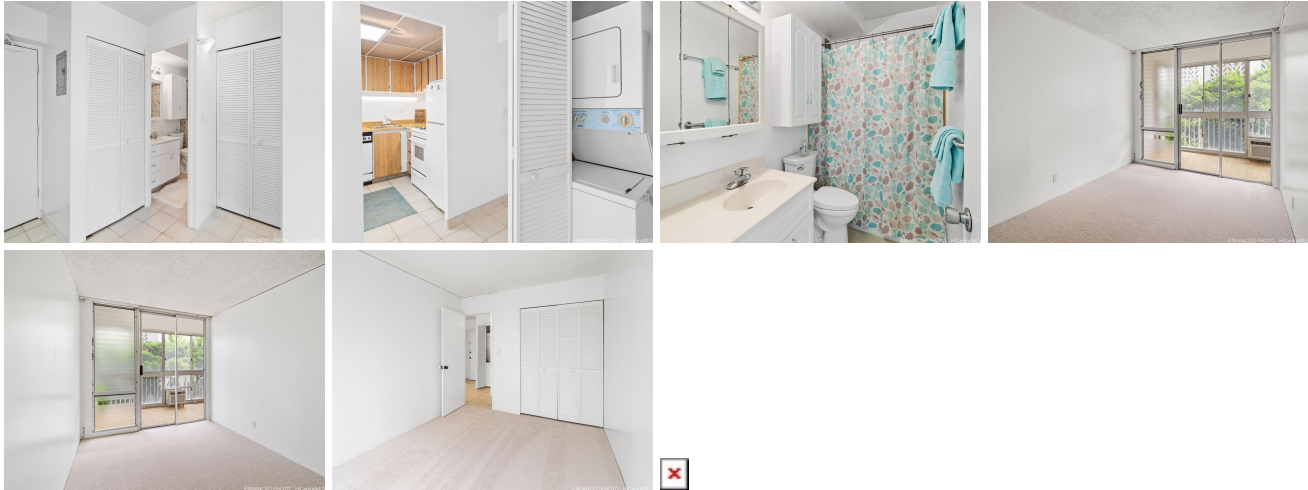
Atkinson Plaza 475 Atkinson Drive Unit 601, Honolulu 96814 * Atkinson Plaza * \$365,000 *

Originally \$379,000

Beds: 1	MLS#: 202400130, FS	Year Built: 1979
Bath: 1/0	Status: Active Under Contract	Remodeled:
Living Sq. Ft.: 587	List Date & DOM: 01-02-2024 & 109	Total Parking: 1
Land Sq. Ft.: 17,860	Condition: Average	Assessed Value
Lanai Sq. Ft.: 182	Frontage:	Building: \$356,100
Sq. Ft. Other: 0	Tax/Year: \$84/2024	Land: \$39,700
Total Sq. Ft. 769	Neighborhood: Ala Moana	Total: \$395,800
Maint./Assoc. \$976 / \$0	Flood Zone : Zone AE - Tool	Stories / CPR: 15-20 / No
Parking: Assigned, Covered - 1, Garage, Secured Entry, Street	Frontage:	
Zoning : 12 - A-2 Medium Density Apartme	View: City, Mountain	

Public Remarks: Welcome to your urban retreat in the heart of Honolulu at Atkinson Plaza! This recently repainted 1-bedroom condo with new carpet offers a fresh and inviting atmosphere. Enjoy the comfort of air conditioning and a unique Birds Eye view through the enclosed lanai that adds a touch of charm to your additional interior living space. Convenience is key with secured entrance, Resident Manager, video surveillance, washer/dryer in unit, gas range, and one secured and covered parking space, providing peace of mind and easy access. Situated strategically, this residence offers proximity to the vibrant scenes of Waikiki and the diverse shopping, entertainment and dining experiences of Ala Moana. Enjoy all the amenities that Atkinson Plaza has to offer, including a rooftop pool, deck, sauna, BBQ, dining area, and a tennis court. Nearby attractions include the Hawaii Convention Center and the iconic Ala Moana Center, perfect for indulging in retail therapy and culinary delights. From local favorites to international cuisine, your dining options are diverse & enticing. Closely situated to Ala Moana Beach, where sunsets paint the sky w/ breathtaking hues. This gem is ready to be yours! **Sale Conditions:** None
Schools: , , * [Request Showing](#), [Photos](#), [History](#), [Maps](#), [Deed](#), [Watch List](#), [Tax Info](#)





Address	Price	Bd & Bth	Living / Avg.	Land Avg.	Lanai	Occ.	FL	DOM
475 Atkinson Drive 601	\$365,000	1 & 1/0	587 \$622	17,860 \$20	182	45%	6	109

Address	Tax Maint. Ass.	Assessed Land	Assessed Building	Assessed Total	Ratio	Year & Remodeled
475 Atkinson Drive 601	\$84 \$976 \$0	\$39,700	\$356,100	\$395,800	92%	1979 & NA

[475 Atkinson Drive 601](#) - MLS#: [202400130](#) - Original price was \$379,000 - Welcome to your urban retreat in the heart of Honolulu at Atkinson Plaza! This recently repainted 1-bedroom condo with new carpet offers a fresh and inviting atmosphere. Enjoy the comfort of air conditioning and a unique Birds Eye view through the enclosed lanai that adds a touch of charm to your additional interior living space. Convenience is key with secured entrance, Resident Manager, video surveillance, washer/dryer in unit, gas range, and one secured and covered parking space, providing peace of mind and easy access. Situated strategically, this residence offers proximity to the vibrant scenes of Waikiki and the diverse shopping, entertainment and dining experiences of Ala Moana. Enjoy all the amenities that Atkinson Plaza has to offer, including a rooftop pool, deck, sauna, BBQ, dining area, and a tennis court. Nearby attractions include the Hawaii Convention Center and the iconic Ala Moana Center, perfect for indulging in retail therapy and culinary delights. From local favorites to international cuisine, your dining options are diverse & enticing. Closely situated to Ala Moana Beach, where sunsets paint the sky w/ breathtaking hues. This gem is ready to be yours! **Region:** Metro **Neighborhood:** Ala Moana **Condition:** Average **Parking:** Assigned, Covered - 1, Garage, Secured Entry, Street **Total Parking:** 1 **View:** City, Mountain **Frontage:** Pool: **Zoning:** 12 - A-2 Medium Density Apartme **Sale Conditions:** None **Schools:** , , * [Request Showing](#), [Photos](#), [History](#), [Maps](#), [Deed](#), [Watch List](#), [Tax Info](#)

DOM = Days on Market, Occ. = Occupancy, FL = Floor Number