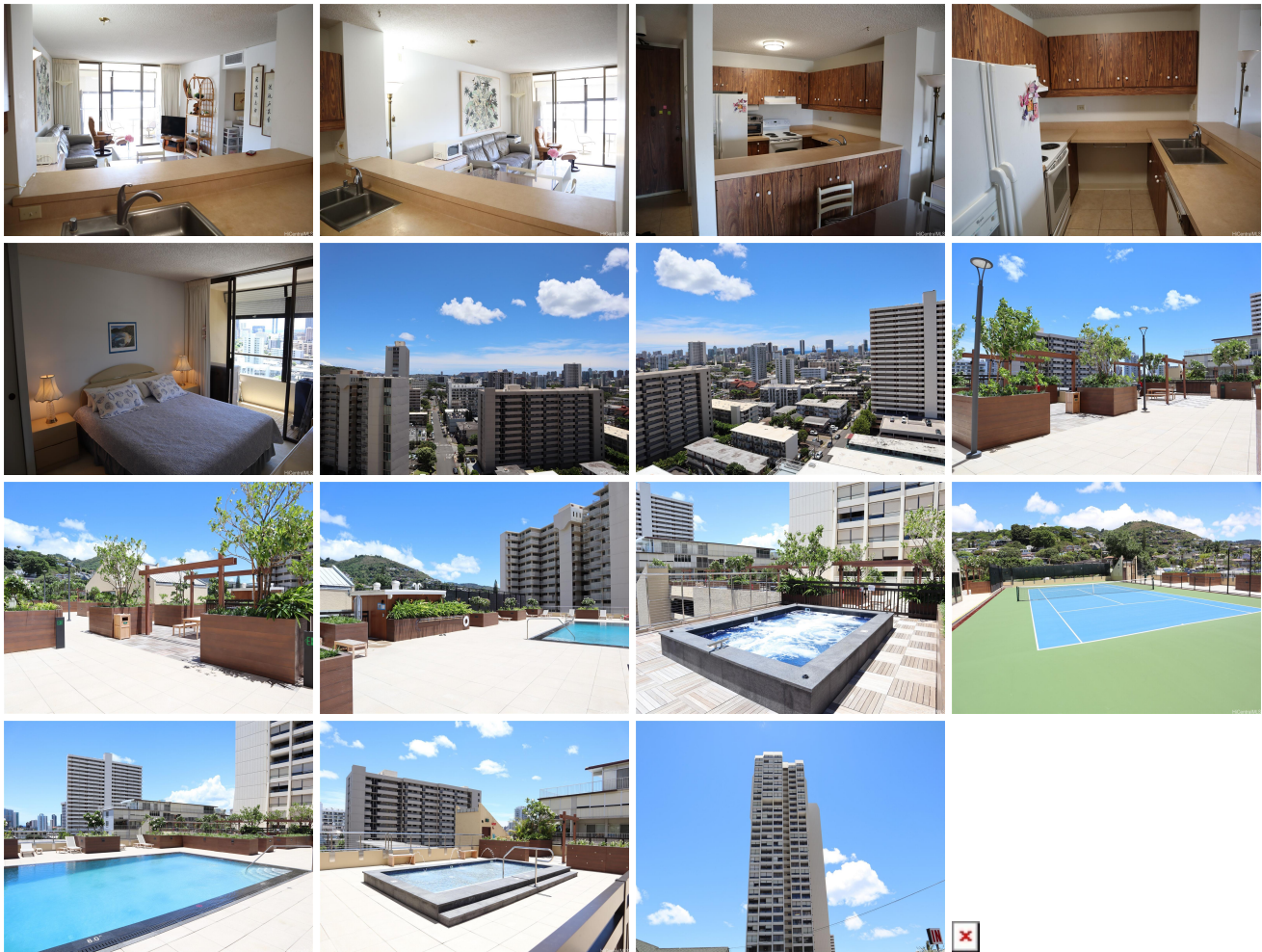


MOTT-SMITH LANILOA 1717 Mott Smith Drive Unit 1513, Honolulu 96822 * MOTT-SMITH**LANILOA * \$549,000**

Beds: 2	MLS#: 202400388, FS	Year Built: 1976
Bath: 2/0	Status: Active	Remodeled:
Living Sq. Ft.: 882	List Date & DOM: 02-05-2024 & 94	Total Parking: 2
Land Sq. Ft.: 113,082	Condition: Average	Assessed Value
Lanai Sq. Ft.: 275	Frontage:	Building: \$446,300
Sq. Ft. Other: 0	Tax/Year: \$159/2023	Land: \$63,200
Total Sq. Ft. 1,157	Neighborhood: Makiki Area	Total: \$509,500
Maint./Assoc. \$1,579 / \$0	Flood Zone : Zone X - Tool	Stories / CPR: 21+ / No
Parking: Assigned, Covered - 2, Secured Entry	Frontage:	
Zoning : 12 - A-2 Medium Density Apartme	View: City, Ocean	

Public Remarks: Our very limited unit in central Honolulu is located none other than the lovely condominium Mott-Smith Laniloa! The featured unit offers 2 bedrooms and 2 bathrooms with 2 assigned parking stalls that is covered indoors in the garage. The Mott-Smith Laniloa condo is located close to convenient locations, such as Roosevelt Highschool, Ala Moana Shopping Center, and the freeway exits. The unit is on the 15th floor which offers an incredible view of the Honolulu Skyline and offers cool winds. The unit also comes with great amenities, such as Tennis Courts, a Pool, and Barbeque Stalls! Please do come by if you are interested! **Sale Conditions:** None **Schools:** [Lincoln](#), [Stevenson](#), [Roosevelt](#) * [Request Showing](#), [Photos](#), [History](#), [Maps](#), [Deed](#), [Watch List](#), [Tax Info](#)



Address	Price	Bd & Bth	Living / Avg.	Land Avg.	Lanai	Occ.	FL	DOM
1717 Mott Smith Drive 1513	\$549,000	2 & 2/0	882 \$622	113,082 \$5	275	53%	15	94

Address	Tax Maint. Ass.	Assessed Land	Assessed Building	Assessed Total	Ratio	Year & Remodeled
1717 Mott Smith Drive 1513	\$159 \$1,579 \$0	\$63,200	\$446,300	\$509,500	108%	1976 & NA

[1717 Mott Smith Drive 1513](#) - MLS#: [202400388](#) - Our very limited unit in central Honolulu is located none other than the lovely condominium Mott-Smith Laniloa! The featured unit offers 2 bedrooms and 2 bathrooms with 2 assigned parking stalls that is covered indoors in the garage. The Mott-Smith Laniloa condo is located close to convenient locations, such as Roosevelt Highschool, Ala Moana Shopping Center, and the freeway exits. The unit is on the 15th floor which offers an incredible view of the Honolulu Skyline and offers cool winds. The unit also comes with great amenities, such as Tennis Courts, a Pool, and Barbeque Stalls! Please do come by if you are interested! **Region:** Metro **Neighborhood:** Makiki Area **Condition:** Average **Parking:** Assigned, Covered - 2, Secured Entry **Total Parking:** 2 **View:** City, Ocean **Frontage:** **Pool:** **Zoning:** 12 - A-2 Medium Density Apartme **Sale Conditions:** None **Schools:** [Lincoln](#), [Stevenson](#), [Roosevelt](#) * [Request Showing](#), [Photos](#), [History](#), [Maps](#), [Deed](#), [Watch List](#), [Tax Info](#)

DOM = Days on Market, Occ. = Occupancy, FL = Floor Number