

## **Yacht Harbor Towers 1650 Ala Moana Boulevard Unit 3301, Honolulu 96815 \* Yacht Harbor**

**Towers \* \$1,750,000**

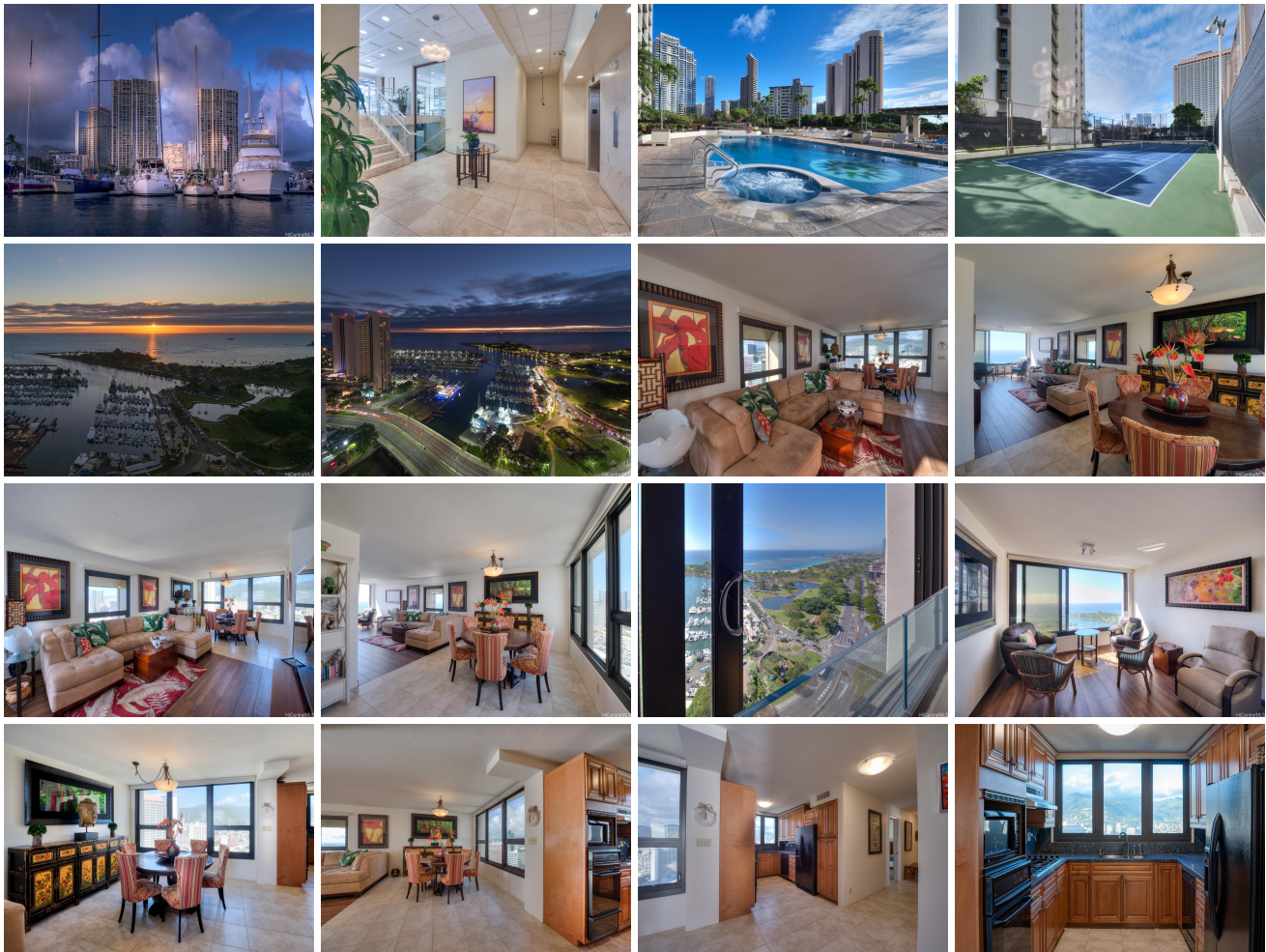
Beds: <b>3</b>	MLS#: <b><u>202400586</u>, FS</b>	Year Built: <b>1973</b>
Bath: <b>3/0</b>	Status: <b>Active</b>	Remodeled: <b>2021</b>
Living Sq. Ft.: <b>2,006</b>	List Date & DOM: <b>01-24-2024 &amp; 110</b>	Total Parking: <b>2</b>
Land Sq. Ft.: <b>138,216</b>	Condition: <b>Excellent</b>	<a href="#">Assessed Value</a>
Lanai Sq. Ft.: <b>0</b>	Frontage: <b>Other, Stream/Canal</b>	Building: <b>\$1,735,500</b>
Sq. Ft. Other: <b>0</b>	Tax/Year: <b>\$832/2024</b>	Land: <b>\$91,100</b>
Total Sq. Ft. <b>2,006</b>	Neighborhood: <b>Ala Moana</b>	Total: <b>\$1,826,600</b>
Maint./Assoc. <b>\$2,108 / \$626</b>	<a href="#">Flood Zone</a> : <b>Zone AE - <u>Tool</u></b>	Stories / CPR: <b>21+ / No</b>
Parking: <b>Assigned, Covered - 2, Garage, Guest, Tandem</b>	Frontage: <b>Other, Stream/Canal</b>	

[Zoning](#): **12 - A-2 Medium Density Apartme**

View: **City, Coastline, Garden, Marina/Canal, Mountain, Ocean, Other, Sunrise, Sunset**

**Public Remarks:** Exquisitely Beautiful and Rare 3 Bedroom, 3 Bath HIGHLY & RECENTLY UPGRADED Apartment in First Class Luxury Building with Breathtakingly Stunning Views of Ocean, Coastline, Magic Island, Yacht Clubs, Marinas, Beaches, Parks, Mountains and Sunsets. Yacht Harbor Towers is the Very Best Location possible, and is known as The King of the Boulevard. 2 Bedrooms, Living Room and Dining Room Overlook the Yachting Channel where small yachts and boats sail or motor out to Sea or to Diamond Head. Extensively, Expertly Renovated with Gorgeous upgrades and details. Truly must see to appreciate the beauty. Tandem Parking Stalls are set apart in Garage, with their own private Enclosure Area near the Building entrance. There are two large Primary Suites -each with its own Bathroom and Sublime Ocean Views. Third Bedroom has glorious Mountain Views and Bathroom. Each bedroom is distanced from the others, and therefore Serene. Wonderful Furnishings are included, if desired, encompassing everything one needs to live well. Yacht Harbor Towers sits at bank of the Ala Wai Canal, where Outrigger Canoe Teams practice for their races....at the entrance to Waikiki. Come and See this Desirable Gem!! Aloha

**Sale Conditions:** None **Schools:** , , \* [Request Showing](#), [Photos](#), [History](#), [Maps](#), [Deed](#), [Watch List](#), [Tax Info](#)





Address	Price	Bd & Bth	Living / Avg.	Land   Avg.	Lanai	Occ.	FL	DOM
<a href="#">1650 Ala Moana Boulevard 3301</a>	<a href="#">\$1,750,000</a>	3 & 3/0	2,006   \$872	138,216   \$13	0	54%	33	110

Address	Tax   Maint.   Ass.	Assessed Land	Assessed Building	Assessed Total	Ratio	Year & Remodeled
<a href="#">1650 Ala Moana Boulevard 3301</a>	\$832   \$2,108   \$626	\$91,100	\$1,735,500	\$1,826,600	96%	1973 & 2021

[1650 Ala Moana Boulevard 3301](#) - MLS#: [202400586](#) - Exquisitely Beautiful and Rare 3 Bedroom, 3 Bath HIGHLY & RECENTLY UPGRADED Apartment in First Class Luxury Building with Breathtakingly Stunning Views of Ocean, Coastline, Magic Island, Yacht Clubs, Marinas, Beaches, Parks, Mountains and Sunsets. Yacht Harbor Towers is the Very Best Location possible, and is known as The King of the Boulevard. 2 Bedrooms, Living Room and Dining Room Overlook the Yachting Channel where small yachts and boats sail or motor out to Sea or to Diamond Head. Extensively, Expertly Renovated with Gorgeous upgrades and details. Truly must see to appreciate the beauty. Tandem Parking Stalls are set apart in Garage, with their own private Enclosure Area near the Building entrance. There are two large Primary Suites -each with its own Bathroom and Sublime Ocean Views. Third Bedroom has glorious Mountain Views and Bathroom. Each bedroom is distanced from the others, and therefore Serene. Wonderful Furnishings are included, if desired, encompassing everything one needs to live well. Yacht Harbor Towers sits at bank of the Ala Wai Canal, where Outrigger Canoe Teams practice for their races....at the entrance to Waikiki. Come and See this Desirable Gem!! Aloha **Region:** Metro **Neighborhood:** Ala Moana **Condition:** Excellent **Parking:** Assigned, Covered - 2, Garage, Guest, Tandem **Total Parking:** 2 **View:** City, Coastline, Garden, Marina/Canal, Mountain, Ocean, Other, Sunrise, Sunset **Frontage:** Other,Stream/Canal **Pool:** **Zoning:** 12 - A-2 Medium Density Apartme **Sale Conditions:** None **Schools:** , , \* [Request Showing](#), [Photos](#), [History](#), [Maps](#), [Deed](#), [Watch List](#), [Tax Info](#)

DOM = Days on Market, Occ. = Occupancy, FL = Floor Number