

Sky Ala Moana West 1388 Kapiolani Boulevard Unit 4109, Honolulu 96814 * Sky Ala Moana

West * \$1,200,000 * Originally \$1,300,000

Beds: **2**

MLS#: **202400762, FS**

Year Built: **2023**

Bath: **2/0**

Status: **Active Under Contract**

Remodeled:

Living Sq. Ft.: **848**

List Date & DOM: **01-15-2024 & 85**

Total Parking: **2**

Land Sq. Ft.: **0**

Condition: **Excellent**

[Assessed Value](#)

Lanai Sq. Ft.: **84**

Frontage:

Building: **\$967,700**

Sq. Ft. Other: **0**

Tax/Year: **\$101/2023**

Land: **\$58,200**

Total Sq. Ft. **932**

Neighborhood: **Holiday Mart**

Total: **\$1,025,900**

Maint./Assoc. **\$1,113 / \$0**

[Flood Zone](#): **Zone X - Tool**

Stories / CPR: **21+ / No**

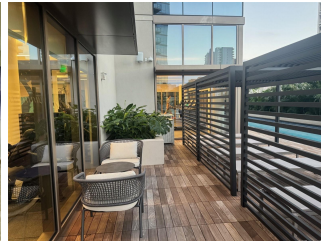
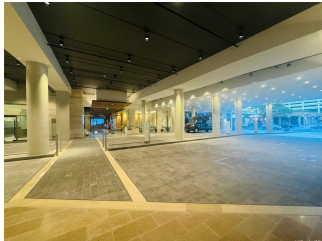
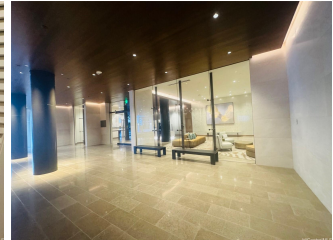
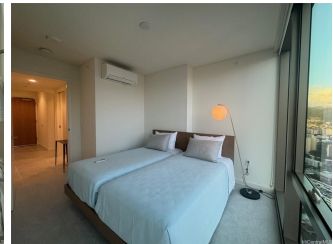
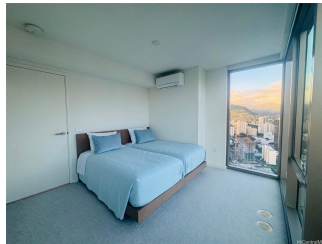
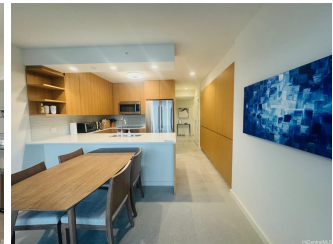
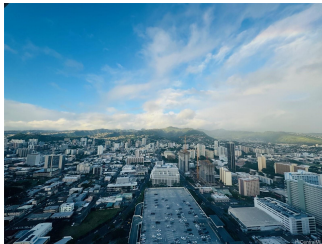
Parking: **Covered - 2**

Frontage:

[Zoning](#): **33 - BMX-3 Community Business M**

View: **City, Coastline, Mountain, Ocean, Sunrise**

Public Remarks: Highest floor corner unit facing East and North with fully furnished with all brand new furniture. This is the one of the newest luxury condo, unit is roomy and very bright from each room. Floor to ceiling windows beautiful views of city, mountains, and sparkling ocean. Walk to Ala Moana shopping center, close to many markets, restaurants. Very convenient and comfortable living with modern high-end finishes, and upgraded features like sophisticated Bosch appliances, and split Air Conditioning that welcomes you with a crisp, refreshing atmosphere each day. Lobby is also sophisticated modern taste that makes you great feeling. This unit comes with brand new furniture and window covering. Amenity also offers gathering rooms, most modern gym machines, a large pool, Jacuzzi, lap pool, BBQ areas, a dog park, and party rooms. 2 covered large size parking side by side. You will enjoy entire building call it your home. **Sale Conditions:** None **Schools:** [Kaahumanu](#), [Stevenson](#), [Mckinley](#) * [Request Showing](#), [Photos](#), [History](#), [Maps](#), [Deed](#), [Watch List](#), [Tax Info](#)





Address	Price	Bd & Bth	Living / Avg.	Land Avg.	Lanai	Occ.	FL	DOM
1388 Kapiolani Boulevard 4109	\$1,200,000	2 & 2/0	848 \$1,415	0 \$inf	84	0%	41	85

Address	Tax Maint. Ass.	Assessed Land	Assessed Building	Assessed Total	Ratio	Year & Remodeled
1388 Kapiolani Boulevard 4109	\$101 \$1,113 \$0	\$58,200	\$967,700	\$1,025,900	117%	2023 & NA

[1388 Kapiolani Boulevard 4109](#) - MLS#: [202400762](#) - Original price was \$1,300,000 - Highest floor corner unit facing East and North with fully furnished with all brand new furniture. This is the one of the newest luxury condo, unit is roomy and very bright from each room. Floor to ceiling windows beautiful views of city, mountains, and sparkling ocean. Walk to Ala Moana shopping center, close to many markets, restaurants. Very convenient and comfortable living with modern high-end finishes, and upgraded features like sophisticated Bosch appliances, and split Air Conditioning that welcomes you with a crisp, refreshing atmosphere each day. Lobby is also sophisticated modern taste that makes you great feeling. This unit comes with brand new furniture and window covering. Amenity also offers gathering rooms, most modern gym machines, a large pool, Jacuzzi, lap pool, BBQ areas, a dog park, and party rooms. 2 covered large size parking side by side. You will enjoy entire building call it your home. **Region:** Metro **Neighborhood:** Holiday Mart **Condition:** Excellent **Parking:** Covered - 2 **Total Parking:** 2 **View:** City, Coastline, Mountain, Ocean, Sunrise **Frontage:** **Pool:** **Zoning:** 33 - BMX-3 Community Business M **Sale Conditions:** None **Schools:** [Kaahumanu](#), [Stevenson](#), [Mckinley](#) * [Request Showing](#), [Photos](#), [History](#), [Maps](#), [Deed](#), [Watch List](#), [Tax Info](#)

DOM = Days on Market, Occ. = Occupancy, FL = Floor Number