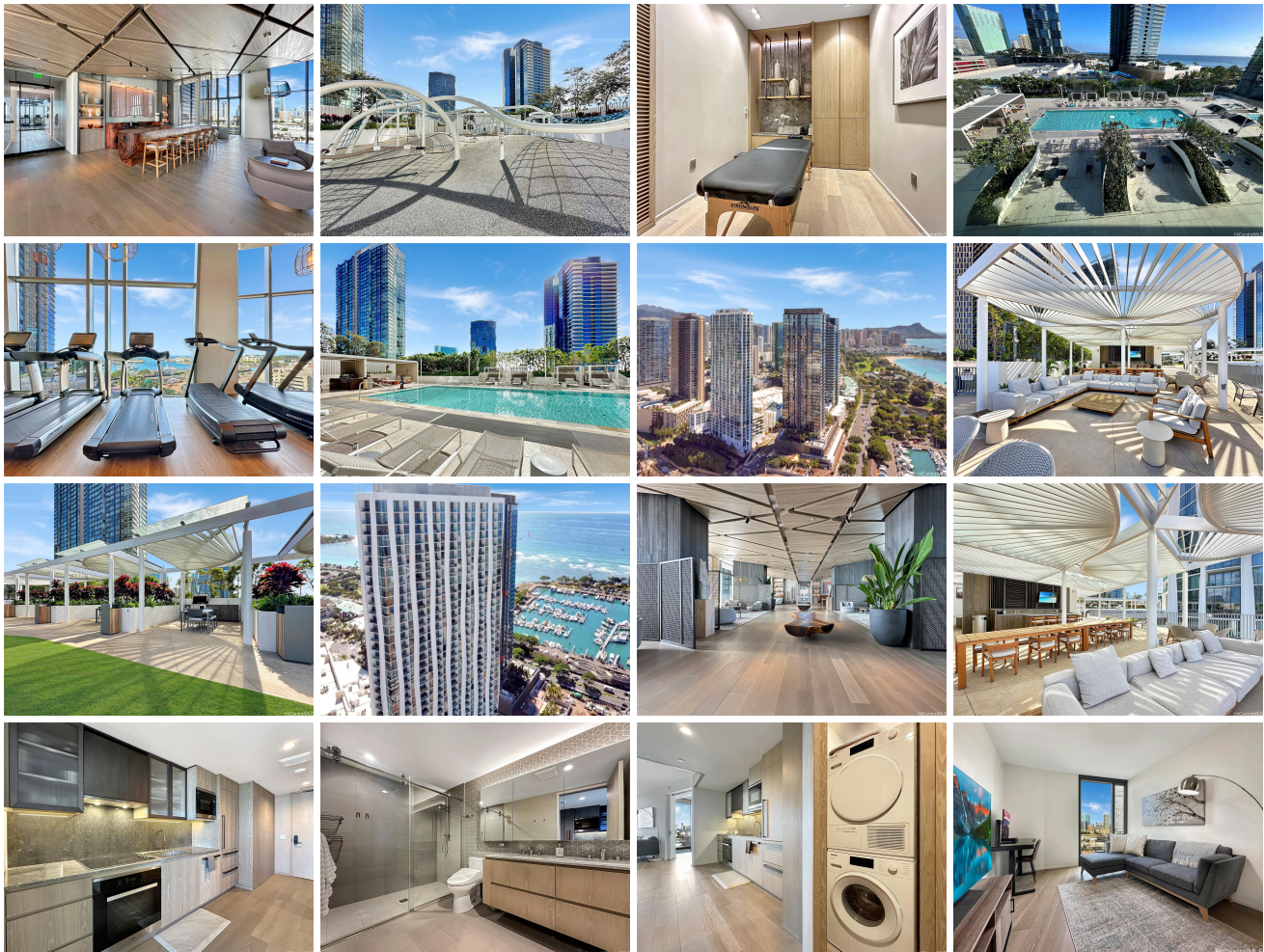


**Koula 1000 Auahi Street Unit 1011, Honolulu 96814 \* Koula \* \$895,000 \* Originally \$920,000**

Beds: <b>1</b>	MLS#: <b><u>202400830</u>, FS</b>	Year Built: <b>2022</b>
Bath: <b>1/0</b>	Status: <b>Active</b>	Remodeled:
Living Sq. Ft.: <b>509</b>	List Date & DOM: <b>01-15-2024 &amp; 115</b>	Total Parking: <b>1</b>
Land Sq. Ft.: <b>0</b>	Condition: <b>Excellent</b>	<a href="#">Assessed Value</a>
Lanai Sq. Ft.: <b>48</b>	Frontage:	Building: <b>\$754,000</b>
Sq. Ft. Other: <b>0</b>	Tax/Year: <b>\$235/2023</b>	Land: <b>\$26,200</b>
Total Sq. Ft. <b>557</b>	Neighborhood: <b>Kakaako</b>	Total: <b>\$780,200</b>
Maint./Assoc. <b>\$721 / \$0</b>	<a href="#">Flood Zone</a> : <b>Zone AE - Tool</b>	Stories / CPR: <b>21+ / No</b>
Parking: <b>Assigned</b>	Frontage:	
<a href="#">Zoning</a> : <b>Kak - Kakaako Community Development Project</b>	View: <b>City, Coastline, Garden, Mountain, Ocean</b>	

**Public Remarks:** Experience luxurious living at Ward Village's newest development, Ko'ula. Breathtaking sunsets await you in this serene 1BR condo; this well-designed unit is efficiently laid out to maximize the use of space. Floor-to-ceiling windows fill the space with natural light, while the spacious lanai offers sparkling ocean & city skyline views. With Miele appliances that blend seamlessly with custom cabinetry & wood flooring, creating a luxurious living space. Other impeccable designed features include custom electric blackout window treatments, Large walk-in shower, dual vanity countertop, large closets, washer & dryer laundry, covered parking & central AC. Many amazing amenities await you here, including large lap pool, spacious fully equipped fitness center, poolside cabanas, BBQ, Children's playground, guest suites, dog park, grand room, and many other areas to relax & entertain guests. Ko'ula features direct access to the exciting retail, restaurants & entertainment that Ward Village has to offer. Convenient walking distance to Whole Food store. Ala Moana Beach Park & Mall are all nearby. This unit is move-in ready with stylish furniture included. Great opportunity to be in this award-winning building. **Sale Conditions:** None **Schools:** , , \* [Request Showing](#), [Photos](#), [History](#), [Maps](#), [Deed](#), [Watch List](#), [Tax Info](#)





Address	Price	Bd & Bth	Living / Avg.	Land   Avg.	Lanai	Occ.	FL	DOM
<a href="#">1000 Auahi Street 1011</a>	<b>\$895,000</b>	1 & 1/0	509   \$1,758	0   \$inf	48	15%	10	115

Address	Tax   Maint.   Ass.	Assessed Land	Assessed Building	Assessed Total	Ratio	Year & Remodeled
<a href="#">1000 Auahi Street 1011</a>	\$235   \$721   \$0	\$26,200	\$754,000	\$780,200	115%	2022 & NA

[1000 Auahi Street 1011](#) - MLS#: [202400830](#) - Original price was \$920,000 - Experience luxurious living at Ward Village's newest development, Ko'ula. Breathtaking sunsets await you in this serene 1BR condo; this well-designed unit is efficiently laid out to maximize the use of space. Floor-to-ceiling windows fill the space with natural light, while the spacious lanai offers sparkling ocean & city skyline views. With Miele appliances that blend seamlessly with custom cabinetry & wood flooring, creating a luxurious living space. Other impeccable designed features include custom electric blackout window treatments, Large walk-in shower, dual vanity countertop, large closets, washer & dryer laundry, covered parking & central AC. Many amazing amenities await you here, including large lap pool, spacious fully equipped fitness center, poolside cabanas, barbbq, Children's playground, quest suites, dog park, grand room, and many other areas to relax & entertain guests. Ko'ula features direct access to the exciting retail, restaurants & entertainment that Ward Village has to offer. Convenient walking distance to Whole Food store. Ala Moana Beach Park & Mall are all nearby. This unit is move-in ready with stylish furniture included. Great opportunity to be in this award-winning building. **Region:** Metro **Neighborhood:** Kakaako **Condition:** Excellent **Parking:** Assigned **Total Parking:** 1 **View:** City, Coastline, Garden, Mountain, Ocean **Frontage:** **Pool:** **Zoning:** Kak - Kakaako Community Development Project **Sale Conditions:** None **Schools:** , , \* [Request Showing](#), [Photos](#), [History](#), [Maps](#), [Deed](#), [Watch List](#), [Tax Info](#)

DOM = Days on Market, Occ. = Occupancy, FL = Floor Number