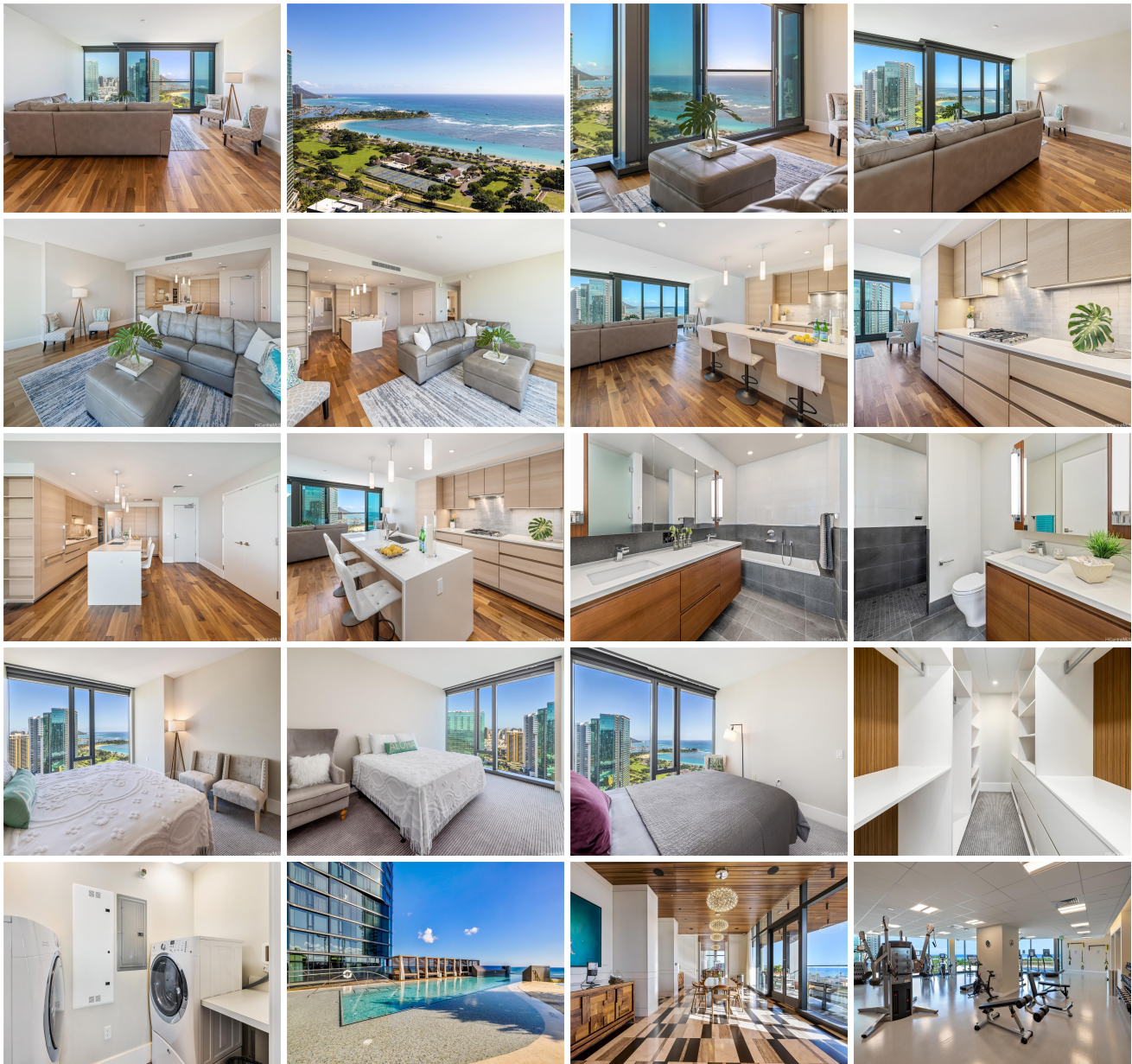


Anaha - 1108 Auahi 1108 Auahi Street Unit 3006, Honolulu 96814 * Anaha - 1108 Auahi *

\$2,300,000

Beds: 2	MLS#: <u>202400920</u>, FS	Year Built: 2017
Bath: 2/0	Status: Active	Remodeled:
Living Sq. Ft.: 1,244	List Date & DOM: 01-26-2024 & 102	Total Parking: 2
Land Sq. Ft.: 0	Condition: Excellent	Assessed Value
Lanai Sq. Ft.: 0	Frontage: Other	Building: \$1,724,500
Sq. Ft. Other: 0	Tax/Year: \$1,080/2023	Land: \$61,600
Total Sq. Ft. 1,244	Neighborhood: Kakaako	Total: \$1,786,100
Maint./Assoc. \$1,984 / \$0	Flood Zone : Zone AE - Tool	Stories / CPR: 21+ / No
Parking: Assigned, Covered - 2, Guest, Secured Entry	Frontage: Other	
Zoning : Kak - Kakaako Community Development Project	View: City, Diamond Head, Mountain, Ocean	

Public Remarks: Enjoy luxury living in Kakaako. This contemporary and spacious 2 bedroom, 2 bathroom, 2 parking unit features 9-foot ceilings, floor-to-ceiling windows for panoramic views of the Diamond Head, Ala Moana Beach Park, and Ocean, top-of-the-line appliances and an open concept living and dining area. Experience Island living with resort-like amenities including the famous glass-bottom pool, tennis courts, BBQ Pavilions, a movie theater, private dining rooms, a dog park, and more. Full concierge service and 6 guest suites for visiting friends and family. Conveniently located across the street from Whole Foods and a short distance from restaurants, shopping, Ala Moana Beach Park, and much more! **Sale Conditions:** None **Schools:** , , * [Request Showing](#), [Photos](#), [History](#), [Maps](#), [Deed](#), [Watch List](#), [Tax Info](#)





Address	Price	Bd & Bth	Living / Avg.	Land Avg.	Lanai	Occ.	FL	DOM
1108 Auahi Street 3006	\$2,300,000	2 & 2/0	1,244 \$1,849	0 \$inf	0	69%	30	102

Address	Tax Maint. Ass.	Assessed Land	Assessed Building	Assessed Total	Ratio	Year & Remodeled
1108 Auahi Street 3006	\$1,080 \$1,984 \$0	\$61,600	\$1,724,500	\$1,786,100	129%	2017 & NA

[1108 Auahi Street 3006](#) - MLS#: [202400920](#) - Enjoy luxury living in Kakaako. This contemporary and spacious 2 bedroom, 2 bathroom, 2 parking unit features 9-foot ceilings, floor-to-ceiling windows for panoramic views of the Diamond Head, Ala Moana Beach Park, and Ocean, top-of-the-line appliances and an open concept living and dining area. Experience Island living with resort-like amenities including the famous glass-bottom pool, tennis courts, BBQ Pavilions, a movie theater, private dining rooms, a dog park, and more. Full concierge service and 6 guest suites for visiting friends and family. Conveniently located across the street from Whole Foods and a short distance from restaurants, shopping, Ala Moana Beach Park, and much more! **Region:** Metro **Neighborhood:** Kakaako **Condition:** Excellent **Parking:** Assigned, Covered - 2, Guest, Secured Entry **Total Parking:** 2 **View:** City, Diamond Head, Mountain, Ocean **Frontage:** Other **Pool:** **Zoning:** Kak - Kakaako Community Development Project **Sale Conditions:** None **Schools:** , , * [Request Showing](#), [Photos](#), [History](#), [Maps](#), [Deed](#), [Watch List](#), [Tax Info](#)

DOM = Days on Market, Occ. = Occupancy, FL = Floor Number