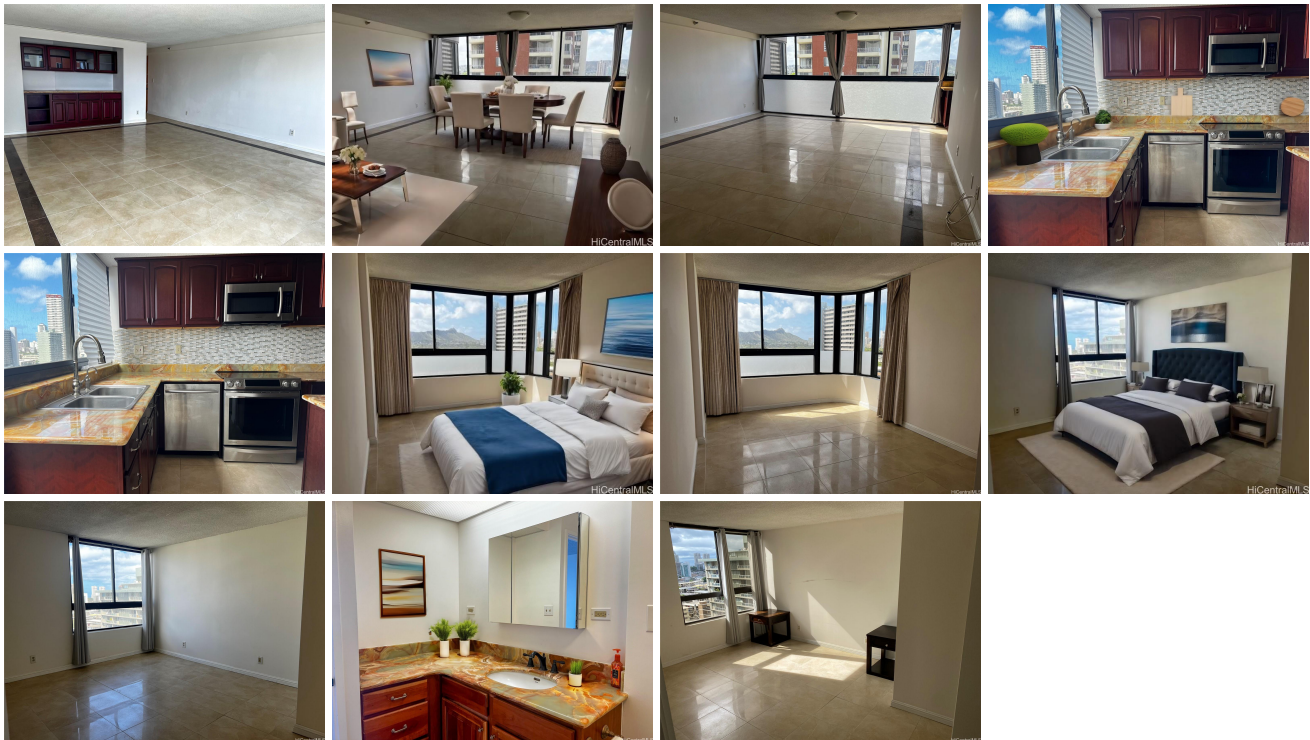


Kings Gate 2724 Kahoaloha Lane Unit 1406, Honolulu 96826 * Kings Gate * \$595,000 *

Originally \$610,000

Beds: 2	MLS#: 202400944, FS	Year Built: 1981
Bath: 2/0	Status: Active	Remodeled:
Living Sq. Ft.: 1,049	List Date & DOM: 01-19-2024 & 114	Total Parking: 2
Land Sq. Ft.: 32,844	Condition: Excellent, Above Average	Assessed Value
Lanai Sq. Ft.: 0	Frontage:	Building: \$528,700
Sq. Ft. Other: 0	Tax/Year: \$140/2023	Land: \$50,100
Total Sq. Ft. 1,049	Neighborhood: Moiliili	Total: \$578,800
Maint./Assoc. \$1,033 / \$0	Flood Zone : Zone X - Tool	Stories / CPR: 21+ / No
Parking: Assigned, Open - 2, Tandem	Frontage:	
Zoning : 12 - A-2 Medium Density Apartme	View: Cemetery, City, Diamond Head, Sunrise	

Public Remarks: BACK ON THE MARKET!!! Here's your chance to view this beautiful unit. Welcome to this Diamond Head view of a spacious 2 bedroom 2 bath unit with 2 parking spaces (tandem). Washer and dryer in the unit for your hassle free laundry day. For your added safety and peace of mind, the unit is equipped with a fire sprinkler system as well as an on site resident manager for your convenience. It's LOCATION LOCATION LOCATION with this unit! Close to freeway on and off ramps, University of Hawaii in the near vicinity and a range of diverse restaurants close by to whet your appetite, Hurry and make arrangements to see this unit.(photos have been virtually staged and enhanced) **Sale Conditions:** None **Schools:** , , * [Request Showing](#), [Photos](#), [History](#), [Maps](#), [Deed](#), [Watch List](#), [Tax Info](#)



Address	Price	Bd & Bth	Living / Avg.	Land Avg.	Lanai	Occ.	FL	DOM
2724 Kahoaloha Lane 1406	\$595,000	2 & 2/0	1,049 \$567	32,844 \$18	0	55%	14	114

Address	Tax Maint. Ass.	Assessed Land	Assessed Building	Assessed Total	Ratio	Year & Remodeled
2724 Kahoaloha Lane 1406	\$140 \$1,033 \$0	\$50,100	\$528,700	\$578,800	103%	1981 & NA

[2724 Kahoaloha Lane 1406](#) - MLS#: [202400944](#) - Original price was \$610,000 - BACK ON THE MARKET!!! Here's your chance to view this beautiful unit. Welcome to this Diamond Head view of a spacious 2 bedroom 2 bath unit with 2 parking spaces (tandem). Washer and dryer in the unit for your hassle free laundry day. For your added safety and peace of mind, the unit is equipped with a fire sprinkler system as well as an on site resident manager for your convenience. It's LOCATION LOCATION LOCATION with this unit! Close to freeway on and off ramps, University of Hawaii in the near vicinity and a range of diverse restaurants close by to whet your appetite, Hurry and make arrangements to see this unit.(photos have been virtually staged and enhanced) **Region:** Metro **Neighborhood:** Moiliili **Condition:** Excellent, Above Average **Parking:** Assigned, Open - 2, Tandem **Total Parking:** 2 **View:** Cemetery, City, Diamond Head, Sunrise **Frontage:** Pool: **Zoning:** 12 - A-2 Medium Density Apartme **Sale Conditions:** None **Schools:** , , * [Request Showing](#), [Photos](#), [History](#), [Maps](#), [Deed](#), [Watch List](#), [Tax Info](#)

DOM = Days on Market, Occ. = Occupancy, FL = Floor Number