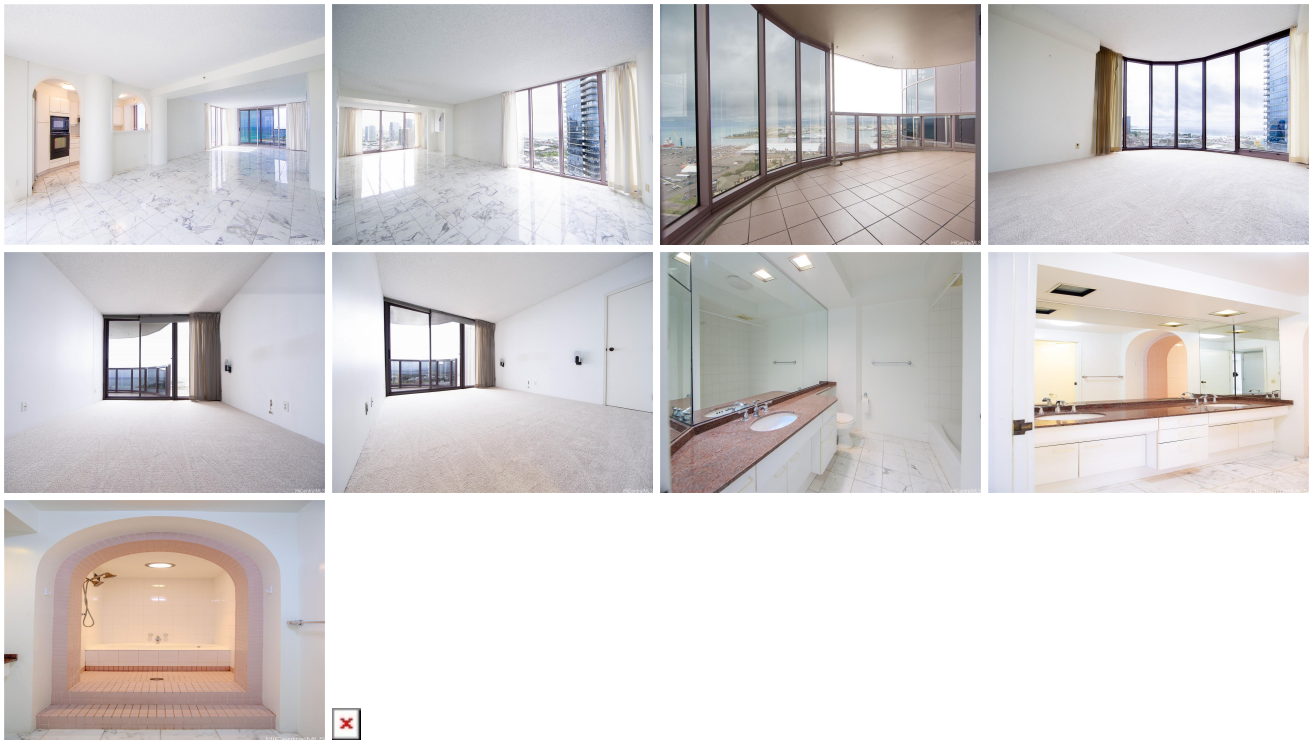


One Waterfront Tower 415 South Street Unit 2701, Honolulu 96813 * One Waterfront Tower * \$1,000,000

Beds: 2	MLS#: 202400961, FS	Year Built: 1989
Bath: 2/0	Status: Active	Remodeled:
Living Sq. Ft.: 1,470	List Date & DOM: 01-17-2024 & 118	Total Parking: 2
Land Sq. Ft.: 106,548	Condition: Average	Assessed Value
Lanai Sq. Ft.: 155	Frontage: Other	Building: \$813,800
Sq. Ft. Other: 0	Tax/Year: \$264/2023	Land: \$92,300
Total Sq. Ft. 1,625	Neighborhood: Kakaako	Total: \$906,100
Maint./Assoc. \$837 / \$0	Flood Zone : Zone X - Tool	Stories / CPR: 21+ / No
Parking: Covered - 2, Garage, Secured Entry	Frontage: Other	
Zoning : KA - State jurisdiction, refer	View: City, Coastline, Diamond Head, Ocean	

Public Remarks: Panoramic ocean, city, mountain and coastline views from the highly desirable Makai Tower at One Waterfront Towers. Corner end, two bedrooms, two bathrooms, and two secured covered parking stalls. Conveniently located to both Downtown Honolulu and Kaka'ako with a variety of restaurants and shopping options just steps away. Amenities include BBQ area, newly renovated heated pool and Jacuzzi spa, sauna, exercise facilities along with 24-hour security. **Sale Conditions:** None **Schools:** [Royal](#), [Keelikolani](#), [Mckinley](#) * [Request Showing](#), [Photos](#), [History](#), [Maps](#), [Deed](#), [Watch List](#), [Tax Info](#)



Address	Price	Bd & Bth	Living / Avg.	Land Avg.	Lanai	Occ.	FL	DOM
415 South Street 2701	\$1,000,000	2 & 2/0	1,470 \$680	106,548 \$9	155	58%	27	118

Address	Tax Maint. Ass.	Assessed Land	Assessed Building	Assessed Total	Ratio	Year & Remodeled
415 South Street 2701	\$264 \$837 \$0	\$92,300	\$813,800	\$906,100	110%	1989 & NA

[415 South Street 2701](#) - MLS#: [202400961](#) - Panoramic ocean, city, mountain and coastline views from the highly desirable Makai Tower at One Waterfront Towers. Corner end, two bedrooms, two bathrooms, and two secured covered parking stalls. Conveniently located to both Downtown Honolulu and Kaka'ako with a variety of restaurants and shopping options just steps away. Amenities include BBQ area, newly renovated heated pool and Jacuzzi spa, sauna, exercise facilities along with 24-hour security. **Region:** Metro **Neighborhood:** Kakaako **Condition:** Average **Parking:** Covered - 2, Garage, Secured Entry **Total Parking:** 2 **View:** City, Coastline, Diamond Head, Ocean **Frontage:** Other **Pool:** **Zoning:** KA - State jurisdiction, refer **Sale Conditions:** None **Schools:** [Royal](#), [Keelikolani](#), [Mckinley](#) * [Request Showing](#), [Photos](#), [History](#), [Maps](#), [Deed](#), [Watch List](#), [Tax Info](#)

DOM = Days on Market, Occ. = Occupancy, FL = Floor Number