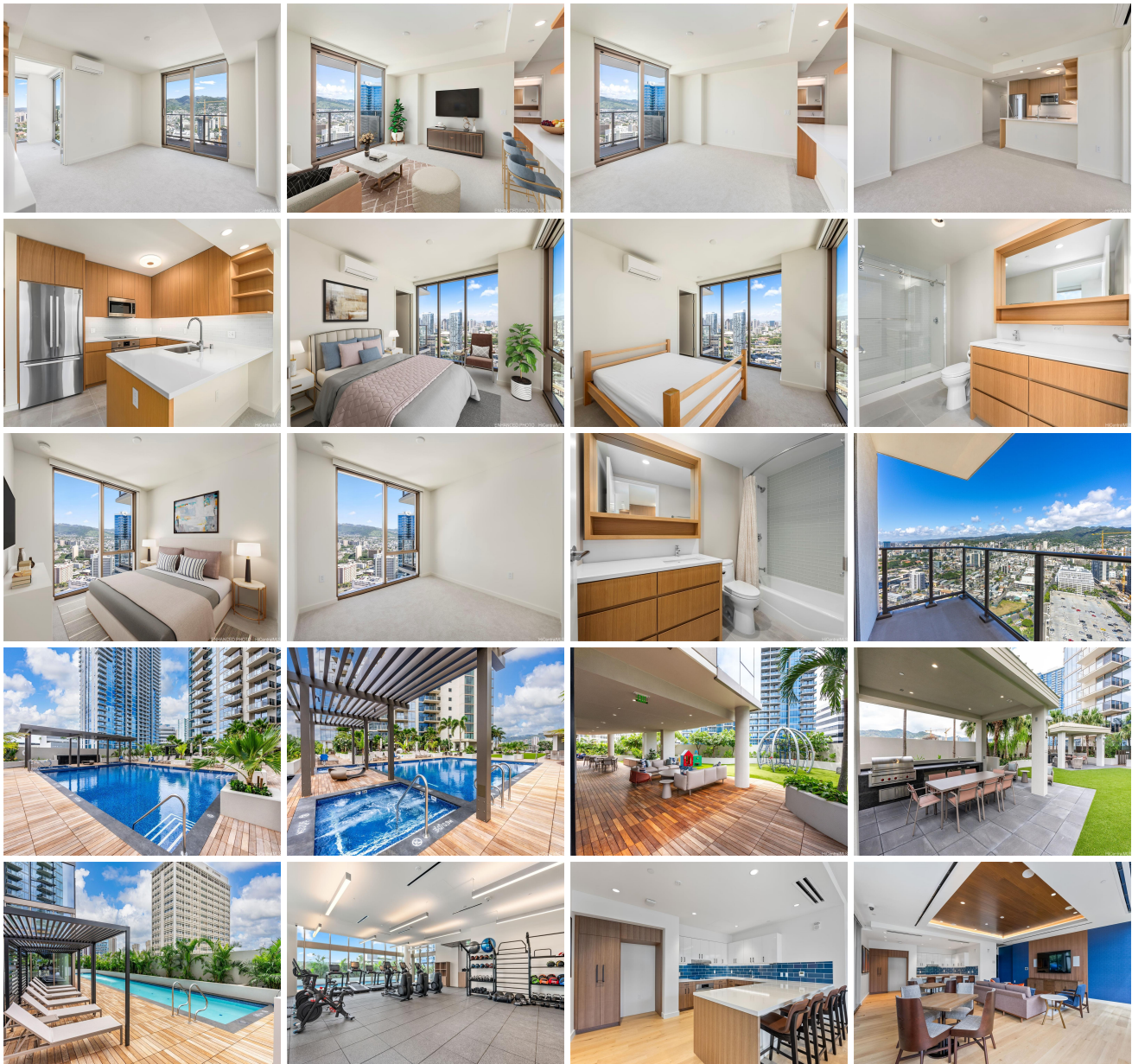


**Sky Ala Moana West 1388 Kapiolani Boulevard Unit 3511, Honolulu 96814 \* Sky Ala Moana West \* \$1,070,000 \* Originally \$1,080,000**

Beds: <b>2</b>	MLS#: <b><u>202401282</u>, FS</b>	Year Built: <b>2021</b>
Bath: <b>2/0</b>	Status: <b>Active</b>	Remodeled:
Living Sq. Ft.: <b>801</b>	List Date & DOM: <b>01-26-2024 &amp; 111</b>	Total Parking: <b>2</b>
Land Sq. Ft.: <b>0</b>	Condition: <b>Excellent</b>	<a href="#">Assessed Value</a>
Lanai Sq. Ft.: <b>82</b>	Frontage:	Building: <b>\$919,300</b>
Sq. Ft. Other: <b>0</b>	Tax/Year: <b>\$97/2024</b>	Land: <b>\$55,000</b>
Total Sq. Ft. <b>883</b>	Neighborhood: <b>Holiday Mart</b>	Total: <b>\$974,300</b>
Maint./Assoc. <b>\$1,051 / \$0</b>	<a href="#">Flood Zone</a> : <b>Zone X - Tool</b>	Stories / CPR: / No
Parking: <b>Assigned, Covered - 2, Guest, Street</b>	Frontage:	
<a href="#">Zoning</a> : <b>33 - BMX-3 Community Business M</b>	View: <b>City, Mountain, Ocean</b>	

**Public Remarks:** NEVER BEEN LIVED IN! Captivating city and mountain views await you from this immaculate 2 bdrm/2 bath/2 covered pkg HIGH FLOOR CORNER unit in highly desirable Sky Ala Moana West. This unit features floor-to-ceiling windows to soak in the amazing views, beautiful quartz countertops, and an open kitchen with stainless steel Bosch appliances. Embrace island living in the heart of the city where you can enjoy spectacular amenities such as a pool & whirlpool spa, fitness center, BBQ area, cabanas, party room and much more! Ideally located near Ala Moana Beach Park and directly across from world-renowned Ala Moana Center with an abundance of shopping, restaurants and entertainment. For even more shopping and restaurant options, Ward Village is just minutes away. Don't miss this fantastic opportunity! A few photos have been virtually staged (enhanced). **Sale Conditions:** None **Schools:** [Kaahumanu](#), [Stevenson](#), [Mckinley](#) \* [Request Showing](#), [Photos](#), [History](#), [Maps](#), [Deed](#), [Watch List](#), [Tax Info](#)





Address	Price	Bd & Bth	Living / Avg.	Land   Avg.	Lanai	Occ.	FL	DOM
<a href="#">1388 Kapiolani Boulevard 3511</a>	<b>\$1,070,000</b>	2 & 2/0	801   \$1,336	0   \$inf	82	0%	3	111

Address	Tax   Maint.   Ass.	Assessed Land	Assessed Building	Assessed Total	Ratio	Year & Remodeled
<a href="#">1388 Kapiolani Boulevard 3511</a>	\$97   \$1,051   \$0	\$55,000	\$919,300	\$974,300	110%	2021 & NA

[1388 Kapiolani Boulevard 3511](#) - MLS#: [202401282](#) - Original price was \$1,080,000 - NEVER BEEN LIVED IN! Captivating city and mountain views await you from this immaculate 2 bdrm/2 bath/2 covered pkg HIGH FLOOR CORNER unit in highly desirable Sky Ala Moana West. This unit features floor-to-ceiling windows to soak in the amazing views, beautiful quartz countertops, and an open kitchen with stainless steel Bosch appliances. Embrace island living in the heart of the city where you can enjoy spectacular amenities such as a pool & whirlpool spa, fitness center, BBQ area, cabanas, party room and much more! Ideally located near Ala Moana Beach Park and directly across from world-renowned Ala Moana Center with an abundance of shopping, restaurants and entertainment. For even more shopping and restaurant options, Ward Village is just minutes away. Don't miss this fantastic opportunity! A few photos have been virtually staged (enhanced). **Region:** Metro **Neighborhood:** Holiday Mart **Condition:** Excellent **Parking:** Assigned, Covered - 2, Guest, Street **Total Parking:** 2 **View:** City, Mountain, Ocean **Frontage:** **Pool:** **Zoning:** 33 - BMX-3 Community Business M **Sale Conditions:** None **Schools:** [Kaahumanu](#), [Stevenson](#), [Mckinley](#) \* [Request Showing](#), [Photos](#), [History](#), [Maps](#), [Deed](#), [Watch List](#), [Tax Info](#)

DOM = Days on Market, Occ. = Occupancy, FL = Floor Number