

Crosspointe 500 Mananai Place Unit 17R, Honolulu 96818 * Crosspointe * \$520,000

Beds: **2**

MLS#: **202401291, FS**

Year Built: **1985**

Bath: **1/0**

Status: **Active Under Contract**

Remodeled:

Living Sq. Ft.: **813**

List Date & DOM: **01-22-2024 & 63**

Total Parking: **1**

Land Sq. Ft.: **100,536**

Condition: **Above Average, Average**

[Assessed Value](#)

Lanai Sq. Ft.: **100**

Frontage:

Building: **\$296,500**

Sq. Ft. Other: **0**

Tax/Year: **\$154/2023**

Land: **\$235,200**

Total Sq. Ft. **913**

Neighborhood: **Halawa**

Total: **\$531,700**

Maint./Assoc. **\$232 / \$363**

[Flood Zone](#): **Zone D - Tool**

Stories / CPR: **One / No**

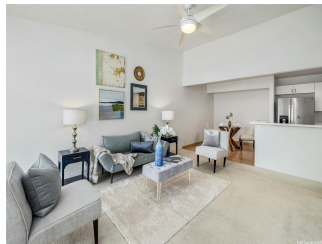
Parking: **Assigned, Guest, Open - 1, Other**

Frontage:

[Zoning](#): **11 - A-1 Low Density Apartment**

View: **City, Mountain**

Public Remarks: Charming 2-bed, 1-bath condo in a vibrant community. Thoughtfully designed layout with an open, spacious living and dining area that blends into the kitchen effortlessly. The unit features a generously sized primary bedroom with a walk-in closet, additional vanity, and extra storage. Relax on the spacious private balcony patio, perfect for entertaining. In-unit laundry and an assigned parking space add convenience. Experience gated community living with a pool, recreation area, BBQ, and Club House. Enjoy a host of amenities, shopping, dining, and parks within arm's reach. Centrally located, nestled between all major highways, adjacent to Kahuapaani Street, and close to military bases. Ideal for first-time buyers, downsizers, or investors seeking a comfortable home in a desirable neighborhood. Your gateway to a charming and convenient lifestyle awaits. **Sale Conditions:** None **Schools:** , , * [Request Showing](#), [Photos](#), [History](#), [Maps](#), [Deed](#), [Watch List](#), [Tax Info](#)





Address	Price	Bd & Bth	Living / Avg.	Land Avg.	Lanai	Occ.	FL	DOM
500 Mananai Place 17R	\$520,000	2 & 1/0	813 \$640	100,536 \$5	100	47%	2	63

Address	Tax Maint. Ass.	Assessed Land	Assessed Building	Assessed Total	Ratio	Year & Remodeled
500 Mananai Place 17R	\$154 \$232 \$363	\$235,200	\$296,500	\$531,700	98%	1985 & NA

[500 Mananai Place 17R](#) - MLS#: [202401291](#) - Charming 2-bed, 1-bath condo in a vibrant community. Thoughtfully designed layout with an open, spacious living and dining area that blends into the kitchen effortlessly. The unit features a generously sized primary bedroom with a walk-in closet, additional vanity, and extra storage. Relax on the spacious private balcony patio, perfect for entertaining. In-unit laundry and an assigned parking space add convenience. Experience gated community living with a pool, recreation area, BBQ, and Club House. Enjoy a host of amenities, shopping, dining, and parks within arm's reach. Centrally located, nestled between all major highways, adjacent to Kahuapaani Street, and close to military bases. Ideal for first-time buyers, downsizers, or investors seeking a comfortable home in a desirable neighborhood. Your gateway to a charming and convenient lifestyle awaits. **Region:** Pearl City **Neighborhood:** Halawa **Condition:** Above Average, Average **Parking:** Assigned, Guest, Open - 1, Other **Total Parking:** 1 **View:** City, Mountain **Frontage:** **Pool:** **Zoning:** 11 - A-1 Low Density Apartment **Sale Conditions:** None **Schools:** , , * [Request Showing](#), [Photos](#), [History](#), [Maps](#), [Deed](#), [Watch List](#), [Tax Info](#)

DOM = Days on Market, Occ. = Occupancy, FL = Floor Number