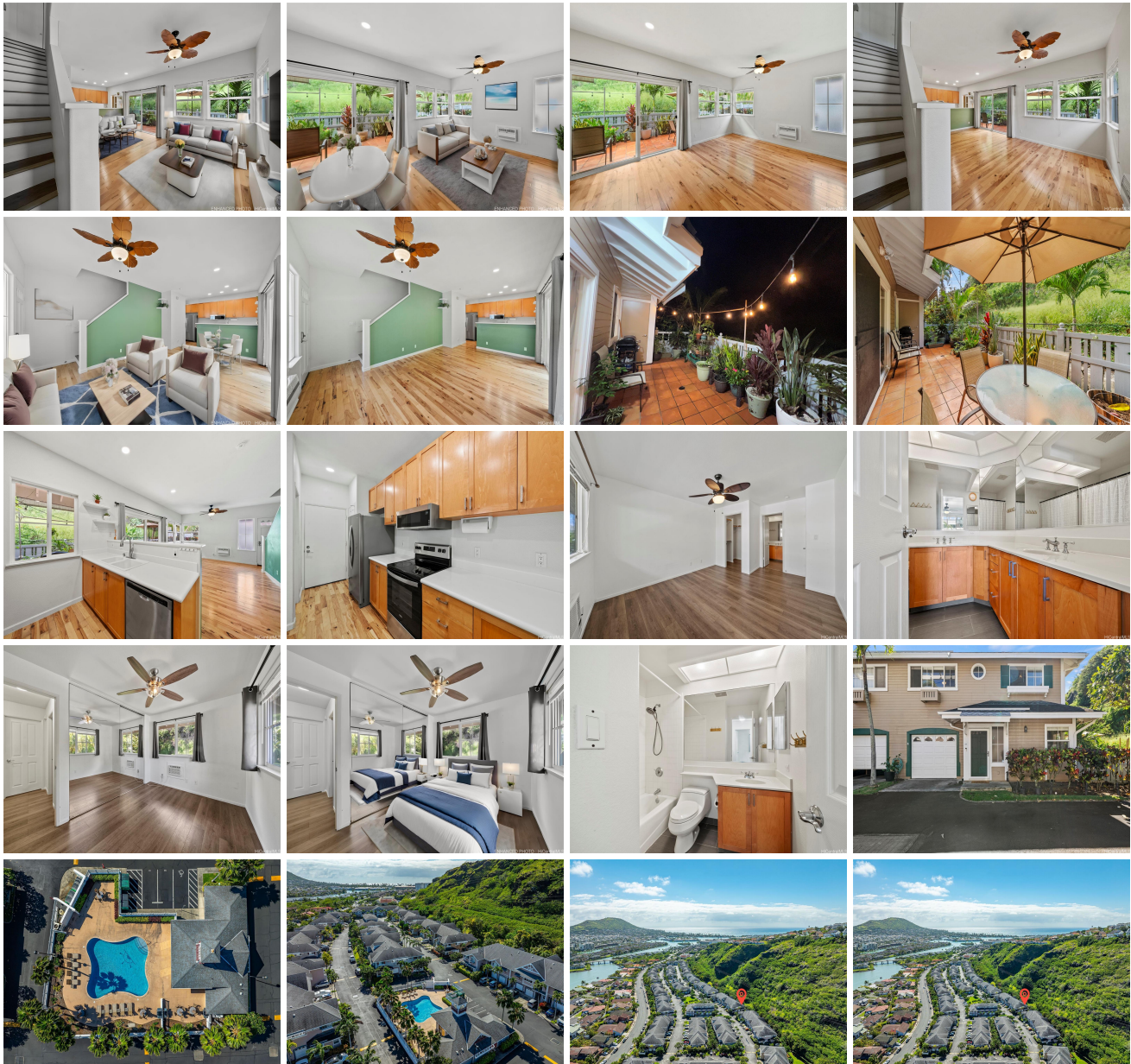


Lalea At Hawaii Kai 2 7130 Hawaii Kai Drive Unit 119, Honolulu 96825 * Lalea At Hawaii Kai

2 * \$960,000 * Originally \$1,059,900

Beds: 3	MLS#: <u>202401301</u>, FS	Year Built: 1997
Bath: 2/1	Status: Active Under Contract	Remodeled:
Living Sq. Ft.: 1,075	List Date & DOM: 01-23-2024 & 106	Total Parking: 2
Land Sq. Ft.: 0	Condition: Excellent, Above Average	Assessed Value
Lanai Sq. Ft.: 250	Frontage: Other	Building: \$0
Sq. Ft. Other: 0	Tax/Year: \$240/2023	Land: \$677,000
Total Sq. Ft. 1,325	Neighborhood: West Marina	Total: \$822,900
Maint./Assoc. \$476 / \$0	Flood Zone : Zone D - Tool	Stories / CPR: Two / No
Parking: Assigned, Garage, Guest	Frontage: Other	
Zoning : 12 - A-2 Medium Density Apartme	View: Garden, Mountain	

Public Remarks: Rarely available 3-bedroom, 2.5-bath, spacious two-story townhome that is MOVE-IN READY in Lalea at Hawaii Kai 2! Enjoy a quiet & lovely corner-end exceptional unit with a spacious living room, well-maintained open concept kitchen, large closets, A/C, additional storage, and a one-car attached garage w/1 available assigned parking stall nearby. Large private Lanai surrounded by flowers, plants, and singing birds perfect for enjoying your morning coffee with nature or having a large gathering of friends for pau hana. This end unit is next to the Mauka and has the feeling you are living in a Single Family Home. Lalea is a wonderful community with LOW MAINTENANCE FEES, excellent amenities, and lots of guest parking. PET FRIENDLY. Conveniently located to access shopping centers, Costco, Marina, restaurants, movie theater, schools, post office, and parks. Lalea has the best Halloween every year, fun for all!! Sold As-Is. **Sale Conditions:** None **Schools:** , , * [Request Showing](#), [Photos](#), [History](#), [Maps](#), [Deed](#), [Watch List](#), [Tax Info](#)



Address	Price	Bd & Bth	Living / Avg.	Land Avg.	Lanai	Occ.	FL	DOM
7130 Hawaii Kai Drive 119	\$960,000	3 & 2/1	1,075 \$893	0 \$inf	250	69%	1	106

Address	Tax Maint. Ass.	Assessed Land	Assessed Building	Assessed Total	Ratio	Year & Remodeled
7130 Hawaii Kai Drive 119	\$240 \$476 \$0	\$677,000	\$0	\$822,900	117%	1997 & NA

[7130 Hawaii Kai Drive 119](#) - MLS#: [202401301](#) - Original price was \$1,059,900 - Rarely available 3-bedroom, 2.5-bath, spacious two-story townhome that is MOVE-IN READY in Laea at Hawaii Kai 2! Enjoy a quiet & lovely corner-end exceptional unit with a spacious living room, well-maintained open concept kitchen, large closets, A/C, additional storage, and a one-car attached garage w/1 available assigned parking stall nearby. Large private Lanai surrounded by flowers, plants, and singing birds perfect for enjoying your morning coffee with nature or having a large gathering of friends for pau hana. This end unit is next to the Mauka and has the feeling you are living in a Single Family Home. Laea is a wonderful community with LOW MAINTENANCE FEES, excellent amenities, and lots of guest parking. PET FRIENDLY. Conveniently located to access shopping centers, Costco, Marina, restaurants, movie theater, schools, post office, and parks. Laea has the best Halloween every year, fun for all!! Sold As-Is. **Region:** Hawaii Kai **Neighborhood:** West Marina **Condition:** Excellent, Above Average **Parking:** Assigned, Garage, Guest **Total Parking:** 2 **View:** Garden, Mountain **Frontage:** Other **Pool:** **Zoning:** 12 - A-2 Medium Density Apartme **Sale Conditions:** None **Schools:** , , * [Request Showing](#), [Photos](#), [History](#), [Maps](#), [Deed](#), [Watch List](#), [Tax Info](#)

DOM = Days on Market, Occ. = Occupancy, FL = Floor Number