

Waikiki Skyliner 2415 Ala Wai Boulevard Unit 1804, Honolulu 96815 * Waikiki Skyliner *

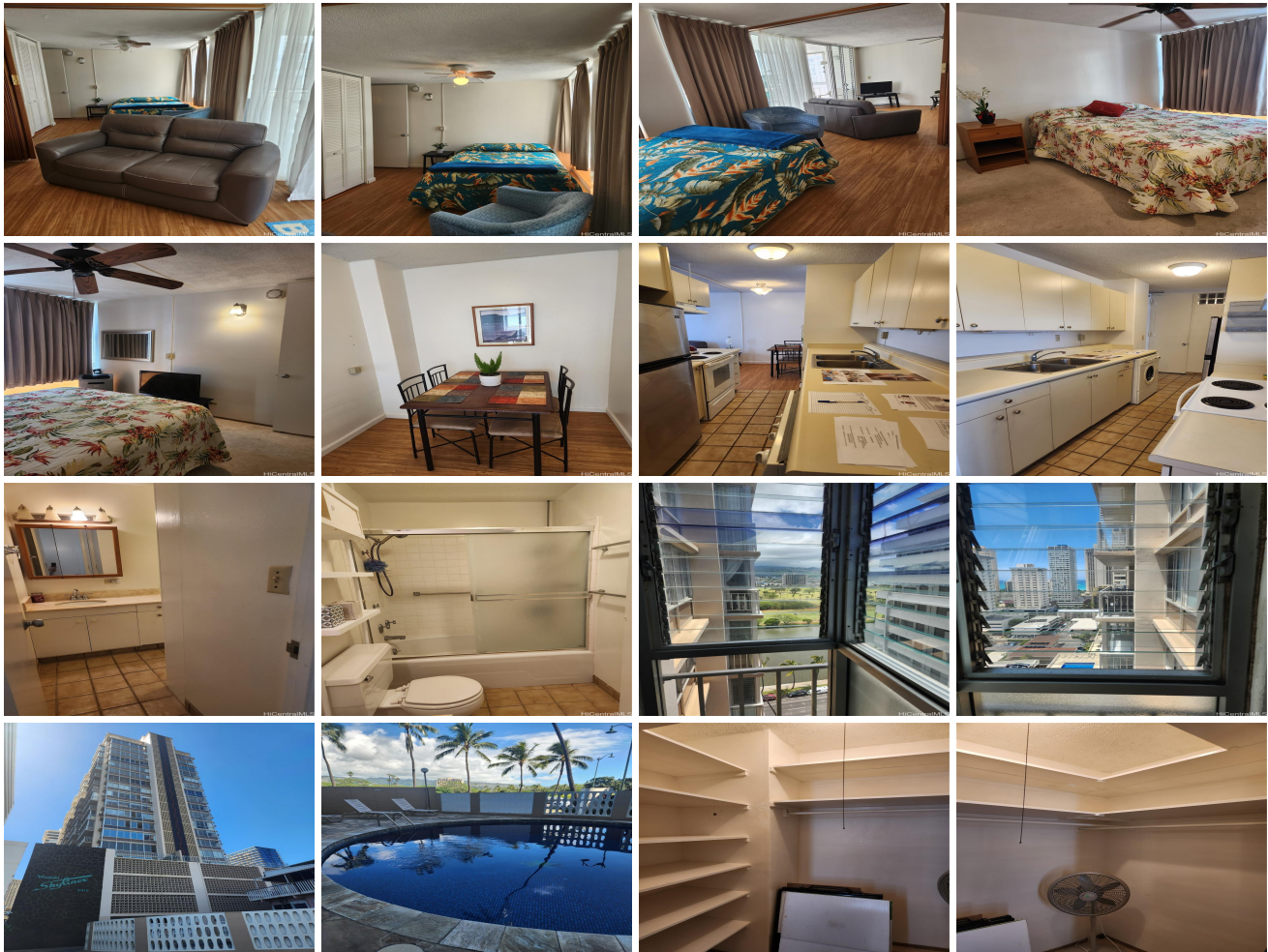
\$461,500 * Originally \$479,500

Beds: 2	MLS#: 202401331, FS	Year Built: 1968
Bath: 1/0	Status: Active	Remodeled: 2019
Living Sq. Ft.: 845	List Date & DOM: 01-22-2024 & 113	Total Parking: 1
Land Sq. Ft.: 20,691	Condition: Average	Assessed Value
Lanai Sq. Ft.: 0	Frontage: Golf Course, Stream/Canal	Building: \$435,700
Sq. Ft. Other: 0	Tax/Year: \$139/2024	Land: \$65,700
Total Sq. Ft. 845	Neighborhood: Waikiki	Total: \$501,400
Maint./Assoc. \$1,083 / \$0	Flood Zone : Zone AE - Tool	Stories / CPR: 15-20 / No
Parking: Assigned, Covered - 1, Secured Entry, Street	Frontage: Golf Course, Stream/Canal	

[Zoning](#): **X2 - Apartment Precinct**

View: **Golf Course, Marina/Canal, Mountain, Ocean, Sunrise, Sunset**

Public Remarks: Seller offering Buyer Interest BUYDOWN Program. Contact Lister for details. This is the only true 2-bedroom, 1-bath home for sale in Waikiki Skyliner, It is in the heart of Waikiki and is waiting for you to make it your own. Close to the University of Hawaii, the International Market Place, The Bus, and the New Target which is opening soon. Enjoy cool breezes on your enclosed lanai with views of Waikiki Beach, the Ala Wai Golf Course, and rainbows against the Ko'olau Mountains. Most everything you'll need is within easy walking distance. Convenient Parking Space close to lobby entrance. The parking garage has been updated with new security gates and cameras. A key fob is required to enter the gates, the building, and the elevators. Capital Improvement projects are ongoing to maintain the building. **Sale Conditions:** None
Schools: [Jefferson](#), [Washington](#), [Kaimuki](#) * [Request Showing](#), [Photos](#), [History](#), [Maps](#), [Deed](#), [Watch List](#), [Tax Info](#)



Address	Price	Bd & Bth	Living / Avg.	Land Avg.	Lanai	Occ.	FL	DOM
2415 Ala Wai Boulevard 1804	\$461,500	2 & 1/0	845 \$546	20,691 \$22	0	60%	18	113

Address	Tax Maint. Ass.	Assessed Land	Assessed Building	Assessed Total	Ratio	Year & Remodeled
2415 Ala Wai Boulevard 1804	\$139 \$1,083 \$0	\$65,700	\$435,700	\$501,400	92%	1968 & 2019

[2415 Ala Wai Boulevard 1804](#) - MLS#: [202401331](#) - Original price was \$479,500 - Seller offering Buyer Interest BUYDOWN Program. Contact Lister for details. This is the only true 2-bedroom, 1-bath home for sale in Waikiki Skyliner, It is in the heart of Waikiki and is waiting for you to make it your own. Close to the University of Hawaii, the International Market Place, The Bus, and the New Target which is opening soon. Enjoy cool breezes on your enclosed lanai with views of Waikiki Beach, the Ala Wai Golf Course, and rainbows against the Ko'olau Mountains. Most everything you'll need is within easy walking distance. Convenient Parking Space close to lobby entrance. The parking garage has been updated with new security gates and cameras. A key fob is required to enter the gates, the building, and the elevators. Capital Improvement projects are ongoing to maintain the building. **Region:** Metro **Neighborhood:** Waikiki **Condition:** Average **Parking:** Assigned, Covered - 1, Secured Entry, Street **Total Parking:** 1 **View:** Golf Course, Marina/Canal, Mountain, Ocean, Sunrise, Sunset **Frontage:** Golf Course, Stream/Canal **Pool:** **Zoning:** X2 - Apartment Precinct **Sale Conditions:** None **Schools:** [Jefferson](#), [Washington](#), [Kaimuki](#) * [Request Showing](#), [Photos](#), [History](#), [Maps](#), [Deed](#), [Watch List](#), [Tax Info](#)

DOM = Days on Market, Occ. = Occupancy, FL = Floor Number